



STATE OF LIBYA
MINISTRY OF TRANSPORTATION

دولة ليبيا
وزارة المواصلات

TEL/FAX: + 218 21 5632338
AFS: HLLLYNYN.
Email: ais@caa.gov.ly
Website: www.Caa.gov.ly/ais/

CIVIL AVIATION AUTHORITY
AIR NAVIGATION SERVICES DEPARTMENT
AERONAUTICAL INFORMATION SERVICE
(AIS)

AIRAC
AIP
Supplement 2/24
07 MAR 2024

Effective Date 18 APR 2024 0000 UTC

- AD2 HLLM

**NEW AND REVISED INSTRUMENT FLIGHT PROCEDURES AND CHARTS
FOR RWY 10/28 Of MITIGA INTERNATIONAL AERODROME**

1. DESCRIPTION:

Following Instrument Approach Charts are issued for Mitiga INTL Aerodrome

- 1.1 Instrument approach chart VOR/DME For RWY 10 AT Page 2
- 1.2 Instrument approach chart VOR/DME For RWY 28 AT Page 3
- 1.3 Instrument approach chart ILS Or LOC For RWY 28 AT Page 4

2. IMPLEMENTATION

2.1 This AIP Supplement and relevant charts will become effective on 18 APRIL 2024.

3. CANCELLATION

3.1 This AIP Supplement will remain current until the information is published in AIP LIBYA.

4. REVISION OF INSTRUMENT APPROACH PROCEDURES

The existing instrument approach procedures and charts are revised as follows:-

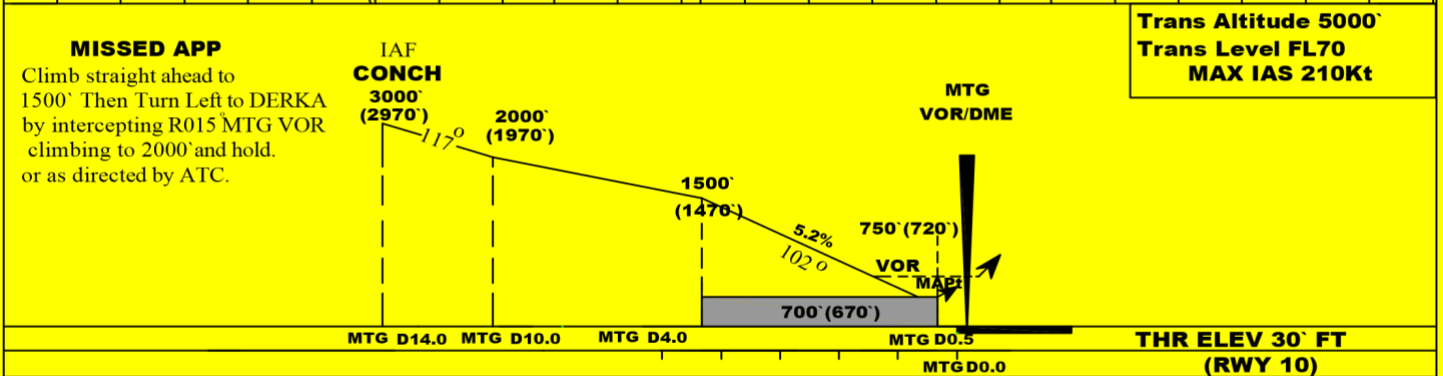
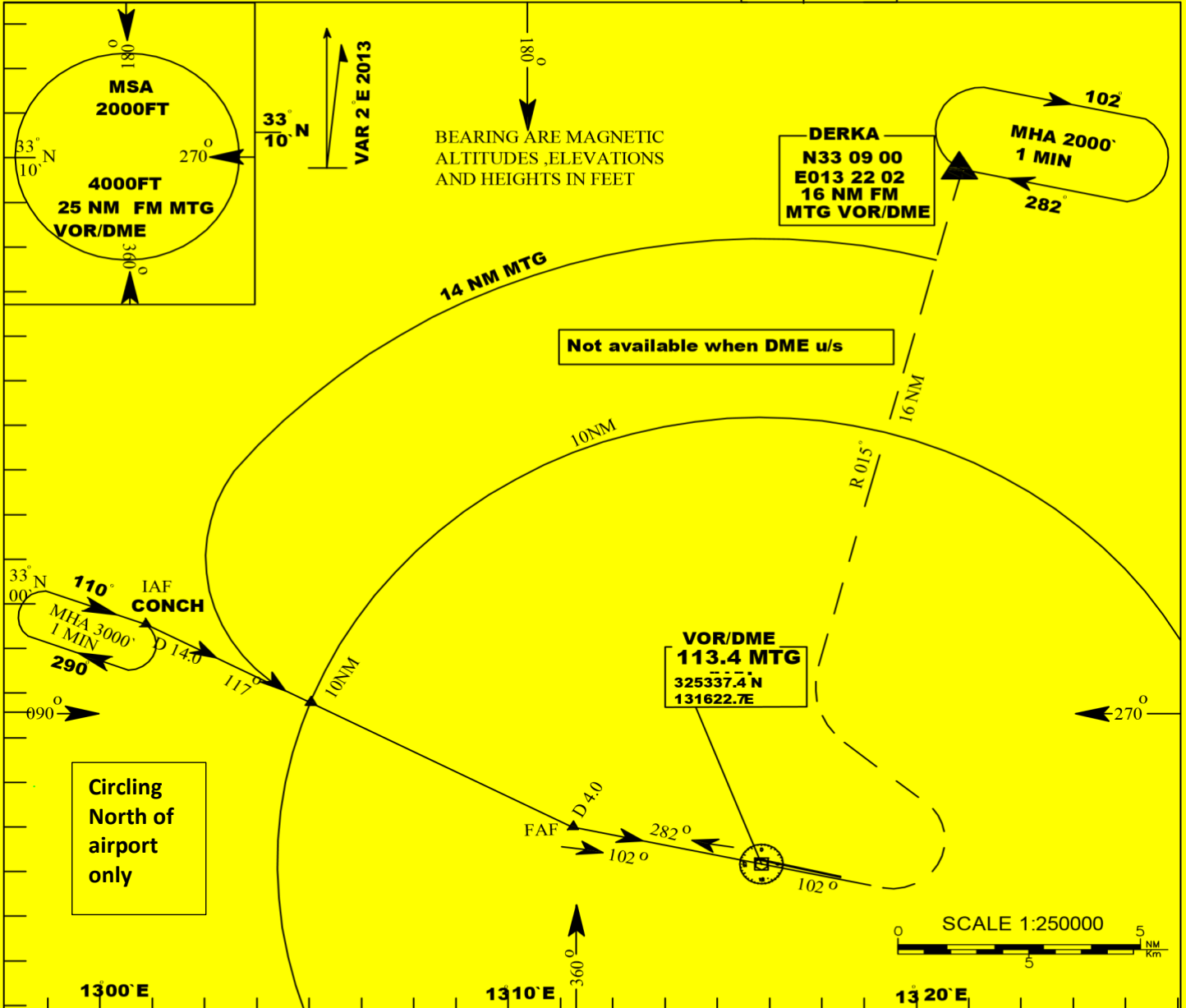
4.1 The following charts pertaining to MITIGA airport in AIP LIBYA are superseded Instrument Approach Charts on pages AD2 HLLM-9 , HLLM-11 AND HLLM-13 (dated 05 OCT 2023) of AIP Libya with the Instrument Approach Charts of this AIP Supplement.

INSTRUMENT APPROACH CHART-ICAO

**AERODROME ELEV 30FT
HEIGHTS RELATED TO
THR RWY 10 ELEV 30FT**

APP	124.000
TWR	126.300
GND	121.900

**TRIPOLI/LIBYA
MITIGA INTL
VOR/DME RWY 10**



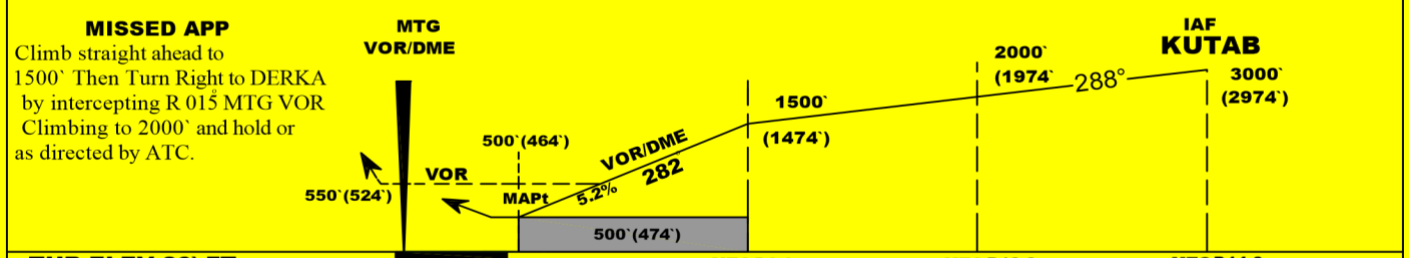
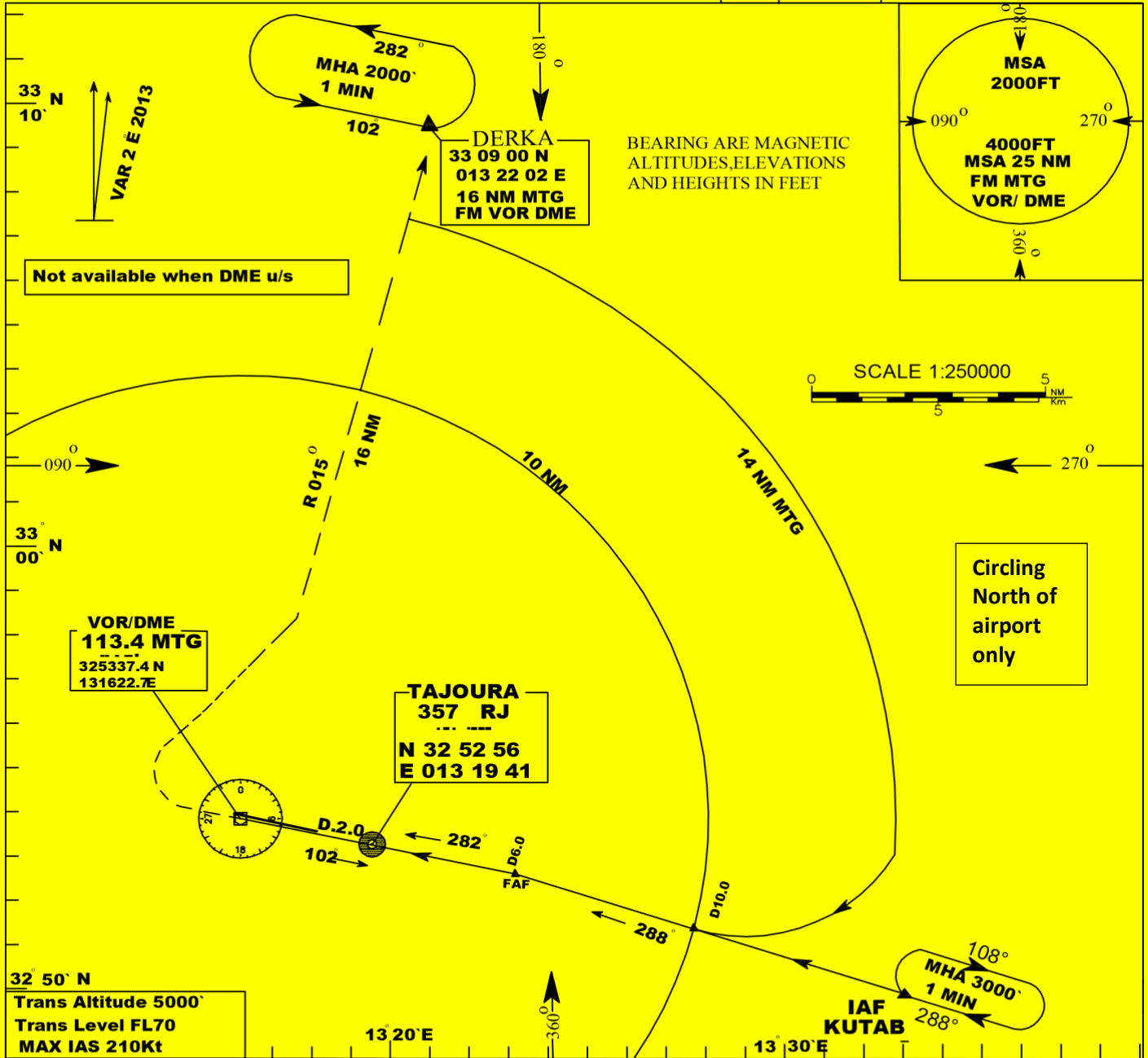
STRAIGHT-IN LANDING RWY 10					
	VOR/DME MDA (H) 700' (670')		VOR MDA (H) 750' (720')		CIRCLE TO LAND MDA (H) VIS(m)
	ALS OUT	ALS OUT	ALS OUT	ALS OUT	
A					1000(970') 1900 m
B	1200 m	1600 m	1600 m	2000 m	1000(970') 2800 m
C					1000(970') 3700 m
D	1600 m	2000 m	2000 m	2400 m	1000(970') 4600 m

INSTRUMENT APPROACH CHART-ICAO

**AERODROME ELEV 30FT
HEIGHTS RELATED TO
THR RWY 28**

APP	124.000
TWR	126.300
GND	121.900

**TRIPOLI/LIBYA
MITIGA INTL
VOR/DME RWY 28**



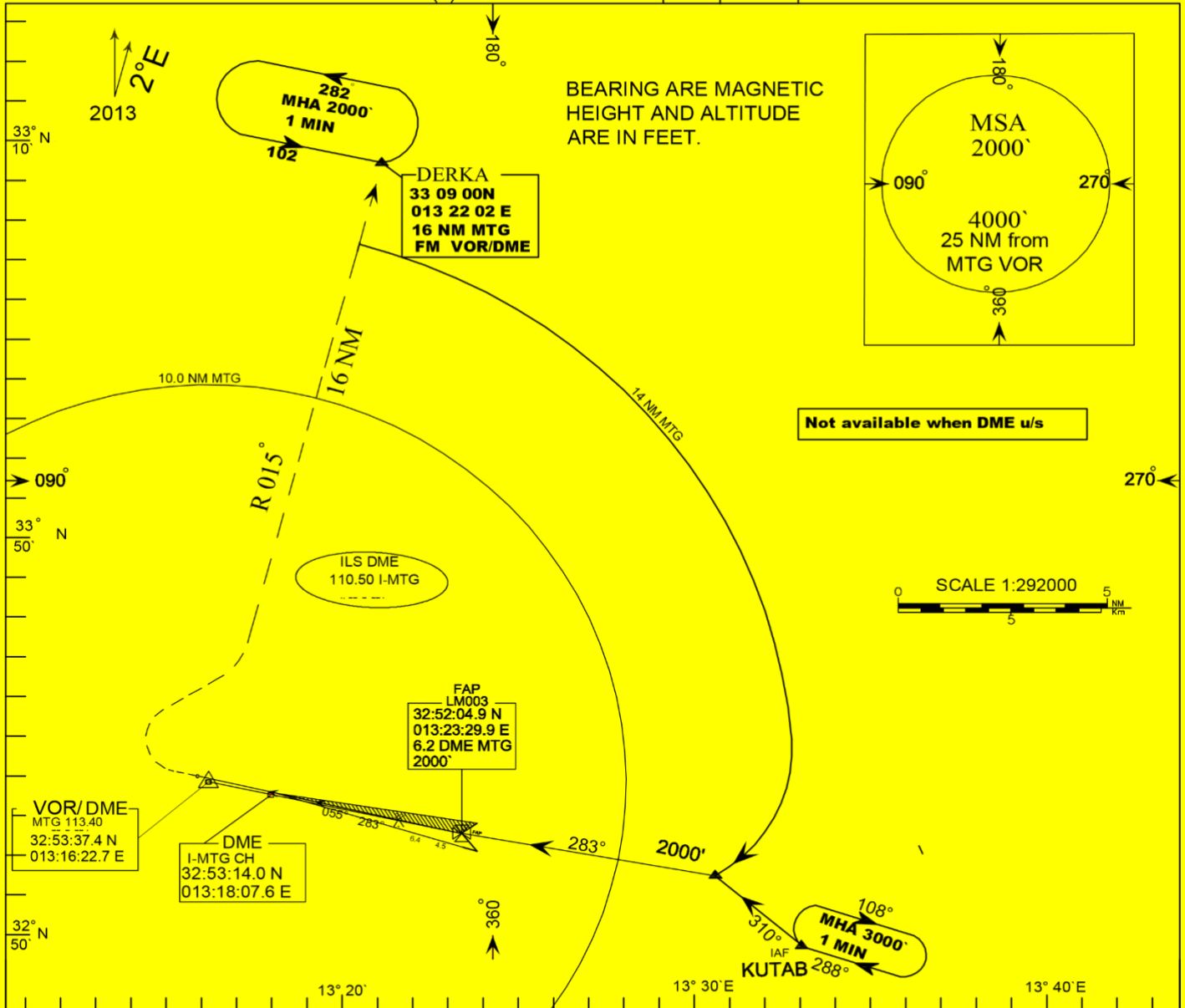
STRAIGHT-IN LANDING RWY 28					
	VOR/DME MDA (H) 500' (474')		VOR MDA (H) 550' (524')		CIRCLE TO LAND
	ALS OUT		ALS OUT		
A					MDA (H) 1000 (974') VIS(m) 1900 m
B	1200 m	1600 m	1600 m	2000 m	1000 (974') 2800 m
C					1000 (974') 3700 m
D	1600 m	2000 m	2000 m	2400 m	1000 (974') 4600 m

INSTRUMENT
APPROACH
CHART - ICAO

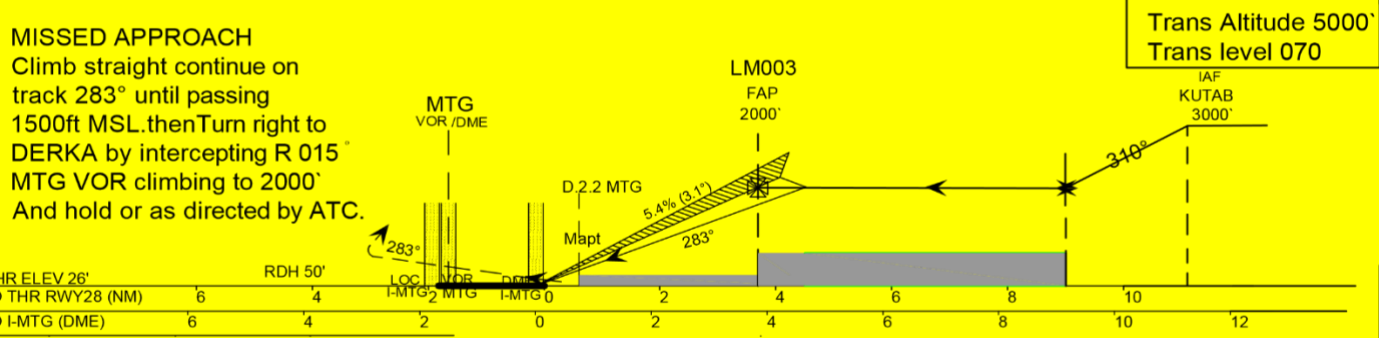
AD ELEV 30 (ft)
HEIGHTS RELATED TO
THR RWY28-ELEV 26(ft)

APP	124.000
TWR	126.300
GND	121.900

TRIPOLI /LIBYA
MITIGA IMTL
ILS or LOC RWY 28



MISSED APPROACH
Climb straight continue on track 283° until passing 1500ft MSL then Turn right to DERKA by intercepting R 015° MTG VOR climbing to 2000° And hold or as directed by ATC.



DA(H)	A	B	C	D
STRAIGHT IN CAT I	226` (200`)			
LOC ONLY	340` (310`)			
CIRCLING	1000 (970`)			
VIS (M)	1900M	2800M	3700M'	4600M

LIBYA C.A.A

AIRAC SUP 2/24 18 APR 2024