

**HLMS AD 2.1 AERODROME LOCATION INDICATOR AND NAME**

HLMS - MISRATA / Misrata International

**HLMS AD 2.2 AERODROME GEOGRAPHICAL AND ADMINISTRATIVE DATA**

1	ARP coordinates and site at AD	N321927 E0150343 (WGS-84)
2	Direction and distance from city	7 km
3	Elevation/Reference temperature	38 ft
4	Geoid undulation at AD ELEV PSN	Nil
5	MAG VAR/Annual change	2.3° E (2012)
6	AD Administration, address, telephone, telefax, telex, AFS, SITA, Email	LCAA International Airport Tripoli Tel/Fax: 00218-21-5630219 Fax: 00218-21-53222 Telex: 20353 CAA LY AFS: HLLTYFYX/HLLTYTYX SITA: TIPYAXS Email: aftn.amhs@gmail.com
7	Types of traffic permitted (IFR/VFR)	IFR / VFR
8	Remarks	Nil

**HLMS AD 2.3 OPERATIONAL HOURS**

1	AD Administration	H24
2	Customs and immigration	H24
3	Health and sanitation	Nil
4	AIS Briefing Office	Nil
5	ATS Reporting Office (ARO)	H24
6	MET Briefing Office	H24
7	ATS	Nil
8	Fuelling	H24
9	Handling	H24
10	Security	Nil
11	De-icing	Nil
12	Remarks	Nil

**HLMS AD 2.4 HANDLING SERVICES AND FACILITIES**

1	Cargo handling facilities	Available
2	Fuel/oil types	Jet A1
3	Fuelling facilities/capacity	Nil
4	De-icing facilities	Nil
5	Hangar space for visiting aircraft	Nil
6	Repair facilities for visiting aircraft	Nil
7	Remarks	Nil

**HLMS AD 2.5 PASSENGER FACILITIES**

1	Hotels	In the city
2	Restaurants	Available in the city
3	Transportation	Available
4	Medical facilities	Available
5	Bank and Post Office	Available
6	Tourist Office	Available
7	Remarks	Nil

**HLMS AD 2.6 RESCUE AND FIRE FIGHTING SERVICES**

1	AD category for fire fighting	CAT 8
2	Rescue equipment	Ambulance
3	Capability for removal of disabled aircraft	Nil
4	Remarks	Nil

**HLMS AD 2.7 SEASONAL AVAILABILITY - CLEARING**

1	Types of clearing equipment	Nil
2	Clearance priorities	Nil
3	Remarks	Nil

**HLMS AD 2.8 APRONS, TAXIWAYS AND CHECK LOCATIONS/POSITIONS DATA**

1	Apron surface and strength	Nil
2	Taxiway width, surface and strength	Nil
3	Altimeter checkpoint location and elevation	Nil
4	VOR checkpoints	Nil
5	INS checkpoints	Nil
6	Remarks	Nil

**HLMS AD 2.9 SURFACE MOVEMENT GUIDANCE AND CONTROL SYSTEM AND MARKINGS**

1	Use of aircraft stand ID signs, TWY guidelines and visual docking/parking guidance system of aircraft stands	Nil
2	RWY and TWY markings and LGT	Nil
3	Stop bars	Nil
4	Remarks	Nil

**HLMS AD 2.10 AERODROME OBSTACLES**

In approach/TKOF areas			In circling area and at AD		Remarks
1			2		
RWY NR. Area affected	Obstacle type Elevation Markings/LGT	Coord.	Obstacle type Elevation Markings/LGT	Coord.	Nil
a	b	c	a	b	
Nil	Nil	Nil	Nil	Nil	

## HLMS AD 2.11 METEOROLOGICAL INFORMATION PROVIDED

1	Associated MET Office	Available
2	Hours of service MET Office outside hours	H24
3	Office responsible for TAF preparation Periods of validity	Nil
4	Trend forecast Interval of issuance	Nil
5	Briefing/consultation provided	H24 Available
6	Flight documentation language(s) used	English
7	Charts and other information available for briefing or consultation	Nil
8	Supplementary equipment available for providing information	Nil
9	ATS units provided with information	Nil
10	Additional information (limitation of service, etc.)	Nil

## HLMS AD 2.12 RUNWAY PHYSICAL CHARACTERISTICS

Designations RWY NR	TRUE BRG	Dimensions of RWY (m)	Strength (PCN) and surface of RWY and SWY	THR coord. RWY end coord. THR geoid undulation	THR elevation and highest elevation of TDZ of precision APP RWY
1	2	3	4	5	6
15	146°	3400 x 45	PCN 100 Asphalt	N322016.90 E0150302.80	THR 35 ft
33	326°			N321845.80 E0150416.20	THR 25 ft
Designations RWY NR	Slope of RWY - SWY	SWY dimensions (m)	CWY dimensions (m)	Strip dimensions (m)	OFZ
1	7	8	9	10	11
15	Nil	30 x 45	300 x 60	3580 x 300	Nil
33	Nil	30 x 45	300 x 60		Nil
Designations RWY NR	Remarks				
1	12				
15	Shoulder 7.5 m wide / Asphalt				
33					

## HLMS AD 2.13 DECLARED DISTANCES

RWY Designator	TORA (m)	TODA (m)	ASDA (m)	LDA (m)	Remarks
1	2	3	4	5	6
15	3400	3700	3430	3400	Nil
33	3400	3700	3430	3400	Nil

**HLMS AD 2.14 APPROACH AND RUNWAY LIGHTING**

RWY Designator	APCH LGT Type LEN INTST	THR LGT colour WBAR	VASIS (MEHT) PAPI	TDZ LGT LEN	RWY CL LGT LEN spacing colour INTST	RWY Edge LGT LEN spacing colour INTST	RWY End LGT colour WBAR	SWY LGT LEN colour	Remarks
1	2	3	4	5	6	7	8	9	10
15	SALS	Nil	PAPI	Nil	Nil	Yes	Nil	Nil	Nil
33	SALS	Nil	PAPI	Nil	Nil	Yes	Nil	Nil	Nil

**HLMS AD 2.15 OTHER LIGHTING, SECONDARY POWER SUPPLY**

1	ABN/IBN location, characteristics and hours of operation	Nil
2	LDI location and LGT Anemometer location and LGT	Nil
3	TWY edge and centreline lighting	Nil
4	Secondary power supply/ Switch-over time	Nil
5	Remarks	Nil

**HLMS AD 2.16 HELICOPTER LANDING AREA**

Nil

**HLMS AD 2.17 ATS AIRSPACE**

1	Designation and lateral limits	Nil
2	Vertical limits	Nil
3	Airspace classification	Nil
4	ATS unit call sign language(s)	Nil
5	Transition altitude/Transition level	5000 / FL70
6	Remarks	Nil

**HLMS AD 2.18 ATS COMMUNICATION FACILITIES**

Service designation	Call sign	Frequency	Hours of operation	Remarks
1	2	3	4	5
TWR	Misrata Tower	118.500 MHz	H24	Nil
GND	Misrata Ground	121.950 MHz	H24	Nil
APP	Misrata Approach	123.200 MHz	H24	Nil

**HLMS AD 2.19 RADIO NAVIGATION AND LANDING AIDS**

Type of aid, MAG VAR CAT of ILS/MLS (For VOR/ILS/MLS, give declination)	ID	Frequency	Hours of operation	Position of transmitting antenna coordinates	Elevation of DME transmitting antenna	Remarks
1	2	3	4	5	6	7
VOR/DME 2°E	MIS	117.100 MHz CH118X	H24	N321851.60 E0150439.70	22 ft	Nil
NDB	AC	445 KHz	H24	N321436 E0150736	Nil	Nil
NDB	MS	330 KHz	H24	N322204 E0150123	Nil	Nil

**HLMS AD 2.20 LOCAL TRAFFIC REGULATIONS**

Nil

**HLMS AD 2.21 NOISE ABATEMENT PROCEDURES**

Nil

**HLMS AD 2.22 FLIGHT PROCEDURES**

Nil

**HLMS AD 2.23 ADDITIONAL INFORMATION**

Nil

**HLMS AD 2.24 CHARTS RELATED TO THE AERODROME**

AERODROME CHART - ICAO

AD 2 HLMS-7

INSTRUMENT APPROACH CHART - ICAO - VOR DME RWY 15

AD 2 HLMS-9

INSTRUMENT APPROACH CHART - ICAO - VOR DME RWY 33

AD 2 HLMS-11

**INTENTIONALLY  
BLANK**

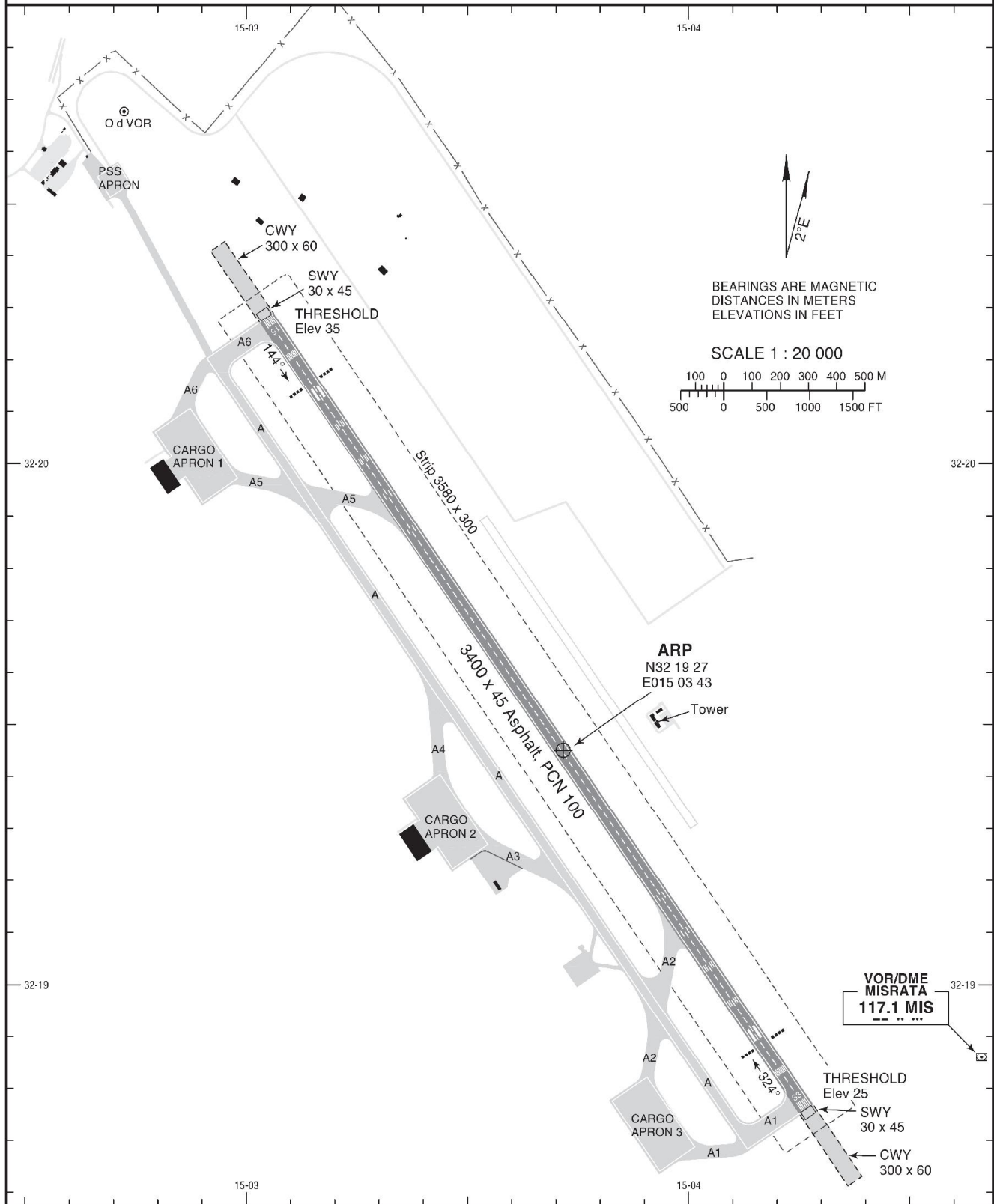
AERODROME  
CHART - ICAO

WGS-84

AD ELEV 38 FT

TWR 118.500  
GND 121.950

MISRATA, LIBYA  
Misrata Intl



RWY	DIRECTION	THRESHOLD	DECLARED DISTANCES				AERODROME LIGHTING
			TORA	TODA	ASDA	LDA	
15	144° MAG	N 32 20 16.90 E 015 03 02.80	3400	3700	3430	3400	Rwy 15: SALS, PAPI, REDL
33	324° MAG	N 32 18 45.80 E 015 04 16.20	3400	3700	3430	3400	Rwy 33: SALS, PAPI, REDL

AMENDMENT: New chart.

**INTENTIONALLY  
BLANK**

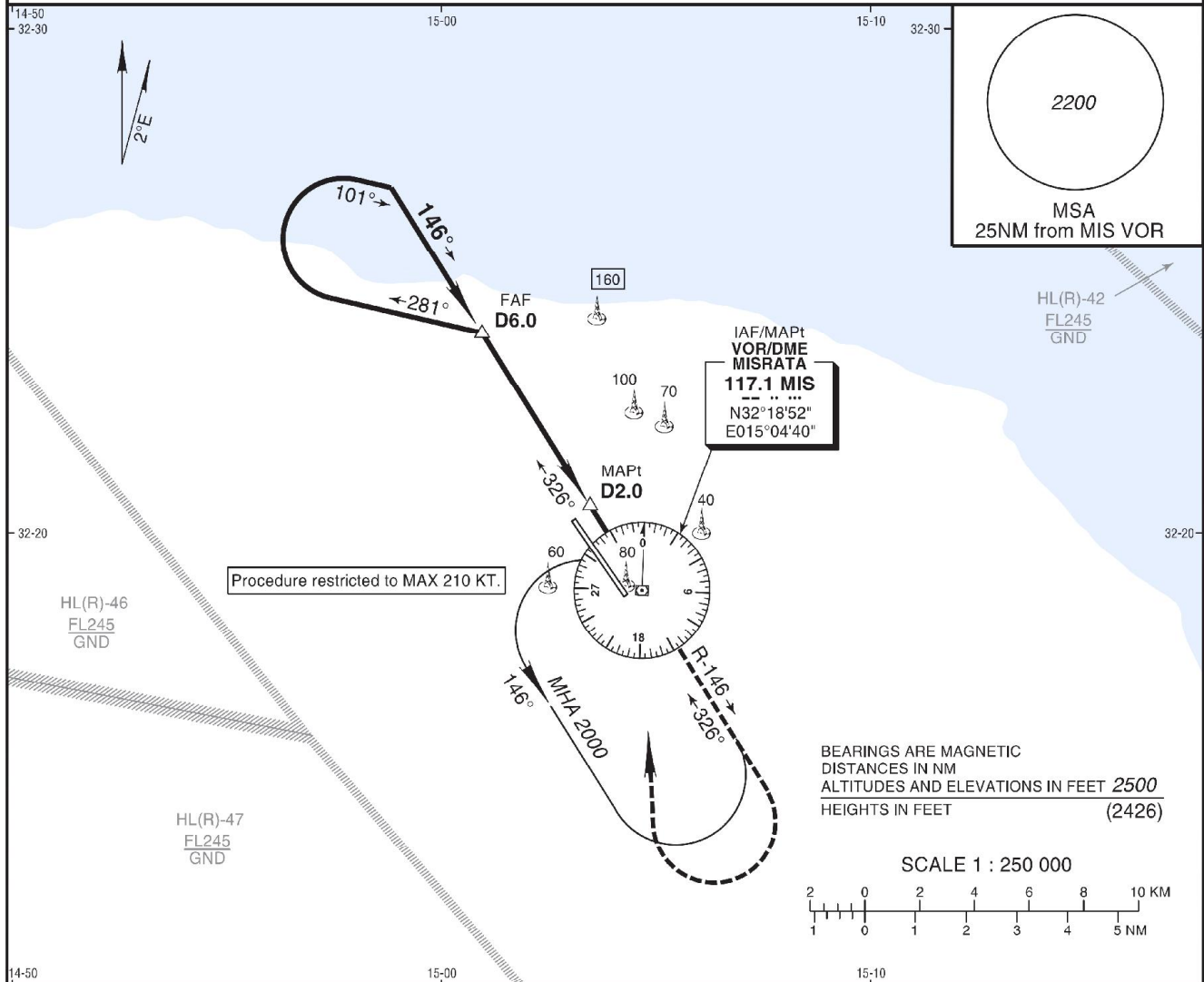


INSTRUMENT  
APPROACH  
CHART - ICAO

AD ELEV 38 FT  
HEIGHTS RELATED TO  
THR RWY 15 ELEV 35 FT

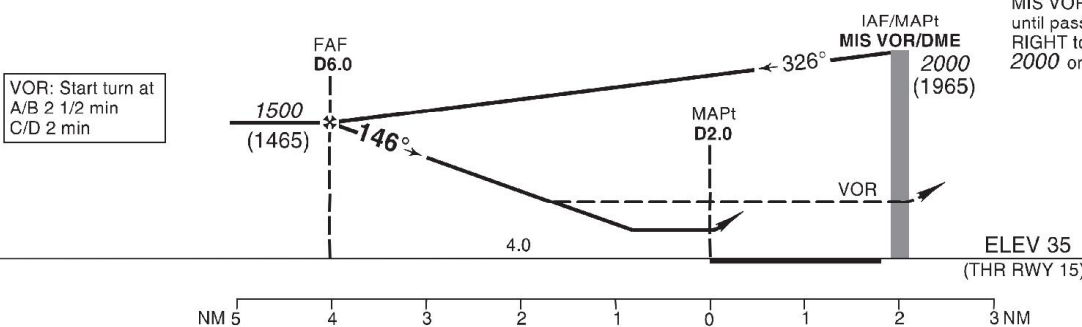
APP	123.200
TWR	118.500
GND	121.950

MISRATA, LIBYA  
Misrata Intl  
VOR DME RWY 15



Trans Altitude 5000  
Trans Level FL 70

**MISSED APPROACH:**  
Climb STRAIGHT AHEAD to MIS VOR. Continue on R-146 MIS until passing 1500, then turn RIGHT to join holding at or above 2000 or as instructed by ATC.



STRAIGHT-IN APPROACH		A	B	C	D
VOR DME	MDA(H)	500 (465)			
	VIS w/o lights	1200		1600	
VOR	MDA(H)	600 (565)			
	VIS w/o lights	1600		2000	
CIRCLING (HAT)*		A	B	C	D
	MDA(H)	1000 (965)			
	VIS	1900	2800	3700	4600

\* Not authorized North of airport.

AMENDMENT: New chart.

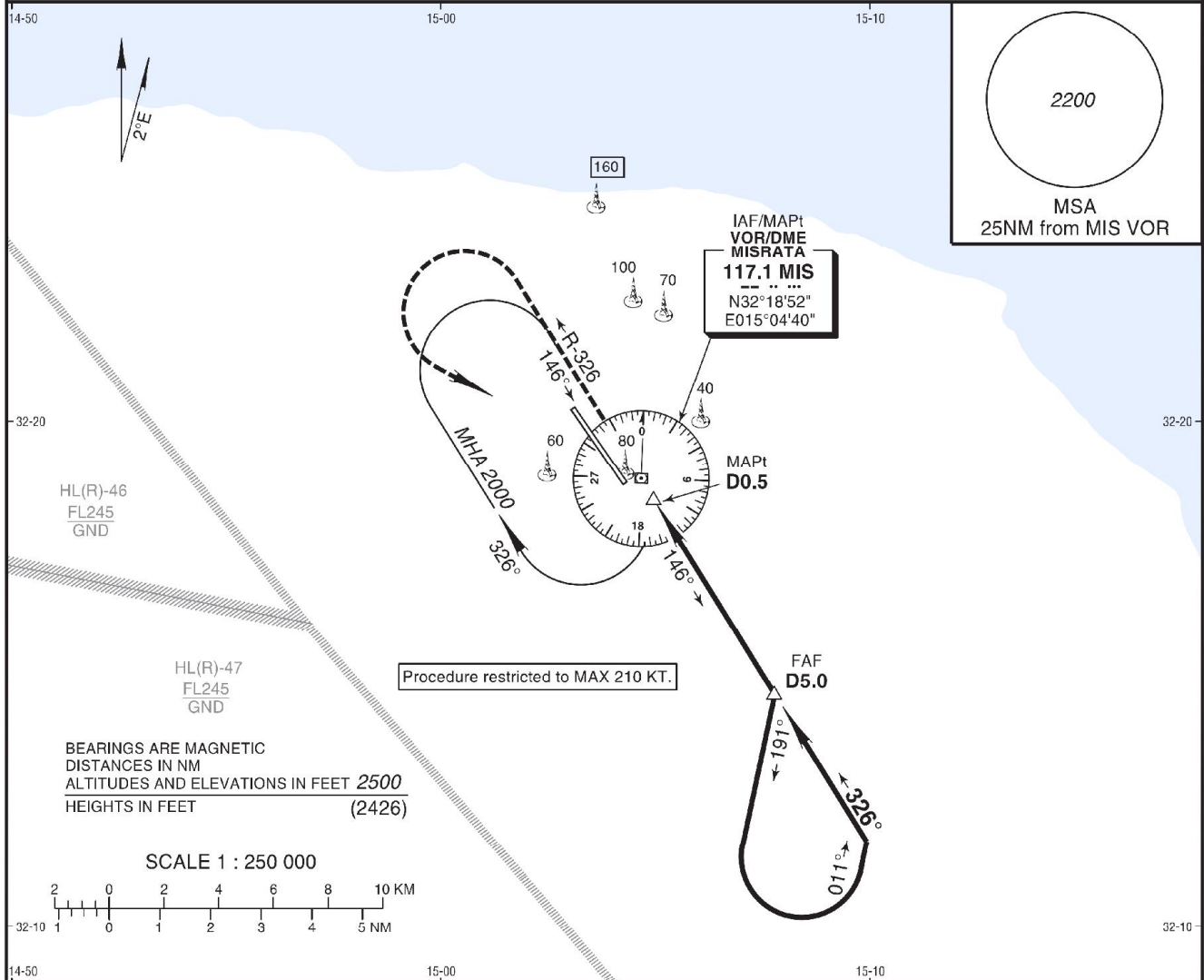
**INTENTIONALLY  
BLANK**

INSTRUMENT  
APPROACH  
CHART - ICAO

AD ELEV 38 FT  
HEIGHTS RELATED TO  
THR RWY 33 ELEV 25 FT

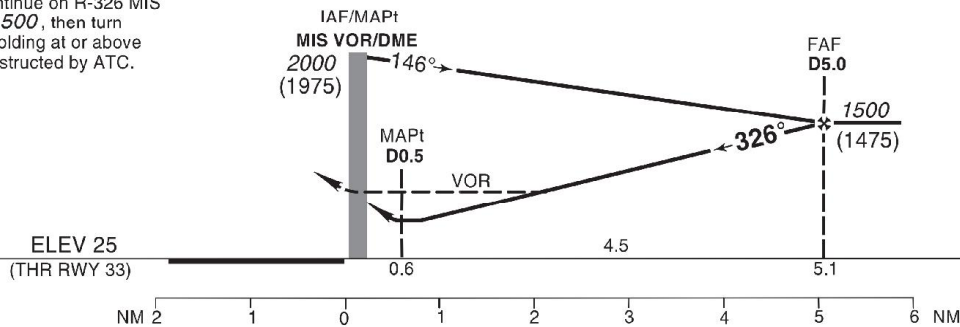
APP 123.200  
TWR 118.500  
GND 121.950

MISRATA, LIBYA  
Misrata Intl  
VOR DME RWY 33



**MISSED APPROACH:**  
Climb STRAIGHT AHEAD to  
MIS VOR. Continue on R-326 MIS  
until passing 1500, then turn  
LEFT to join holding at or above  
2000 or as instructed by ATC.

Trans Altitude 5000  
Trans Level FL 70



STRAIGHT-IN APPROACH		A	B	C	D
VOR DME	MDA(H)	500 (475)			
	VIS w/o lights	1200	1600		2000
VOR	MDA(H)	600 (575)			
	VIS w/o lights	1600	2000		2400
CIRCLING (HAT)*		A	B	C	D
	MDA(H)	1000 (975)			
	VIS	1900	2800	3700	4600

\* Not authorized North of airport.

AMENDMENT: New chart.

**INTENTIONALLY  
BLANK**