

**HLLS AD 2.1 AERODROME LOCATION INDICATOR AND NAME**

HLLS - SEBHA / Sebha International

**HLLS AD 2.2 AERODROME GEOGRAPHICAL AND ADMINISTRATIVE DATA**

1	ARP coordinates and site at AD	N265913.32 E0142821.30 (WGS-84)
2	Direction and distance from city	3 NM south east of Sebha
3	Elevation/Reference temperature	1427 ft / 33.3°C
4	Geoid undulation at AD ELEV PSN	Nil
5	MAG VAR/Annual change	1.9°E (2012)
6	AD Administration, address, telephone, telefax, AFS	Tel: 00218-71-2635458, 2624850, 2631012 FAX: 00218-71-2630129
7	Types of traffic permitted (IFR/VFR)	IFR / VFR
8	Remarks	Nil

**HLLS AD 2.3 OPERATIONAL HOURS**

1	AD Administration	8 HR daily
2	Customs and immigration	H24
3	Health and sanitation	H24
4	AIS Briefing Office	H24
5	ATS Reporting Office (ARO)	H24
6	MET Briefing Office	H24
7	ATS	H24
8	Fuelling	H24
9	Handling	H24
10	Security	H24
11	De-icing	Nil
12	Remarks	Nil

**HLLS AD 2.4 HANDLING SERVICES AND FACILITIES**

1	Cargo handling facilities	Nil
2	Fuel/ oil types	Jet A1- AvGas 100 LL Nil
3	Fuelling facilities/capacity	AvGas 100 LL
4	De-icing facilities	Not available
5	Hangar space for visiting aircraft	Nil
6	Repair facilities for visiting aircraft	For light aircraft only.
7	Remarks	Nil

**HLLS AD 2.5 PASSENGER FACILITIES**

1	Hotels	One hotel at the airport 4 hotels in city
2	Restaurants	Nil at the airport 5 in city
3	Transportation	Taxi and buses
4	Medical facilities	First Aid at airport One general hospital (medical center)
5	Bank and Post Office	Nil
6	Tourist Office	Nil
7	Remarks	Nil

**HLLS AD 2.6 RESCUE AND FIRE FIGHTING SERVICES**

1	AD category for fire fighting	Within AD HR CAT 8
2	Rescue equipment	SAR unit is available at aerodrome
3	Capability for removal of disabled aircraft	Available
4	Remarks	Nil

**HLLS AD 2.7 SEASONAL AVAILABILITY - CLEARING**

1	Types of clearing equipment	Nil
2	Clearance priorities	Nil
3	Remarks	Nil

**HLLS AD 2.8 APRONS, TAXIWAYS AND CHECK LOCATIONS/POSITIONS DATA**

1	Apron surface and strength	Concrete/Asphalt, PCN 85 (Old area: PCN 60)
2	Taxiway width, surface and strength	30 m, Concrete/Asphalt, PCN 86
3	Altimeter checkpoint location and elevation	Nil
4	VOR checkpoints	Nil
5	INS checkpoints	Nil
6	Remarks	Nil

**HLLS AD 2.9 SURFACE MOVEMENT GUIDANCE AND CONTROL SYSTEM AND MARKINGS**

1	Use of aircraft stand ID signs, TWY guidelines and visual docking/parking guidance system of aircraft stands	Available
2	RWY and TWY markings and LGT	Available
3	Stop bars	Calvert RED
4	Remarks	Nil

**HLLS AD 2.10 AERODROME OBSTACLES**

In approach/TKOF areas			In circling area and at AD		Remarks
1			2		
RWY NR. Area affected	Obstacle type Elevation Markings/LGT	Coord. (Dist from THR)	Obstacle type Elevation Markings/LGT	Coord.	
a	b	c	a	b	
31	Fortress - 1620 ft	Nil 0.3 NM north of THR RWY 13	Fortress - 1620 ft	Nil	Nil

## HLLS AD 2.11 METEOROLOGICAL INFORMATION PROVIDED

1	Associated MET Office	Sebha Met Office
2	Hours of service MET Office outside hours	H24
3	Office responsible for TAF preparation Periods of validity	Tripoli - TAF 9/18 HR
4	Trend forecast Interval of issuance	On request 1 HR
5	Briefing/consultation provided	Personal
6	Flight documentation language(s) used	English / Arabic
7	Charts and other information available for briefing or consultation	Nil
8	Supplementary equipment available for providing information	CADS - MET - TEL - FAX
9	ATS units provided with information	Sebha TWR & APP
10	Additional information (limitation of service, etc.)	Nil

## HLLS AD 2.12 RUNWAY PHYSICAL CHARACTERISTICS

Designations RWY NR	TRUE BRG	Dimensions of RWY (m)	Strength (PCN) and surface of RWY and SWY	THR coord. RWY end coord. THR geoid undulation	THR elevation and highest elevation of TDZ of precision APP RWY
1	2	3	4	5	6
13	133°	3600 x 45	Asphalt	N270016.26 E0142704.98	THR 1405 ft
31	313°			N265857.06 E0142840.92	THR 1427 ft
06	061°	1360 x 30	Asphalt	N265851.28 E0142736.82	THR 1409 ft
24	241°			N265912.72 E0142820.17	THR 1416 ft
Designations RWY NR	Slope of RWY - SWY	SWY dimensions (m)	CWY dimensions (m)	Strip dimensions (m)	OFZ
1	7	8	9	10	11
13	Nil	300 x 45	535 x 300	4080 x 300	Nil
31	Nil	60 x 45	520 x 300		
06	Nil	60 x 30	60 x 30	1670 x 150	Nil
24	Nil	60 x 30	60 x 30		
Designations RWY NR	Remarks				
1	12				
13	Nil				
31	Nil				
06	Nil				
24	Nil				

## HLLS AD 2.13 DECLARED DISTANCES

RWY Designator	TORA (m)	TODA (m)	ASDA (m)	LDA (m)	Remarks
1	2	3	4	5	6
13	3600	4135	3900	3600	Nil
31	3600	4120	3660	3600	Nil
06	1360	1420	1420	1360	Nil
24	1360	1420	1420	1360	Nil

## HLLS AD 2.14 APPROACH AND RUNWAY LIGHTING

RWY Designator	APCH LGT Type LEN INTST	THR LGT colour WBAR	VASIS (MEHT) PAPI	TDZ LGT LEN	RWY CL LGT LEN spacing colour INTST	RWY Edge LGT LEN spacing colour INTST	RWY End LGT colour WBAR	SWY LGT LEN colour	Remarks
1	2	3	4	5	6	7	8	9	10
13	ALS LIH CAT II 900 m	Green	VASI-L 3.00°	White	White LIH	White LIH	White LIH	Red	Nil
31	ALS LIH CAT I 900 m								
06	Nil	Nil	Nil	Nil	Nil	Nil	Nil	Nil	Nil
24									

## HLLS AD 2.15 OTHER LIGHTING, SECONDARY POWER SUPPLY

1	ABN/IBN location, characteristics and hours of operations	ABN: FLG Green/White IBN: Nil
2	LDI location and LGT Anemometer location and LGT	Nil
3	TWY edge and centreline lighting	Twy: blue Centreline: white
4	Secondary power supply/ Switch-over time	Diesel Unit 1 MW - on request 1 Sec
5	Remarks	Stop bars, yellow apron edge, obstructions

## HLLS AD 2.16 HELICOPTER LANDING AREA

1	Coordinates TLOF or THR of FATO Geoid undulation	Nil
2	TLOF and/or FATO elevation (m/ft)	Nil
3	TLOF and FATO area dimensions, surface, strength, marking	South side of technical apron Surface: Asphalt
4	True BRG of FATO	Nil
5	Declared distance available	Nil
6	APP and FATO lighting	Direction indicators, perimeter, yellow TDZ
7	Remarks	As directed by ATC

**HLLS AD 2.17 ATS AIRSPACE**

1	<b>Designation and lateral limits</b>	Sebha CTR A circle with radius of 25 NM centered on SEB VOR/DME N265944 E0142735
2	<b>Vertical limits</b>	GND - 5000
3	<b>Airspace classification</b>	C
4	<b>ATS unit call sign language(s)</b>	Sebha TWR/APP English, Arabic
5	<b>Transition altitude/Transition level</b>	5000 ft / FL70
6	<b>Remarks</b>	Nil

**HLLS AD 2.18 ATS COMMUNICATION FACILITIES**

Service designation	Call sign	Frequency	Hours of operation	Remarks
1	2	3	4	5
TWR	Sebha Tower	119.100 MHz	H24	Nil
APP	Sebha Approach	119.100 MHz	H24	Nil
GND	Sebha Ground	121.900 MHz	HO	Nil

**HLLS AD 2.19 RADIO NAVIGATION AND LANDING AIDS**

Type of aid, MAG VAR CAT of ILS/MLS (For VOR/ILS/MLS, give declination)	ID	Frequency	Hours of operation	Position of transmitting antenna coordinates	Elevation of DME transmitting antenna	Remarks
1	2	3	4	5	6	7
VOR/DME 2°E	SEB	114.700 MHz	H24	N265944.14 E0142735.05	1405 ft	Nil
NDB	SEB	283 KHz	H24	N270048.40 E0143005.20	Nil	Nil
MM			HO	N270250.20 E0142357.20	Nil	Nil
ILS RWY 13 CAT II						
LOC 2°E	I-SBH	110.300 MHz	H24	N265848.24 E0142848.30	Nil	Nil
GP	I-SBH	335.000 MHz	HO	N270006.12 E0142710.08	Nil	Glideslope 3°

**HLLS AD 2.20 LOCAL TRAFFIC REGULATIONS**

**20.1 Airport regulation**

General:

Aerodrome restricted to aircraft capable of maintaining two-way radio communications with ATC.

**20.2 Taxiing to and from stands**

- a) Arriving flights will be allocated stand number by the ground controller and assistance from "FOLLOW ME" vehicle can be requested via the ground controller.
- b) Departing IFR flights shall contact the TWR to obtain ATC clearance before commencing taxiing.

**20.3 Parking area for small aircraft (General aviation)**

General aviation aircraft shall not be guided by marshalls to the parking area for small aircraft.

**20.4 Parking area for helicopters**

As directed by ATC.

**20.5 Apron - taxiing during winter conditions**

Not applicable.

**20.6 Taxiing-limitations**

Nil.

**20.7 School and training flights - technical test flights - use of runways**

Nil.



**20.8 Helicopter traffic - limitation**

Nil.

**20.9 Removal of disabled aircraft from runways**

When an aircraft is wrecked on a runway, it is the duty of the owner or user of such aircraft to

have it removed as soon as possible. If a wrecked aircraft is not removed from the runway as quickly as possible by the owner or user, the aircraft will be removed by the aerodrome authority at the owner's or user's expense.

**HLLS AD 2.21 NOISE ABATEMENT PROCEDURES**

Non Noise Certificated subsonic airplane (NNC) operations restricted daily between sunset/sunrise.

**HLLS AD 2.22 FLIGHT PROCEDURES**

**22.1 Communication failure**

In the communication failure, the pilot shall act in accordance with the communication failure procedures in Annex 2. For the TRIPOLI FIR, information concerning the associated navigation aids and the routing is given on page ENR 1.6-2.

**22.2 Procedures for VFR flights within Sebha CTR**

Provided traffic conditions so permit ATC clearance for VFR flights will be given under the conditions described below:

- a) A flight plan requesting ATC clearance, containing items 7 to 18 and indicating the purpose of the flight, shall be submitted.
- b) ATC clearance shall be obtained immediately before the aircraft enters the area concerned.
- c) Position reports shall be submitted in accordance with 3.6.3 of ANNEX 2.
- d) Deviation from the ATC clearance may only be made when prior permission has been obtained.

e) The flight shall be conducted with vertical visual reference to the ground unless the flight can be conducted in accordance with the Instrument Flight Rules.

f) Two-way radio communication shall be maintained on the frequency prescribed. Information about the appropriate frequency can be obtained from Tripoli Information.

g) The pilot-in-command shall be the holder of an International VHF licence.

**22.3 Procedures for VFR flights within Sebha CTR**

a) Flight plan shall be filed for the flight concerned.

b) ATC clearance shall be obtained from the Control Tower.

c) Deviation from ATC clearance may only be made when prior permission has been obtained.

d) The flight shall be conducted with vertical visual reference to the ground

e) Two-way radio communication shall be established on the frequency prescribed before flight takes place in the control zone.

**HLLS AD 2.23 ADDITIONAL INFORMATION**

Nil

**HLLS AD 2.24 CHARTS RELATED TO THE AERODROME**

AERODROME CHART - ICAO	AD 2 HLLS-7
AERODROME OBSTACLE CHART - ICAO - TYPE A	AD 2 HLLS-9
STANDARD DEPARTURE CHART INSTRUMENT - ICAO - RWY 13	AD 2 HLLS-11
STANDARD DEPARTURE CHART INSTRUMENT - ICAO - RWY 31	AD 2 HLLS-13
STANDARD ARRIVAL CHART INSTRUMENT - ICAO - RWY 13 (ARR A)	AD 2 HLLS-15
STANDARD ARRIVAL CHART INSTRUMENT - ICAO - RWY 13 (ARR B)	AD 2 HLLS-17
STANDARD ARRIVAL CHART INSTRUMENT - ICAO - RWY 31 (ARR D)	AD 2 HLLS-19
STANDARD ARRIVAL CHART INSTRUMENT - ICAO - RWY 31 (ARR E)	AD 2 HLLS-21
INSTRUMENT APPROACH CHART - ICAO - ILS DME RWY 13	AD 2 HLLS-23
INSTRUMENT APPROACH CHART - ICAO - VOR DME RWY 13	AD 2 HLLS-25
INSTRUMENT APPROACH CHART - ICAO - VOR DME RWY 31	AD 2 HLLS-27
VISUAL APPROACH CHART - ICAO	AD 2 HLLS-29

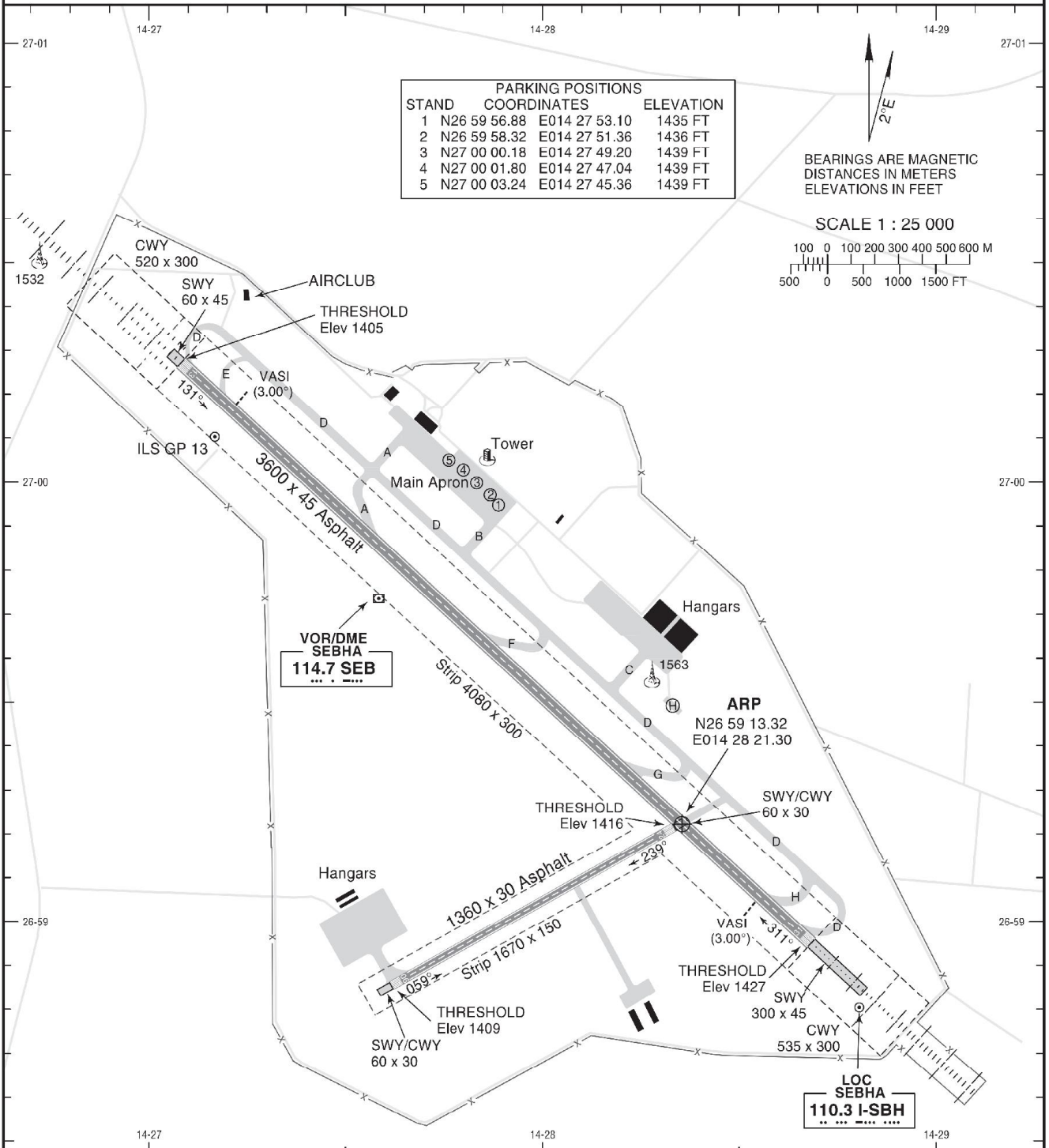
AERODROME  
CHART - ICAO

WGS-84

AD ELEV 1427 FT

TWR	119.100
GND	121.900

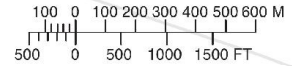
SEBHA, LIBYA  
Sebha Intl



STAND	COORDINATES	ELEVATION
1	N26 59 56.88 E014 27 53.10	1435 FT
2	N26 59 58.32 E014 27 51.36	1436 FT
3	N27 00 00.18 E014 27 49.20	1439 FT
4	N27 00 01.80 E014 27 47.04	1439 FT
5	N27 00 03.24 E014 27 45.36	1439 FT

BEARINGS ARE MAGNETIC  
DISTANCES IN METERS  
ELEVATIONS IN FEET

SCALE 1 : 25 000



RWY	DIRECTION	THRESHOLD	DECLARED DISTANCES				AERODROME LIGHTING
			TORA	TODA	ASDA	LDA	
13	131° MAG	N 27 00 16.26 E 014 27 04.98	3600	4135	3900	3600	Rwy 13: ALS LIH, Calvert CAT II (900m) Rwy 31: ALS LIH, Calvert CAT I (900m) Rwy 13/31: RTHL Green, VASI-L 3.00°, RTZL White, RCLL LIH White, REDL LIH White, RENL White, STWL Red
31	311° MAG	N 26 58 57.06 E 014 28 40.92	3600	4120	3660	3600	
06	059° MAG	N 26 58 51.28 E 014 27 36.82	1360	1420	1420	1360	Rwy 06/24: Nil
24	239° MAG	N 26 59 12.72 E 014 28 20.17	1360	1420	1420	1360	

AMENDMENT: New edition.

**INTENTIONALLY  
BLANK**



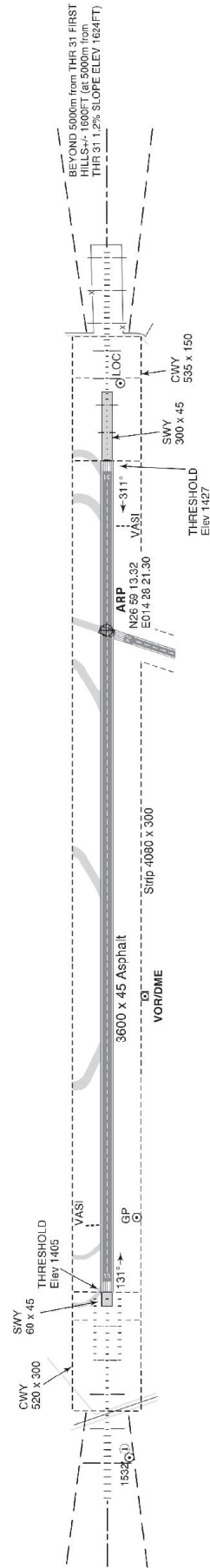
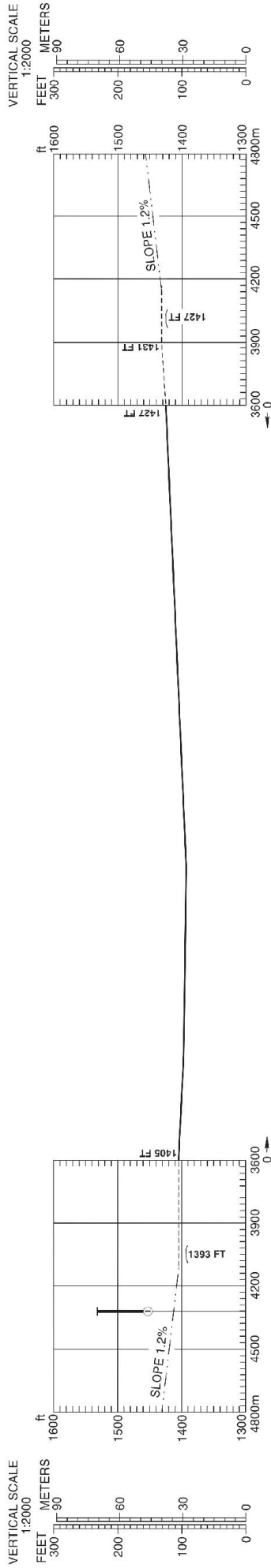
AERODROME OBSTACLE CHART-ICAO  
TYPE A (OPERATING LIMITATIONS)

SEBHA, LIBYA  
Sebha Intl

DISTANCES IN METERS, ELEVATIONS IN FEET  
MAGNETIC VARIATION 2° E, 2012

**RWY 13-31**

DECLARED DISTANCES	
<b>RWY 13</b>	<b>RWY 31</b>
3600	TAKE-OFF RUN AVAILABLE 3600
4135	TAKE-OFF DISTANCE AVAILABLE 4120
3900	ACCELERATE STOP DISTANCE AVAILABLE 3660
3600	LANDING DISTANCE AVAILABLE 3600



AMENDMENT RECORD	
No.	Date
	Entered by

HORIZONTAL SCALE 1 : 20 000

LEGEND	
IDENTIFICATION NUMBER	PLAN
GROUND LEVEL	▲
POLE, TOWER, SPIRE, ANTENNA, ETC.	⊙
TREE	*
MOBILE	⊖

**INTENTIONALLY  
BLANK**

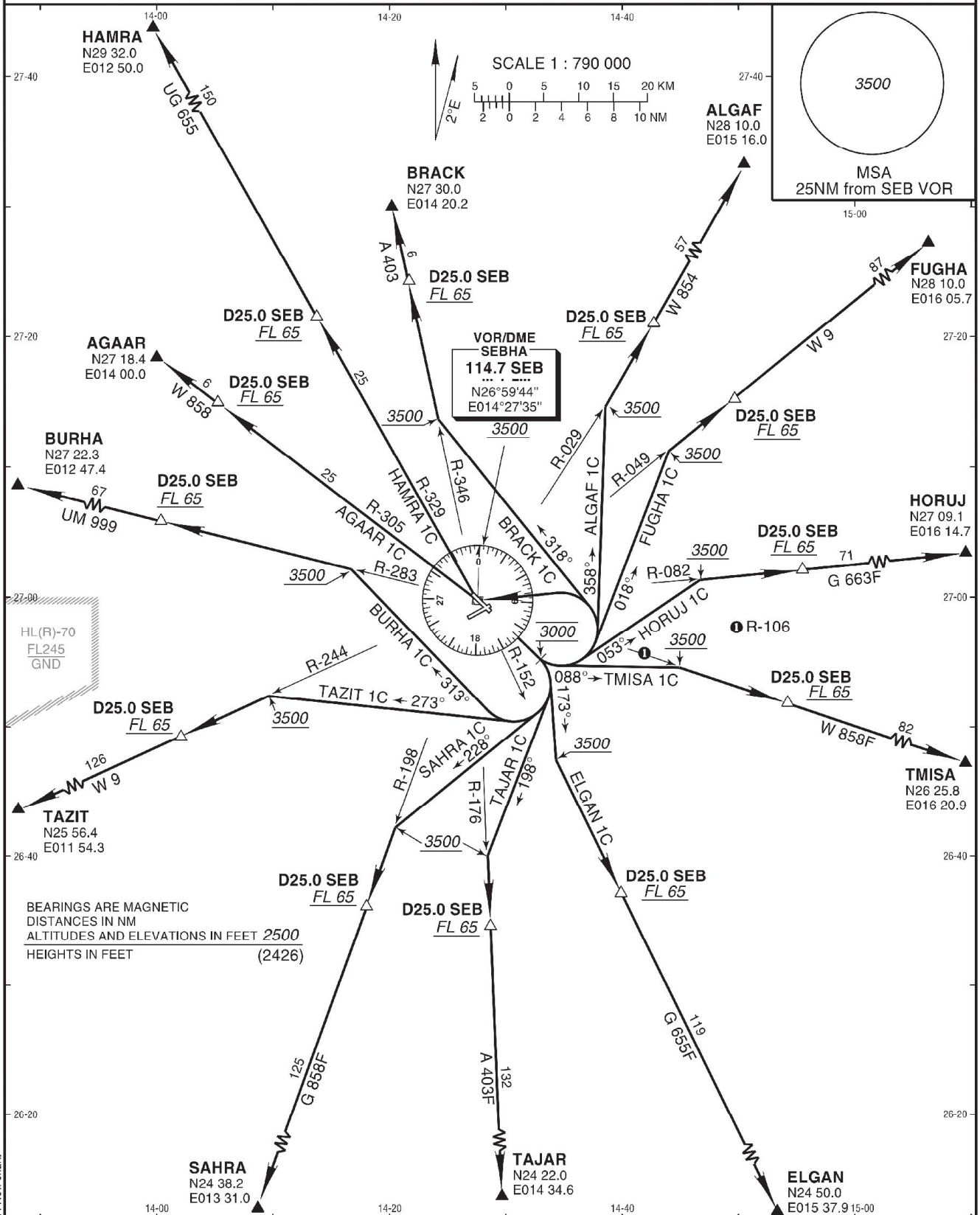
STANDARD DEPARTURE  
CHART INSTRUMENT  
(SID) - ICAO

AD ELEV 1427 FT  
Trans Alt 5000  
Trans Level FL 70

APP	119.100
TWR	119.100
GND	121.900

SEBHA, LIBYA  
Sebha Intl  
RWY 13

**ALGAF 1C, FUGHA 1C, HORUJ 1C, TMISA 1C, ELGAN 1C, TAJAR 1C, SAHRA 1C, TAZIT 1C, BURHA 1C, AGAAR 1C, HAMRA 1C, BRACK 1C DEPARTURE**



**ROUTING**

For detailed Route description see reverse page.

AMENDMENT: New chart.

## Standard Instrument Departure Routes RWY 13

ROUTING	
<b>ALGAF 1C</b>	Climb STRAIGHT AHEAD to 3000, then climbing turn LEFT on track 358° as cleared but not below 3500 to intercept and follow R-029 SEB along W854 to ALGAF. Cross D25.0 SEB not below FL 65.
<b>FUGHA 1C</b>	Climb STRAIGHT AHEAD to 3000, then climbing turn LEFT on track 018° as cleared but not below 3500 to intercept and follow R-048 SEB along W9 to FUGHA. Cross D25.0 SEB not below FL 65.
<b>HORUJ 1C</b>	Climb STRAIGHT AHEAD to 3000, then climbing turn LEFT on track 053° as cleared but not below 3500 to intercept and follow R-082 SEB along G663F to HORUJ. Cross D25.0 SEB not below FL 65.
<b>TMISA 1C</b>	Climb STRAIGHT AHEAD to 3000, then climbing turn LEFT on track 088° as cleared but not below 3500 to intercept and follow R-106 SEB along W858F to TMISA. Cross D25.0 SEB not below FL 65.
<b>ELGAN 1C</b>	Climb STRAIGHT AHEAD to 3000, then climbing turn RIGHT on track 173° as cleared but not below 3500 to intercept and follow R-152 SEB along G655F to ELGAN. Cross D25.0 SEB not below FL 65.
<b>TAJAR 1C</b>	Climb STRAIGHT AHEAD to 3000, then climbing turn RIGHT on track 198° as cleared but not below 3500 to intercept and follow R-176 SEB along A403F to TAJAR. Cross D25.0 SEB not below FL 65.
<b>SAHRA 1C</b>	Climb STRAIGHT AHEAD to 3000, then climbing turn RIGHT on track 228° as cleared but not below 3500 to intercept and follow R-198 SEB along G858F to SAHRA. Cross D25.0 SEB not below FL 65.
<b>TAZIT 1C</b>	Climb STRAIGHT AHEAD to 3000, then climbing turn RIGHT on track 273° as cleared but not below 3500 to intercept and follow R-244 SEB along W9 to TAZIT. Cross D25.0 SEB not below FL 65.
<b>BURHA 1C</b>	Climb STRAIGHT AHEAD to 3000, then climbing turn RIGHT on track 313° as cleared but not below 3500 to intercept and follow R-283 SEB along UM999 to BURHA. Cross D25.0 SEB not below FL 65.
<b>AGAAR 1C</b>	Climb STRAIGHT AHEAD to 3000, then climbing turn LEFT as cleared but not below 3500 direct to SEB VOR, intercept and follow R-305 SEB along W858 to AGAAR. Cross D25.0 SEB not below FL 65.
<b>HAMRA 1C</b>	Climb STRAIGHT AHEAD to 3000, then climbing turn LEFT as cleared but not below 3500 direct to SEB VOR, intercept and follow R-329 SEB along UG655 to HAMRA. Cross D25.0 SEB not below FL 65.
<b>BRACK 1C</b>	Climb STRAIGHT AHEAD to 3000, then climbing turn LEFT on track 318° as cleared but not below 3500 to intercept and follow R-345 SEB along A403 to BRACK. Cross D25.0 SEB not below FL 65.

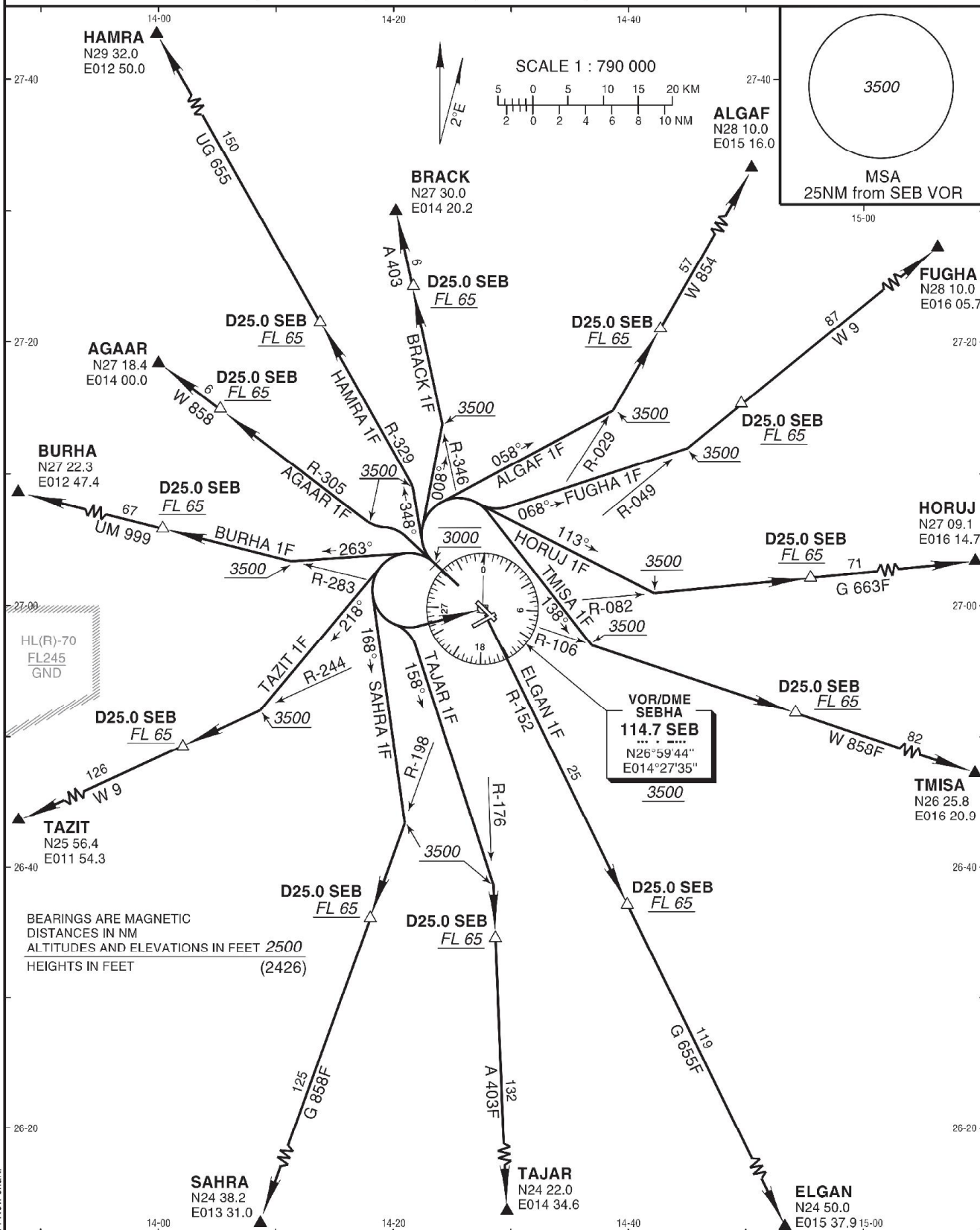
STANDARD DEPARTURE  
CHART INSTRUMENT  
(SID) - ICAO

AD ELEV 1427 FT  
Trans Alt 5000  
Trans Level FL 70

APP	119.100
TWR	119.100
GND	121.900

SEBHA, LIBYA  
Sebha Intl  
RWY 31

ALGAF 1F, FUGHA 1F, HORUJ 1F, TMISA 1F, ELGAN 1F, TAJAR 1F, SAHRA 1F,  
TAZIT 1F, BURHA 1F, AGAAR 1F, HAMRA 1F, BRACK 1F DEPARTURE



ROUTING

For detailed Route description see reverse page.

AMENDMENT: New chart.



## Standard Instrument Departure Routes RWY 31

ROUTING	
<b>ALGAF 1F</b>	Climb STRAIGHT AHEAD to 3000, then climbing turn RIGHT on track 058° as cleared but not below 3500 to intercept and follow R-029 SEB along W854 to ALGAF. Cross D25.0 SEB not below FL 65.
<b>FUGHA 1F</b>	Climb STRAIGHT AHEAD to 3000, then climbing turn RIGHT on track 068° as cleared but not below 3500 to intercept and follow R-048 SEB along W9 to FUGHA. Cross D25.0 SEB not below FL 65.
<b>HORUJ 1F</b>	Climb STRAIGHT AHEAD to 3000, then climbing turn RIGHT on track 113° as cleared but not below 3500 to intercept and follow R-082 SEB along G663F to HORUJ. Cross D25.0 SEB not below FL 65.
<b>TMISA 1F</b>	Climb STRAIGHT AHEAD to 3000, then climbing turn RIGHT on track 138° as cleared but not below 3500 to intercept and follow R-106 SEB along W858F to TMISA. Cross D25.0 SEB not below FL 65.
<b>ELGAN 1F</b>	Climb STRAIGHT AHEAD to 3000, then climbing turn LEFT as cleared but not below 3500 direct to SEB VOR, intercept and follow R-152 SEB along G655F to ELGAN. Cross D25.0 SEB not below FL 65.
<b>TAJAR 1F</b>	Climb STRAIGHT AHEAD to 3000, then climbing turn LEFT on track 158° as cleared but not below 3500 to intercept and follow R-176 SEB along A403F to TAJAR. Cross D25.0 SEB not below FL 65.
<b>SAHRA 1F</b>	Climb STRAIGHT AHEAD to 3000, then climbing turn LEFT on track 168° as cleared but not below 3500 to intercept and follow R-198 SEB along G858F to SAHRA. Cross D25.0 SEB not below FL 65.
<b>TAZIT 1F</b>	Climb STRAIGHT AHEAD to 3000, then climbing turn LEFT on track 218° as cleared but not below 3500 to intercept and follow R-244 SEB along W9 to TAZIT. Cross D25.0 SEB not below FL 65.
<b>BURHA 1F</b>	Climb STRAIGHT AHEAD to 3000, then climbing turn LEFT on track 263° as cleared but not below 3500 to intercept and follow R-283 SEB along UM999 to BURHA. Cross D25.0 SEB not below FL 65.
<b>AGAAR 1F</b>	Climb STRAIGHT AHEAD as cleared but not below 3500 to intercept and follow R-305 SEB along W858 to AGAAR. Cross D25.0 SEB not below FL 65.
<b>HAMRA 1F</b>	Climb STRAIGHT AHEAD to 3000, then climbing turn RIGHT on track 348° as cleared but not below 3500 to intercept and follow R-329 SEB along UG655 to HAMRA. Cross D25.0 SEB not below FL 65.
<b>BRACK 1F</b>	Climb STRAIGHT AHEAD to 3000, then climbing turn RIGHT on track 008° as cleared but not below 3500 to intercept and follow R-345 SEB along A403 to BRACK. Cross D25.0 SEB not below FL 65.

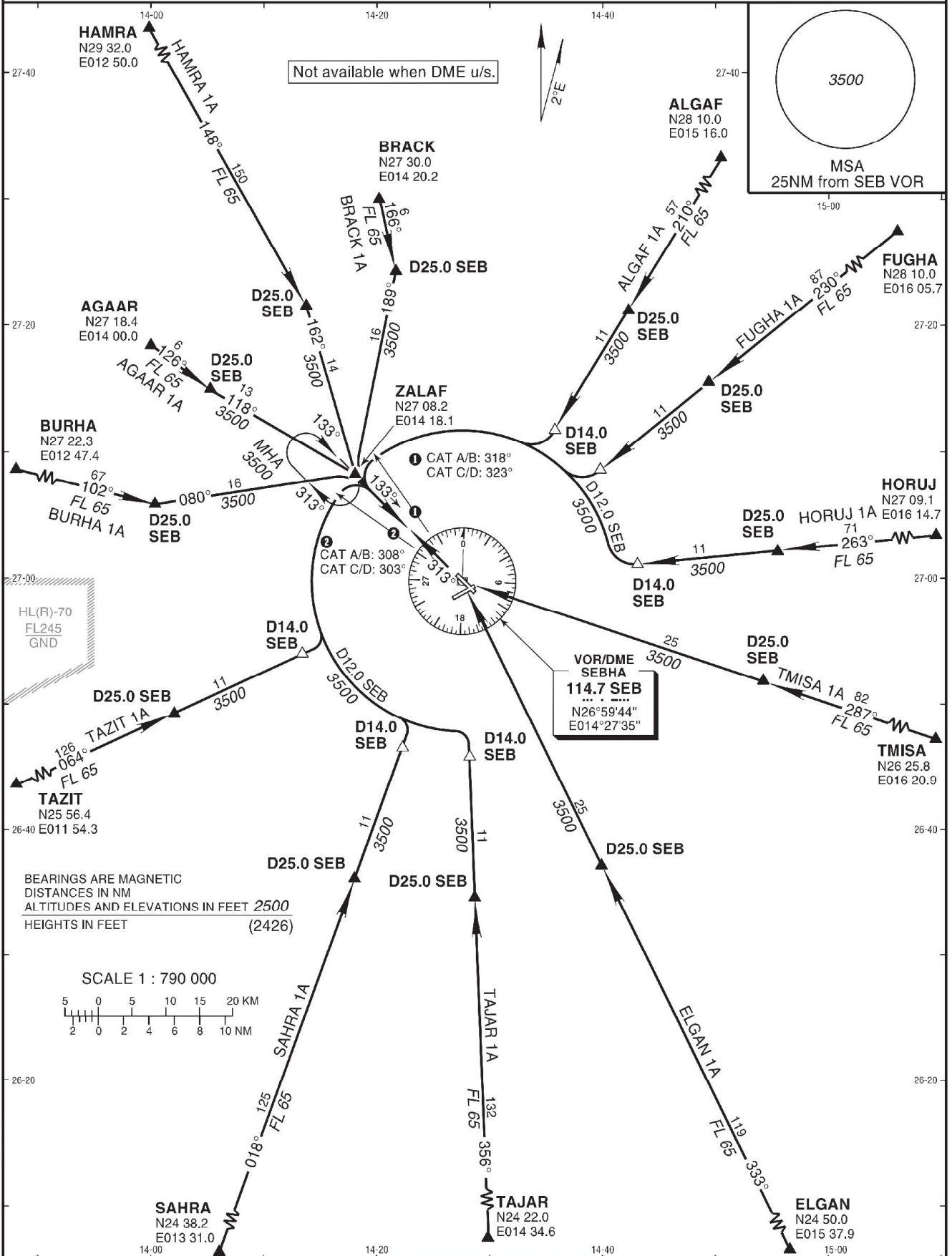
STANDARD ARRIVAL  
CHART INSTRUMENT  
(STAR) - ICAO

AD ELEV 1427 FT  
Trans Alt 5000  
Trans Level FL 70

APP 119.100  
TWR 119.100  
GND 121.900

SEBHA, LIBYA  
Sebha Intl  
RWY 13

ALGAF 1A, FUGHA 1A, HORUJ 1A, TMISA 1A, ELGAN 1A, TAJAR 1A, SAHRA 1A,  
TAZIT 1A, BURHA 1A, AGAAR 1A, HAMRA 1A, BRACK 1A ARRIVAL



**INTENTIONALLY  
BLANK**

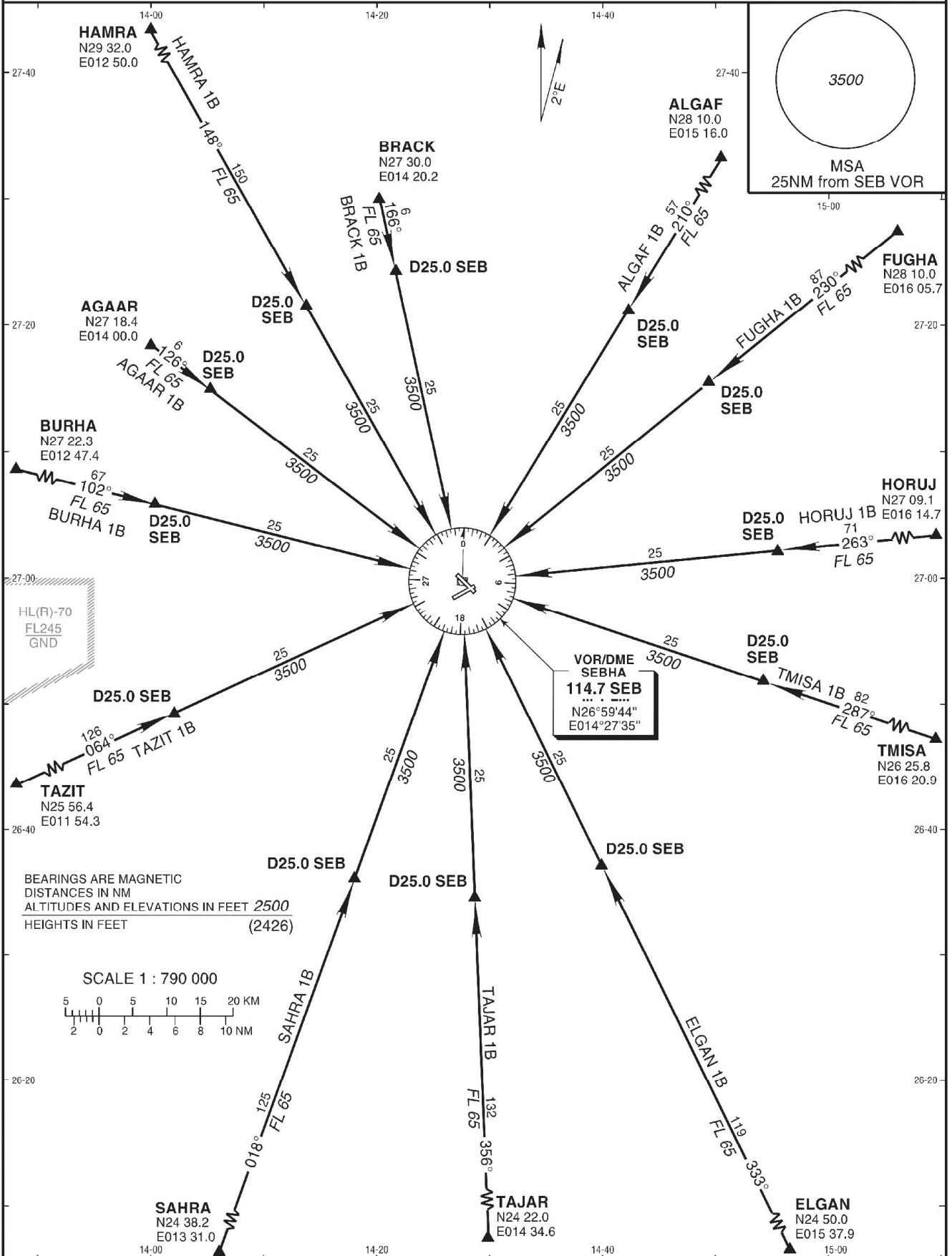
STANDARD ARRIVAL  
CHART INSTRUMENT  
(STAR) - ICAO

AD ELEV 1427 FT  
Trans Alt 5000  
Trans Level FL 70

APP	119.100
TWR	119.100
GND	121.900

SEBHA, LIBYA  
Sebha Intl  
RWY 13

ALGAF 1B, FUGHA 1B, HORUJ 1B, TMISA 1B, ELGAN 1B, TAJAR 1B, SAHRA 1B,  
TAZIT 1B, BURHA 1B, AGAAR 1B, HAMRA 1B, BRACK 1B ARRIVAL



AMENDMENT: New chart.

**INTENTIONALLY  
BLANK**



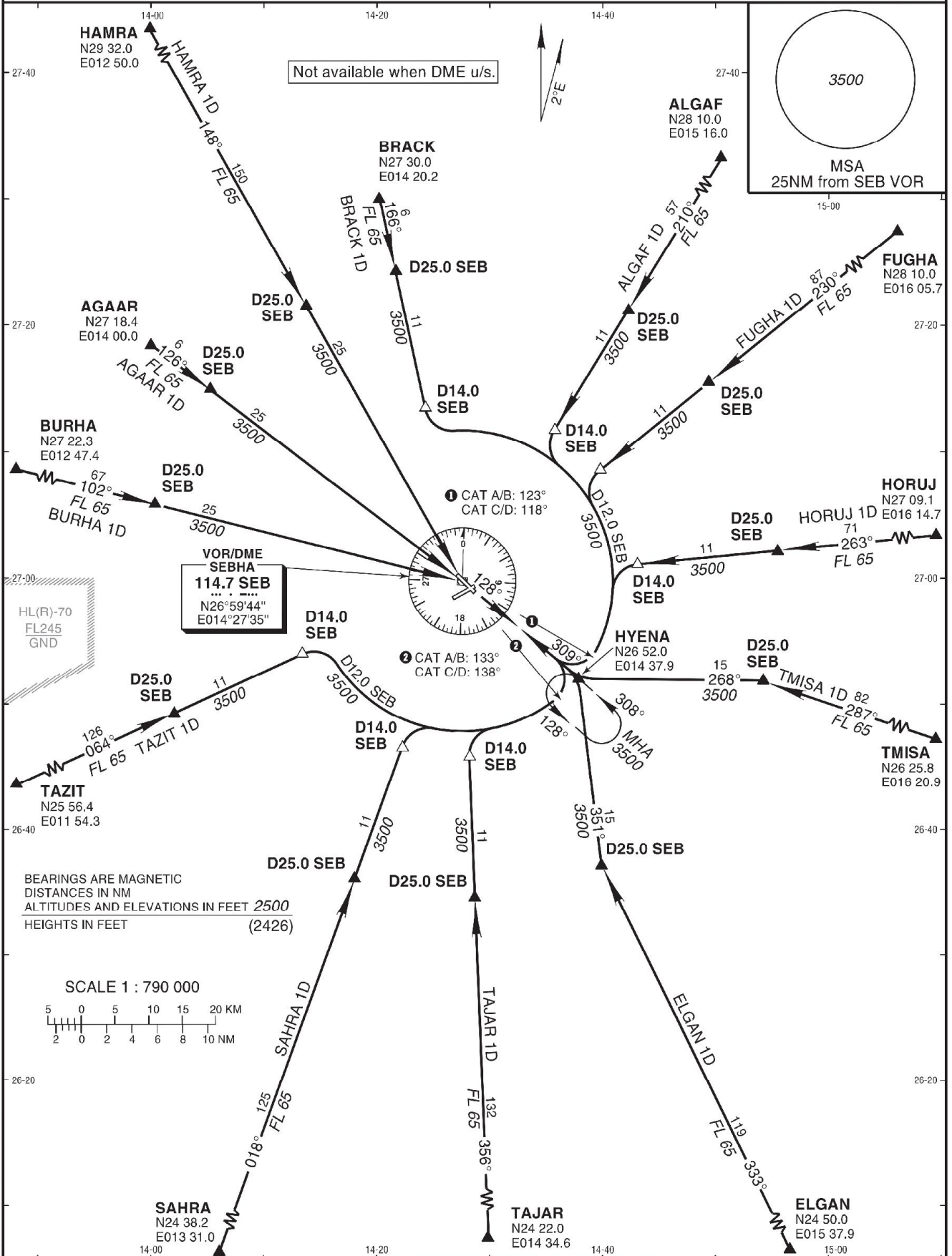
STANDARD ARRIVAL  
CHART INSTRUMENT  
(STAR) - ICAO

AD ELEV 1427 FT  
Trans Alt 5000  
Trans Level FL 70

APP	119.100
TWR	119.100
GND	121.900

SEBHA, LIBYA  
Sebha Intl  
RWY 31

ALGAF 1D, FUGHA 1D, HORUJ 1D, TMISA 1D, ELGAN 1D, TAJAR 1D, SAHRA 1D,  
TAZIT 1D, BURHA 1D, AGAAR 1D, HAMRA 1D, BRACK 1D ARRIVAL



AMENDMENT: New chart.

**INTENTIONALLY  
BLANK**

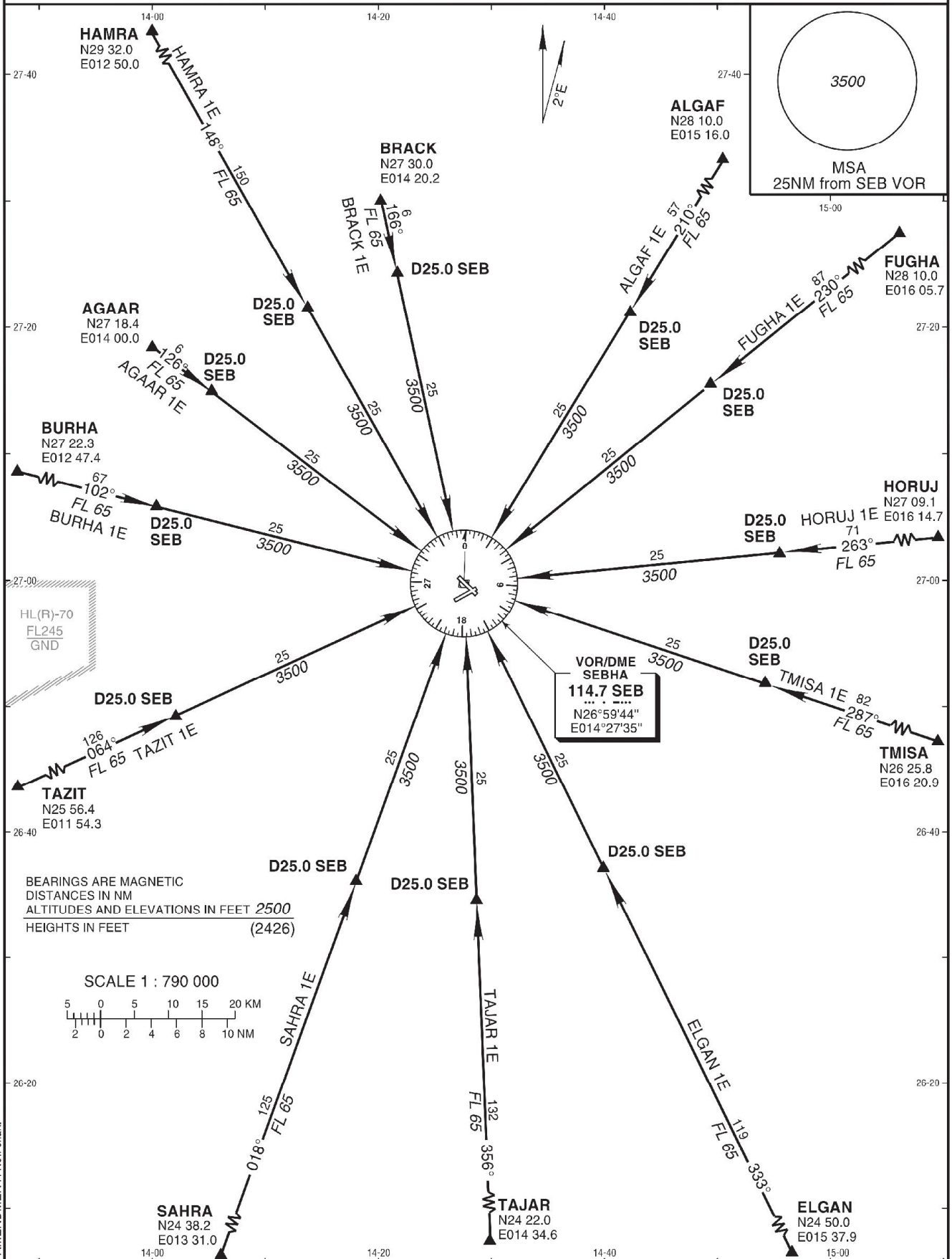
STANDARD ARRIVAL  
CHART INSTRUMENT  
(STAR) - ICAO

AD ELEV 1427 FT  
Trans Alt 5000  
Trans Level FL 70

APP	119.100
TWR	119.100
GND	121.900

SEBHA, LIBYA  
Sebha Intl  
RWY 31

ALGAF 1E, FUGHA 1E, HORUJ 1E, TMISA 1E, ELGAN 1E, TAJAR 1E, SAHRA 1E,  
TAZIT 1E, BURHA 1E, AGAAR 1E, HAMRA 1E, BRACK 1E ARRIVAL

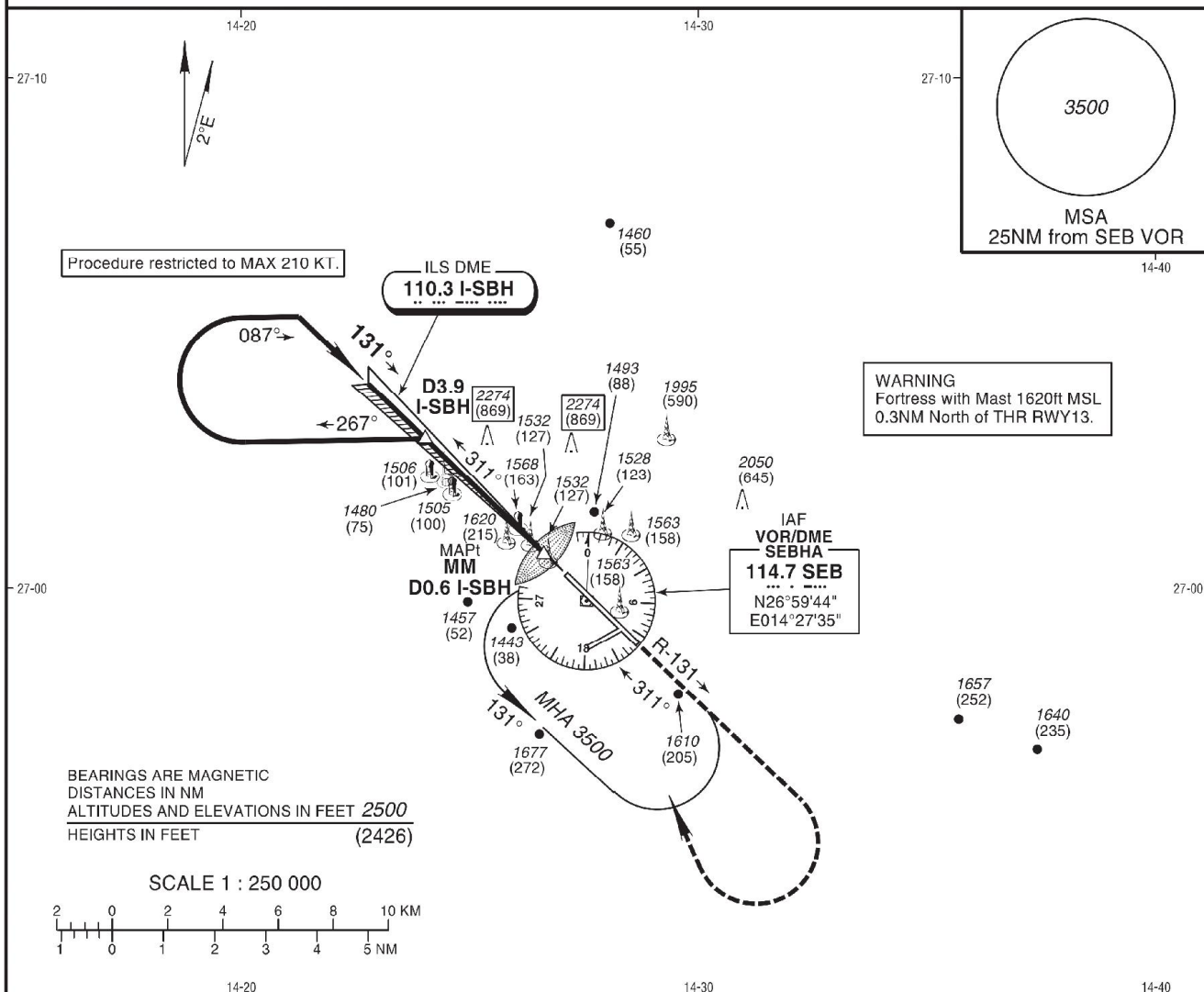


**INTENTIONALLY  
BLANK**

INSTRUMENT APPROACH CHART - ICAO  
AD ELEV 1427 FT  
HEIGHTS RELATED TO THR RWY 13 ELEV 1405 FT

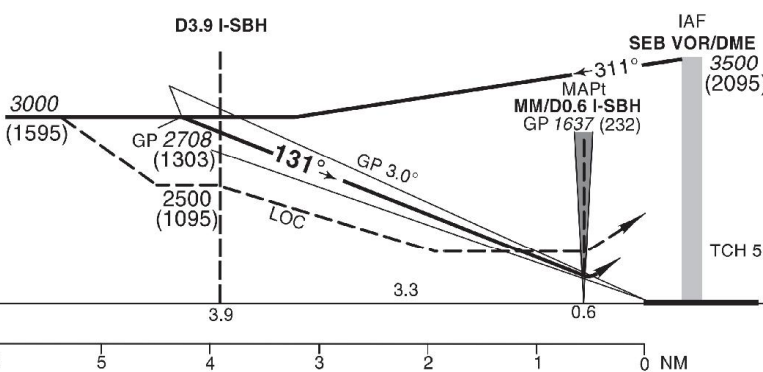
APP 119.100  
TWR 119.100  
GND 121.900

SEBHA, LIBYA  
Sebha Intl  
ILS DME RWY 13



Trans Altitude 5000  
Trans Level FL 70

Start turn at 1 MIN from D3.9 I-SBH



**MISSED APPROACH:**  
Climb STRAIGHT AHEAD on R-131 SEB to 3000, then climbing turn RIGHT to 3500 to SEB VOR and hold.

STRAIGHT-IN APPROACH					ADVISORY INFORMATION ONLY							
	A	B	C	D	Ground speed kt	70	90	100	120	140	160	
ILS DME	DA(H)	1637 (232)				ILS GP 3.0° ft/min	377	484	538	646	753	861
	VIS w/o lights	1200										
LOC	MDA(H)	2009 (604)										
	VIS w/o lights	800		1200								
	1600		1600									
CIRCLING (HAA)*	A	B	C	D								
	MDA(H)	2300 (873)										
	VIS	1900	2800	3700	4600							

\* Not authorized East of airport.

AMENDMENT: New edition.



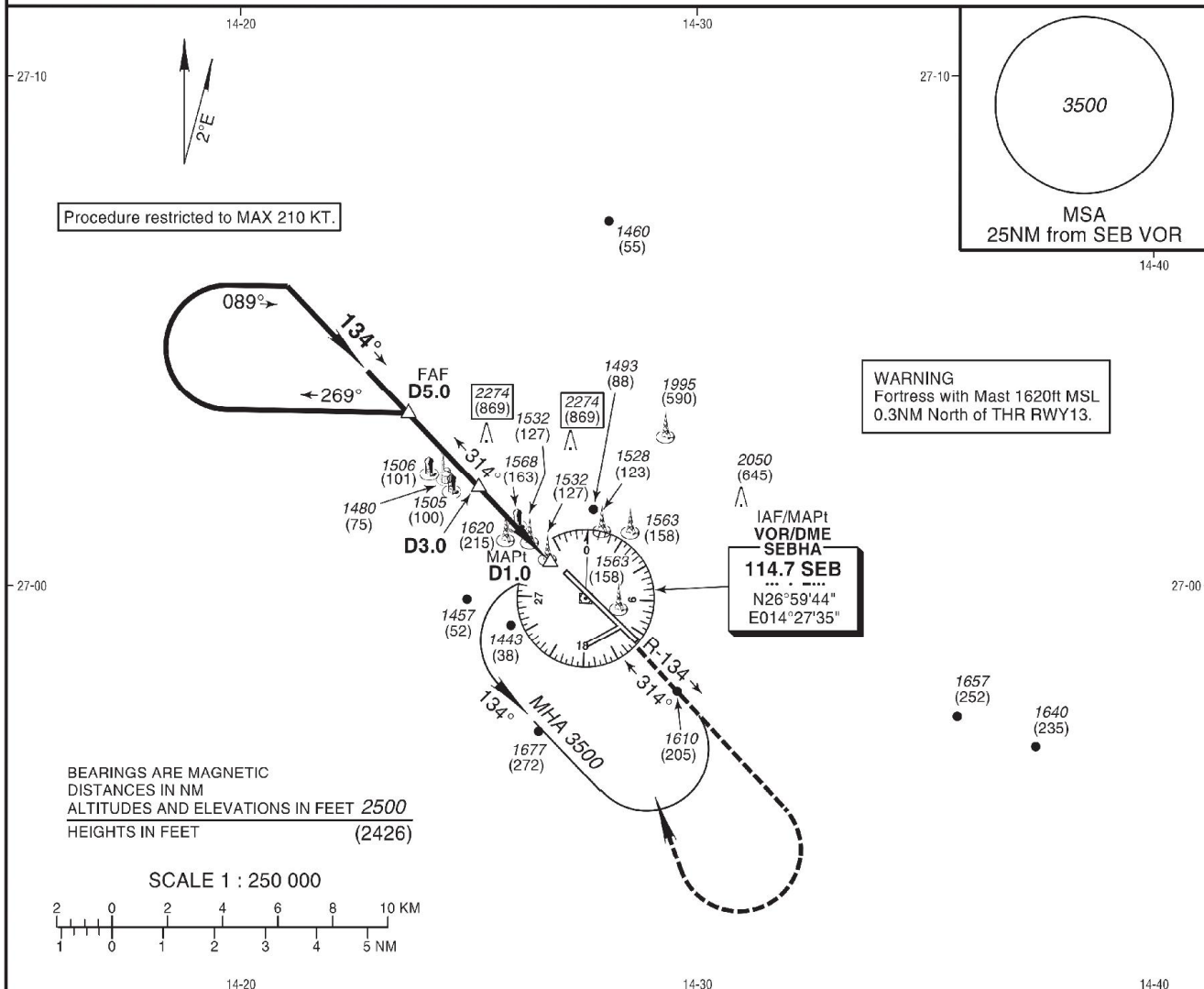
**INTENTIONALLY  
BLANK**

INSTRUMENT  
APPROACH  
CHART - ICAO

AD ELEV 1427 FT  
HEIGHTS RELATED TO  
THR RWY 13 ELEV 1405 FT

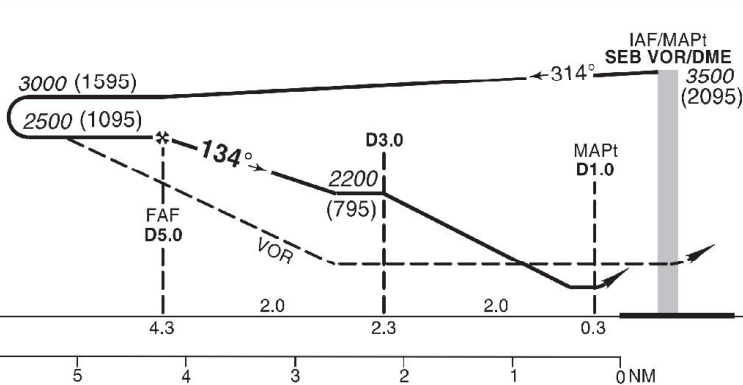
APP 119.100  
TWR 119.100  
GND 121.900

SEBHA, LIBYA  
Sebha Intl  
VOR DME RWY 13



Trans Altitude 5000  
Trans Level FL 70

VOR: Start turn at  
A/B 2 min  
C/D 1 1/2 min



**MISSED APPROACH:**  
Climb STRAIGHT AHEAD  
on R-134 SEB to 3000,  
then climbing turn  
RIGHT to 3500 to SEB  
VOR and hold.

ELEV 1405  
(THR RWY 13)

STRAIGHT-IN APPROACH		A	B	C	D
VOR DME	MDA(H)	1900 (495)			
	VIS	1200		1600	
VOR	MDA(H)	1920 (515)			
	VIS	1600		2000	
CIRCLING (HAA)*	MDA(H)	2300 (873)			
	VIS	1900	2800	3700	4600

\* Not authorized East of airport.

AMENDMENT: New edition.

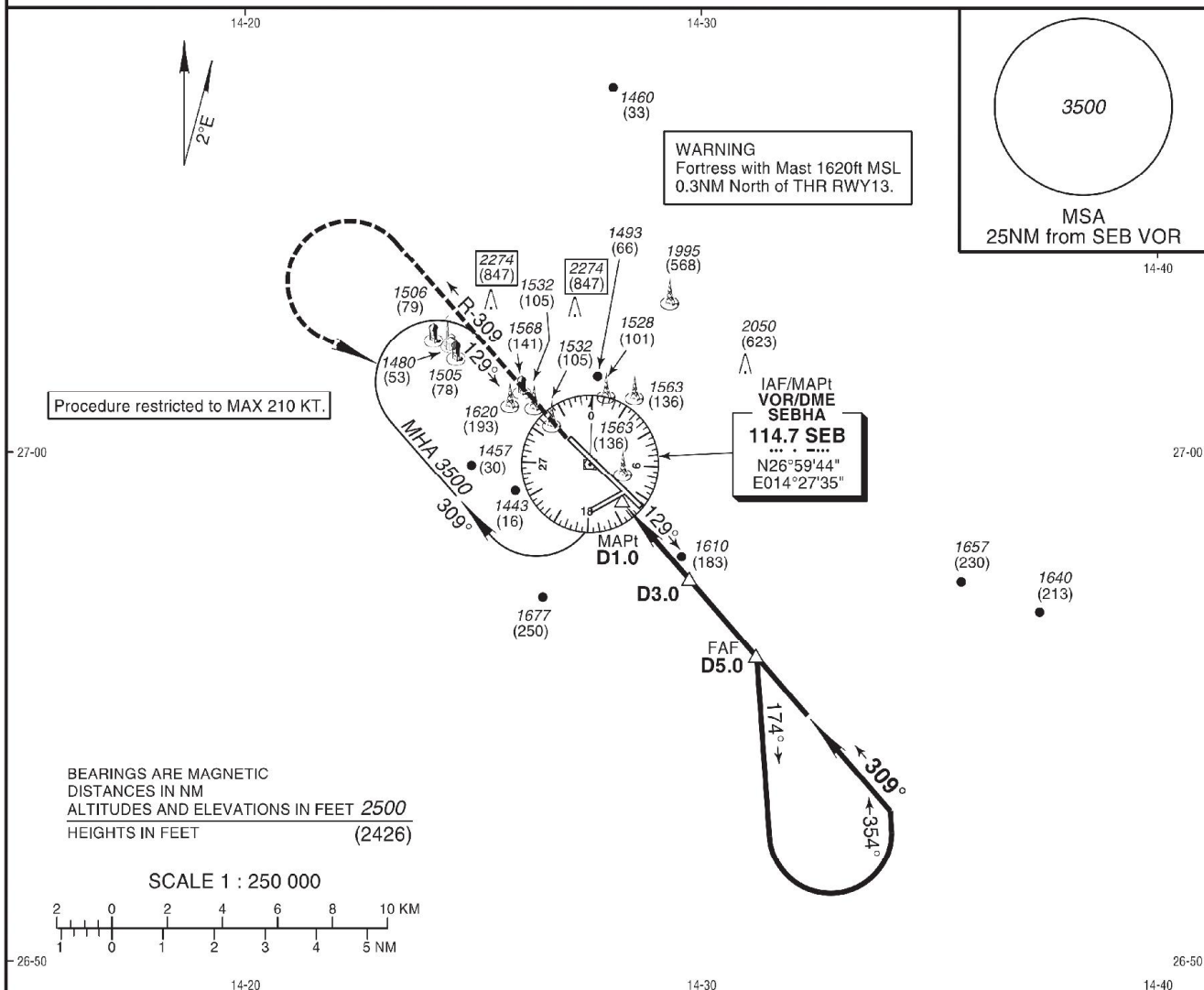
**INTENTIONALLY  
BLANK**

INSTRUMENT  
APPROACH  
CHART - ICAO

AD ELEV 1427 FT  
HEIGHTS RELATED TO  
THR RWY 31 ELEV 1427 FT

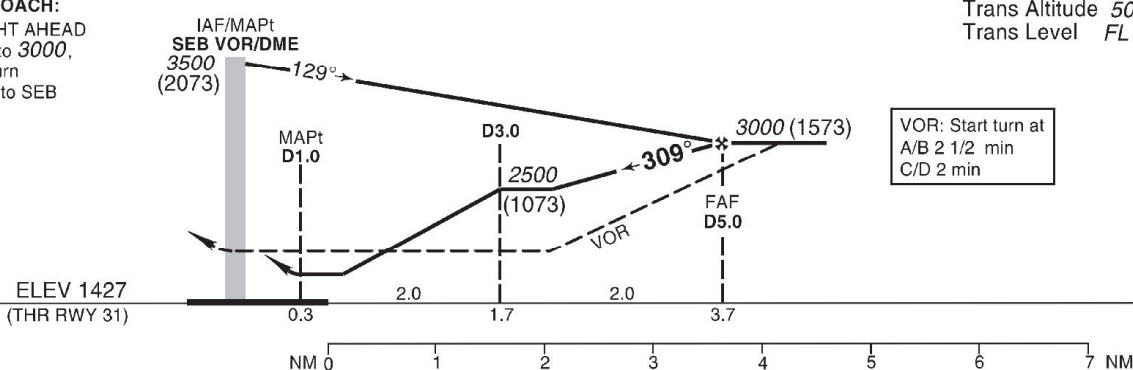
APP 119.100  
TWR 119.100  
GND 121.900

SEBHA, LIBYA  
Sebha Intl  
VOR DME RWY 31



**MISSED APPROACH:**  
Climb STRAIGHT AHEAD  
on R-309 SEB to 3000,  
then climbing turn  
LEFT to 3500 to SEB  
VOR and hold.

Trans Altitude 5000  
Trans Level FL 70



VOR: Start turn at  
A/B 2 1/2 min  
C/D 2 min

STRAIGHT-IN APPROACH		A	B	C	D
VOR DME	MDA(H)	1900 (473)			
	VIS	1200		1600	
VOR	w/o lights	1600		1200	
	MDA(H)	1920 (493)			
VOR	VIS	1600		2000	
	w/o lights	2000		2400	
CIRCLING (HAA)*		A	B	C	D
	MDA(H)	2300 (873)			
	VIS	1900	2800	3700	4600

\* Not authorized East of airport.

AMENDMENT: New edition.

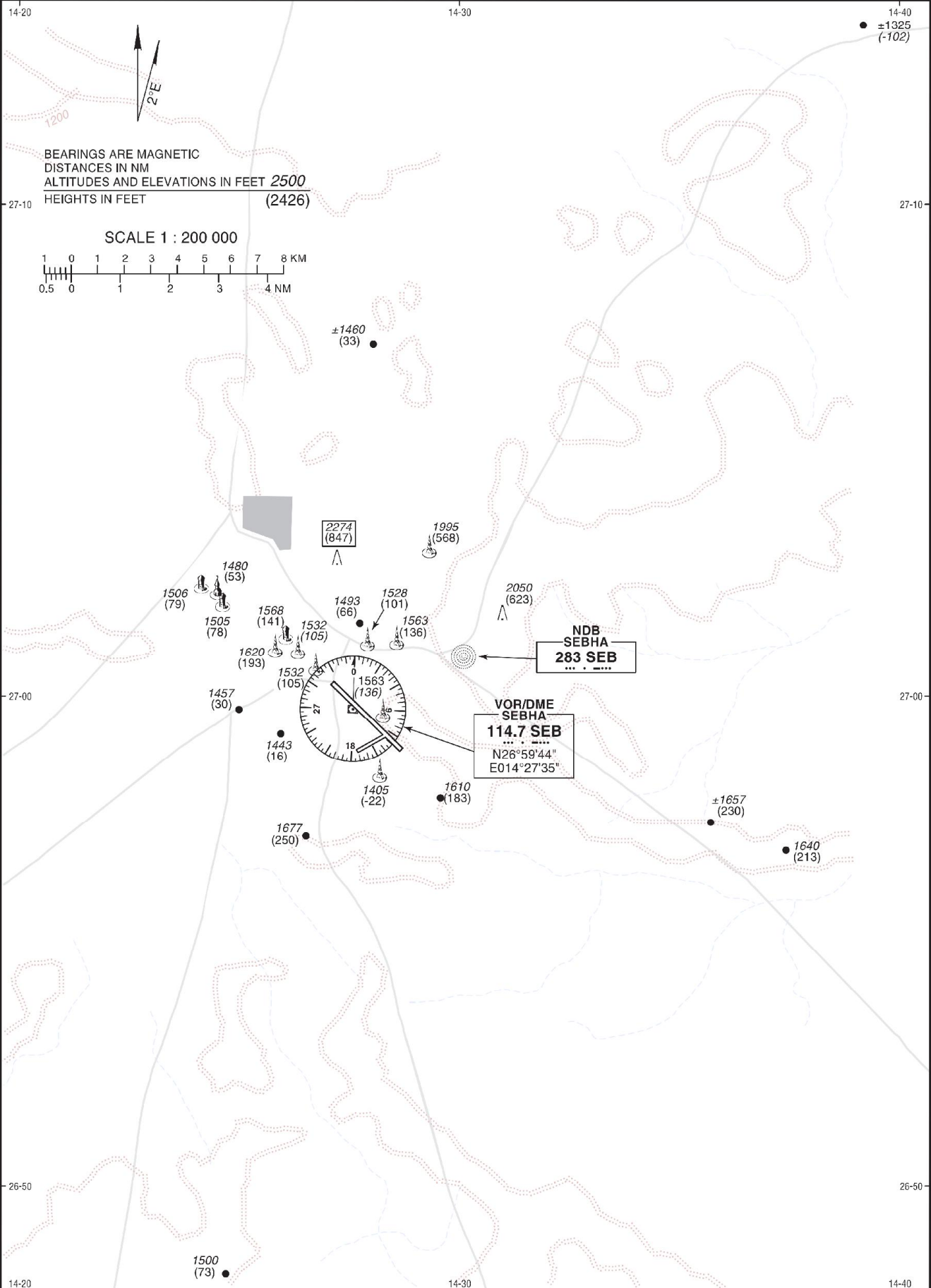
**INTENTIONALLY  
BLANK**

VISUAL  
APPROACH  
CHART - ICAO

WGS 84 AD ELEV 1427 FT

APP	119.100
TWR	119.100
GND	121.900

SEBHA, LIBYA  
Sebha Intl



AMENDMENT: New edition.



**INTENTIONALLY  
BLANK**