

HLLQ AD 2.1 AERODROME LOCATION INDICATOR AND NAME

HLLQ - EL BEIDA / Labraq

HLLQ AD 2.2 AERODROME GEOGRAPHICAL AND ADMINISTRATIVE DATA

1	ARP coordinates and site at AD	N324719 E0215752 (WGS-84)
2	Direction and distance from city	3 km
3	Elevation/Reference temperature	2157 ft
4	Geoid undulation at AD ELEV PSN	Nil
5	MAG VAR/Annual change	2° E (2010)
6	AD Administration, address, telephone, telefax, AFS	00218-69-4637163
7	Types of traffic permitted (IFR/VFR)	IFR / VFR
8	Remarks	Nil

HLLQ AD 2.3 OPERATIONAL HOURS

1	AD Administration	0530-1300
2	Customs and immigration	H24
3	Health and sanitation	H24
4	AIS Briefing Office	H24
5	ATS Reporting Office (ARO)	H24
6	MET Briefing Office	Nil
7	ATS	H24
8	Fuelling	H24
9	Handling	H24
10	Security	H24
11	De-icing	Nil
12	Remarks	Nil

HLLQ AD 2.4 HANDLING SERVICES AND FACILITIES

1	Cargo handling facilities	Nil
2	Fuel/oil types	Jet A1
3	Fuelling facilities/capacity	Nil
4	De-icing facilities	Nil
5	Hangar space for visiting aircraft	Nil
6	Repair facilities for visiting aircraft	Nil
7	Remarks	Nil

HLLQ AD 2.5 PASSENGER FACILITIES

1	Hotels	Available in city
2	Restaurants	Available in city
3	Transportation	Available
4	Medical facilities	Nil
5	Bank and Post Office	In the city
6	Tourist Office	Available
7	Remarks	Nil

HLLQ AD 2.6 RESCUE AND FIRE FIGHTING SERVICES

1	AD category for fire fighting	CAT 7
2	Rescue equipment	Nil
3	Capability for removal of disabled aircraft	Nil
4	Remarks	Nil

HLLQ AD 2.7 SEASONAL AVAILABILITY - CLEARING

1	Types of clearing equipment	Nil
2	Clearance priorities	Nil
3	Remarks	Nil

HLLQ AD 2.8 APRONS, TAXIWAYS AND CHECK LOCATIONS/POSITIONS DATA

1	Apron surface and strength	Nil
2	Taxiway width, surface and strength	Nil
3	Altimeter checkpoint location and elevation	Nil
4	VOR checkpoints	Nil
5	INS checkpoints	Nil
6	Remarks	Nil

HLLQ AD 2.9 SURFACE MOVEMENT GUIDANCE AND CONTROL SYSTEM AND MARKINGS

1	Use of aircraft stand ID signs, TWY guidelines and visual docking/parking guidance system of aircraft stands	Nil
2	RWY and TWY markings and LGT	Nil
3	Stop bars	Nil
4	Remarks	Nil

HLLQ AD 2.10 AERODROME OBSTACLES

In approach/TKOF areas			In circling area and at AD		Remarks
1			2		
RWY NR. Area affected	Obstacle type Elevation Markings/LGT	Coord.	Obstacle type Elevation Markings/LGT	Coord.	Nil
a	b	c	a	b	
Nil	Nil	Nil	Nil	Nil	

HLLQ AD 2.11 METEOROLOGICAL INFORMATION PROVIDED

1	Associated MET Office	Nil
2	Hours of service MET Office outside hours	Nil
3	Office responsible for TAF preparation Periods of validity	Nil
4	Trend forecast Interval of issuance	Nil
5	Briefing/consultation provided	Nil
6	Flight documentation language(s) used	Nil
7	Charts and other information available for briefing or consultation	Nil
8	Supplementary equipment available for providing information	Nil
9	ATS units provided with information	Nil
10	Additional information (limitation of service, etc.)	Nil

HLLQ AD 2.12 RUNWAY PHYSICAL CHARACTERISTICS

Designations RWY NR	TRUE BRG	Dimensions of RWY (m)	Strength (PCN) and surface of RWY and SWY	THR coord. RWY End coord. THR geoid undulation	THR elevation and highest elevation of TDZ of precision APP RWY
1	2	3	4	5	6
03	029°	1959 x 45	Asphalt	N324647.78 E0215730.66	2132 ft
21	209°			N324743.20 E0215807.56	2168 ft
10	103°	3600 x 49	Asphalt	N324739.54 E0215602.70	2157 ft
28	283°			N324714.04 E0215817.70	2157 ft
Designations RWY NR	Slope of RWY - SWY	SWY dimensions (m)	CWY dimensions (m)	Strip dimensions (m)	OFZ
1	7	8	9	10	11
03/21	Nil	Nil	Nil	Nil	Nil
10/28	0 %				
Designations RWY NR	Remarks				
1	12				
03/21	Nil				
10/28	Nil				

HLLQ AD 2.13 DECLARED DISTANCES

RWY Designator	TORA (m)	TODA (m)	ASDA (m)	LDA (m)	Remarks
1	2	3	4	5	6
03/21	1959	1959	1959	1959	Nil
10/28	3600	3600	3600	3600	Nil

HLLQ AD 2.14 APPROACH AND RUNWAY LIGHTING

RWY Designator	APCH LGT Type LEN INTST	THR LGT colour WBAR	VASIS (MEHT) PAPI	TDZ LGT LEN	RWY CL LGT LEN spacing colour INTST	RWY Edge LGT LEN spacing colour INTST	RWY End LGT colour WBAR	SWY LGT LEN colour	Remarks
1	2	3	4	5	6	7	8	9	10
03/21	Nil	Nil	Nil	Nil	Nil	Nil	Nil	Nil	Nil
10/28	ALS Red					Yes 60m			

HLLQ AD 2.15 OTHER LIGHTING, SECONDARY POWER SUPPLY

1	ABN/IBN location, characteristics and hours of operation	Nil
2	LDI location and LGT Anemometer location and LGT	Nil
3	TWY edge and centreline lighting	Nil
4	Secondary power supply/ Switch-over time	Nil
5	Remarks	Nil

HLLQ AD 2.16 HELICOPTER LANDING AREA

Nil

HLLQ AD 2.17 ATS AIRSPACE

1	Designation and lateral limits	Nil
2	Vertical limits	Nil
3	Airspace classification	Nil
4	ATS unit call sign language(s)	Nil
5	Transition altitude/Transition level	5000 / FL70
6	Remarks	Nil

HLLQ AD 2.18 ATS COMMUNICATION FACILITIES

Service designation	Call sign	Frequency	Hours of operation	Remarks
1	2	3	4	5
TWR	El Beida Tower	118.100 MHz	H24	Nil
APP	El Beida Approach	118.100 MHz	H24	Nil
GND	El Beida Ground	123.900 MHz	H24	Nil

HLLQ AD 2.19 RADIO NAVIGATION AND LANDING AIDS

Type of aid, MAG VAR CAT of ILS/MLS (For VOR/ILS/MLS, give declination)	ID	Frequency	Hours of operation	Position of transmitting antenna coordinates	Elevation of DME transmitting antenna	Remarks
1	2	3	4	5	6	7
VOR/DME 2°E	LAQ	116.300 MHz	H24	N324748.84 E0215513.62	2157	Nil
NDB	LAB	392 KHz	H24	N324641.10 E0220112.72	Nil	Nil
ILS RWY 28 (2°E/2010)						
LOC	ILB	109.500 MHz CH 32X	HO	N324741.82 E0215550.52	Nil	Nil
GP	ILB	332.600 MHz	HO	N324720.58 E0215804.44	Nil	Glideslope 3° RDH 50 ft

HLLQ AD 2.20 LOCAL TRAFFIC REGULATIONS

Nil

HLLQ AD 2.21 NOISE ABATEMENT PROCEDURES

Nil

HLLQ AD 2.22 FLIGHT PROCEDURES

Nil

HLLQ AD 2.23 ADDITIONAL INFORMATION

Nil

HLLQ AD 2.24 CHARTS RELATED TO THE AERODROME

AERODROME CHART - ICAO	AD 2 HLLQ-7
INSTRUMENT APPROACH CHART - ICAO - NDB ILS DME RWY 28	AD 2 HLLQ-9
INSTRUMENT APPROACH CHART - ICAO - NDB RWY 10	AD 2 HLLQ-11
INSTRUMENT APPROACH CHART - ICAO - NDB RWY 28	AD 2 HLLQ-13

**INTENTIONALLY
BLANK**

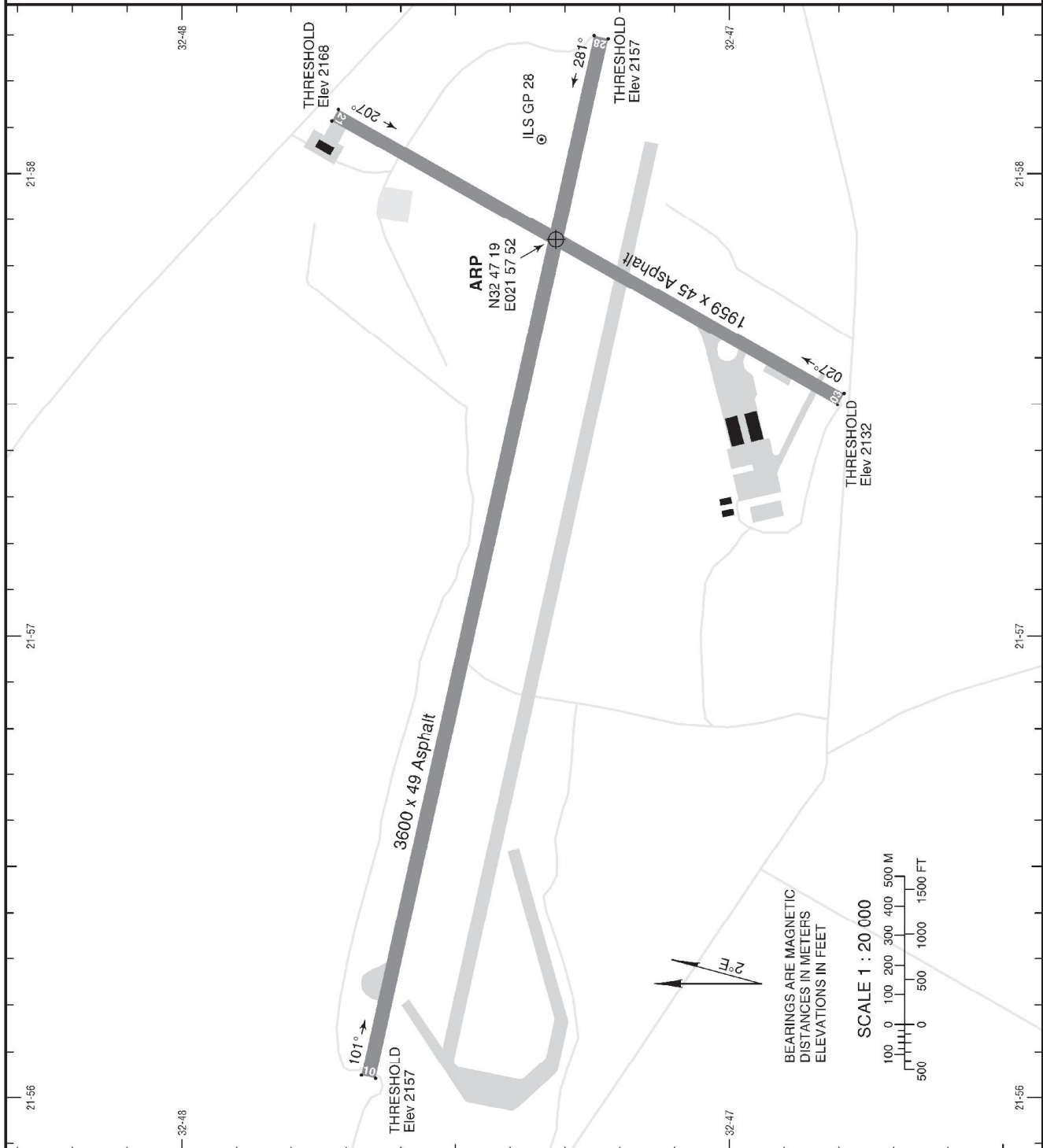
AERODROME
CHART - ICAO

WGS-84

AD ELEV 2157 FT

TWR/APP	118.100
GND	123.900

EL BEIDA, LIBYA
Labraq



RWY	DIRECTION	THRESHOLD	DECLARED DISTANCES				AERODROME LIGHTING
			TORA	TODA	ASDA	LDA	
03	027° MAG	N 32 46 47.78 E 021 57 30.66	1959	1959	1959	1959	Rwy 03/21: NIL
21	207° MAG	N 32 47 43.20 E 021 58 07.56	1959	1959	1959	1959	
10	101° MAG	N 32 47 39.54 E 021 56 02.70	3600	3600	3600	3600	Rwy 10/28: ALS (configuration unknown) REDL
28	281° MAG	N 32 47 14.04 E 021 58 17.70	3600	3600	3600	3600	

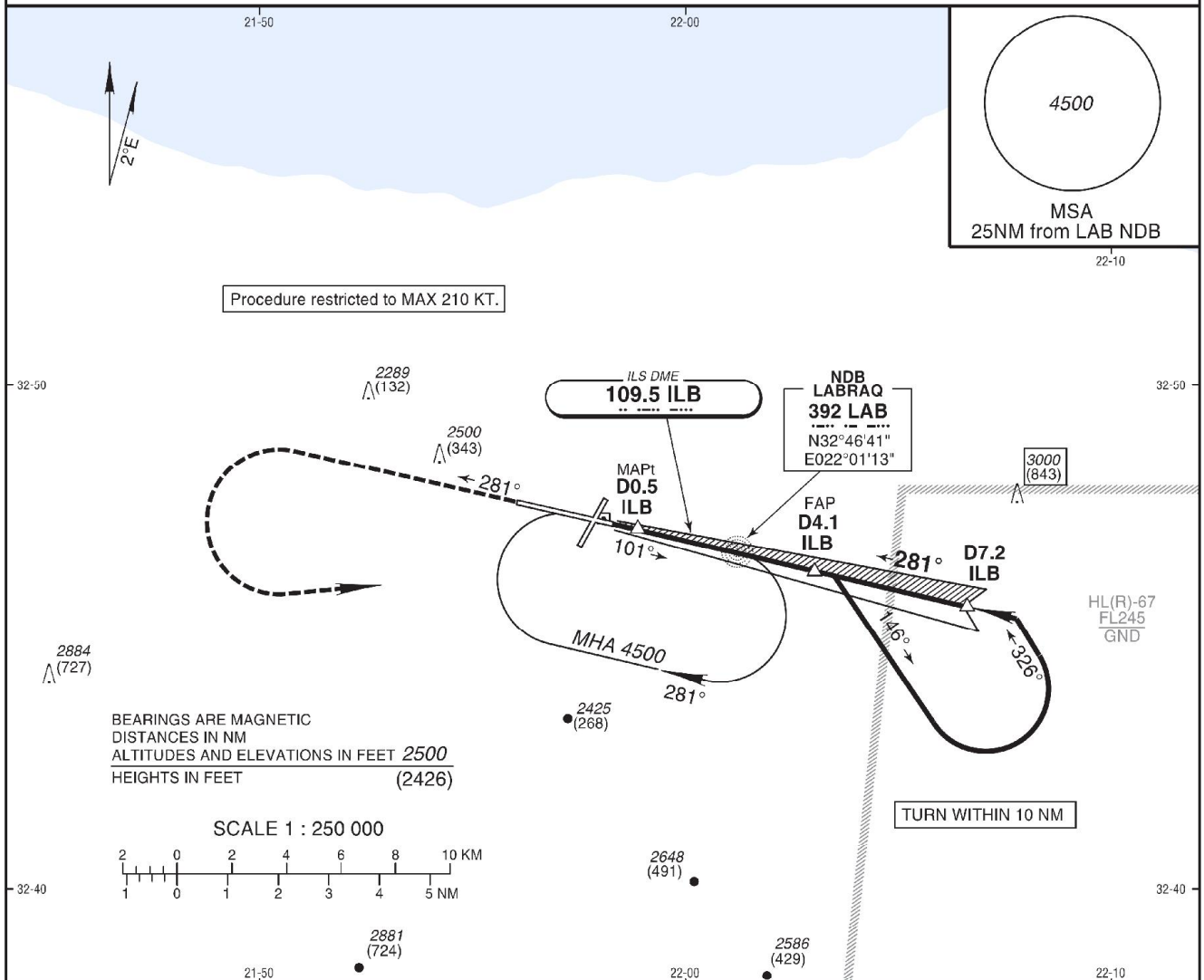
AMENDMENT: Airport layout. Editorial.

**INTENTIONALLY
BLANK**

INSTRUMENT APPROACH CHART - ICAO
AD ELEV 2157 FT
HEIGHTS RELATED TO THR RWY 28 ELEV 2157 FT

APP 118.100
TWR 118.100
GND 123.900

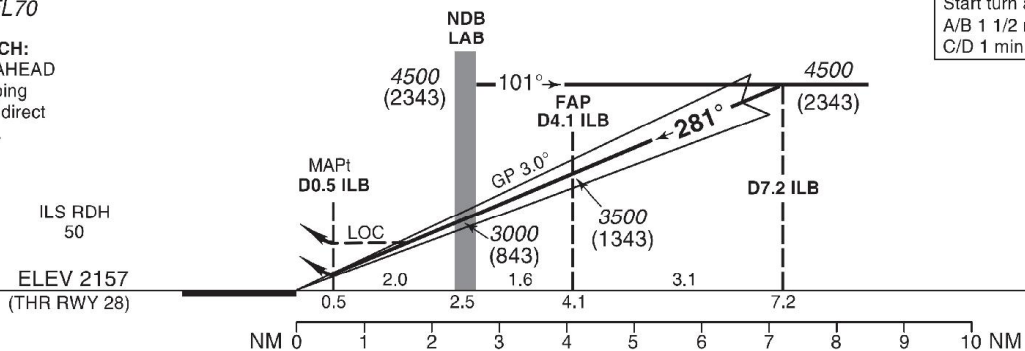
EL BEIDA, LIBYA
Labraq
NDB ILS DME RWY 28



Trans Altitude 5000
Trans Level FL70

MISSED APPROACH:
Climb STRAIGHT AHEAD to 4000, then climbing turn LEFT to 4500 direct LAB NDB and hold.

Start turn at
A/B 1 1/2 min
C/D 1 min



STRAIGHT-IN APPROACH		A	B	C	D
ILS DME	DA(H)	2400 (243)			
	VIS	800		1200	
	w/o lights	1200		1600	
LOC	MDA(H)	2500 (343)			
	VIS	1200		1600	
	w/o lights	1600		2000	
CIRCLING (HAA)*		A	B	C	D
	MDA(H)	3000 (843)			
	VIS	1900	2800	3700	4600

ADVISORY INFORMATION ONLY						
Ground speed kt	70	90	100	120	140	160
ILS GS 3.0° ft/min	377	484	538	646	753	861

Notes:
1. ILS DME reads zero at rwy 28 threshold.
2. ILB LOC/DME 109.5 MHz.

* Not authorized North of airport.

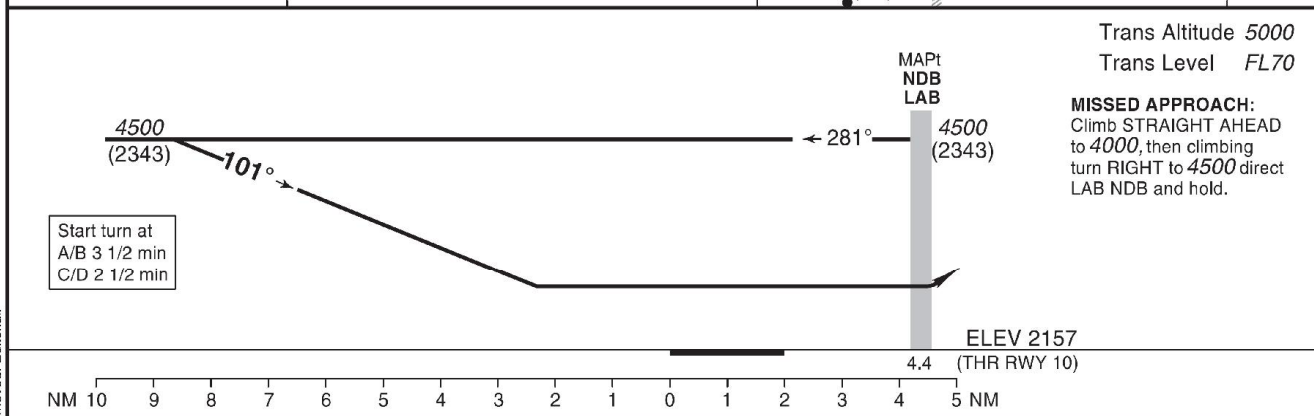
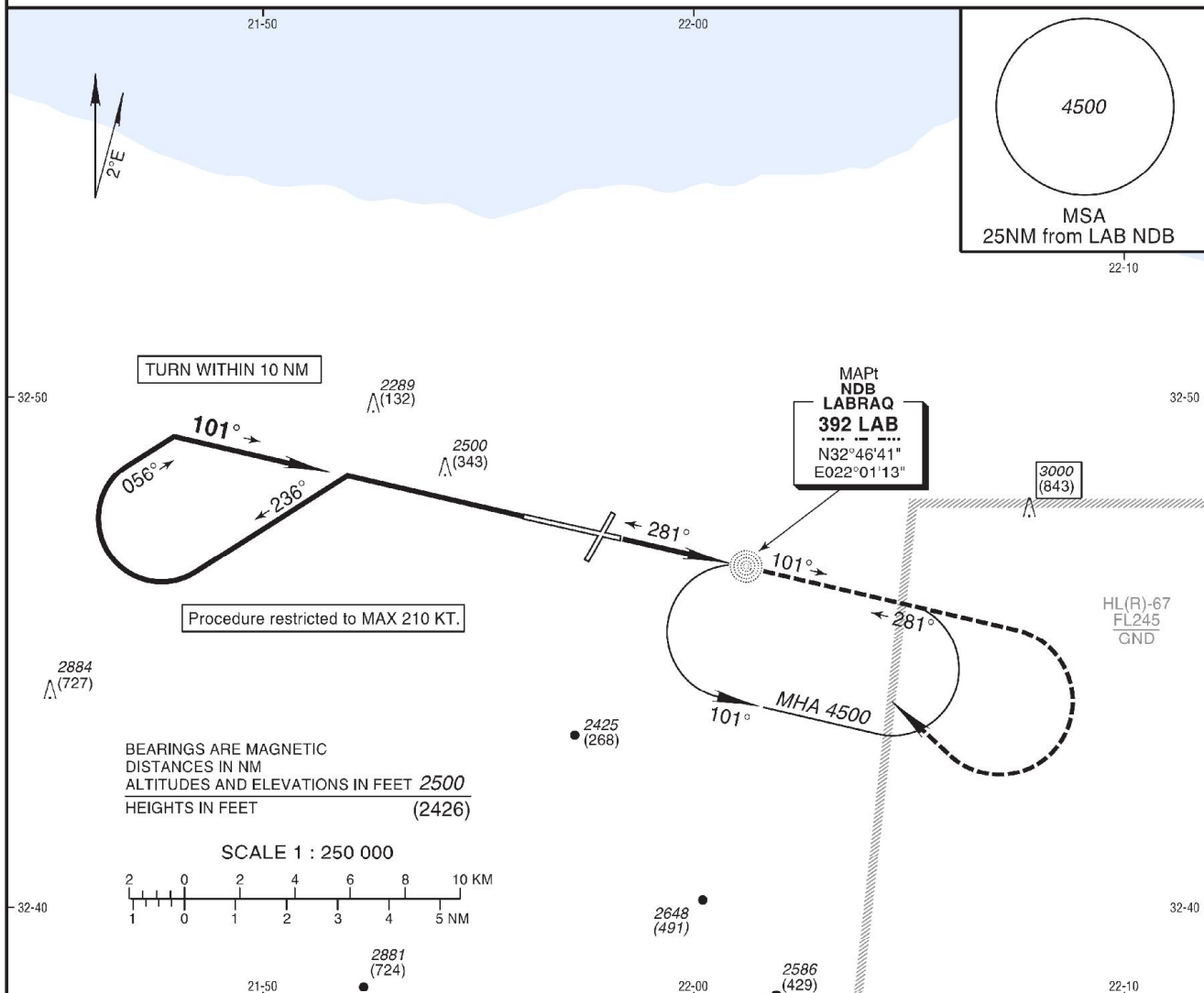
AMENDMENT: Restricted airspace added. Note removed. Editorial.

**INTENTIONALLY
BLANK**

INSTRUMENT APPROACH CHART - ICAO
AD ELEV 2157 FT
HEIGHTS RELATED TO THR RWY 10 ELEV 2157 FT

APP 118.100
TWR 118.100
GND 123.900

EL BEIDA, LIBYA
Labraq
NDB RWY 10



STRAIGHT-IN APPROACH		A	B	C	D
NDB	MDA(H)	2900 (743)			
	VIS	2000		2400	
CIRCLING (HAA)*	w/o lights	2400		2800	
	MDA(H)	A	B	C	D
	VIS	1900	2800	3700	4600

Notes:
1. ILB LOC/DME 109.5 MHz.

* Not authorized North of airport.

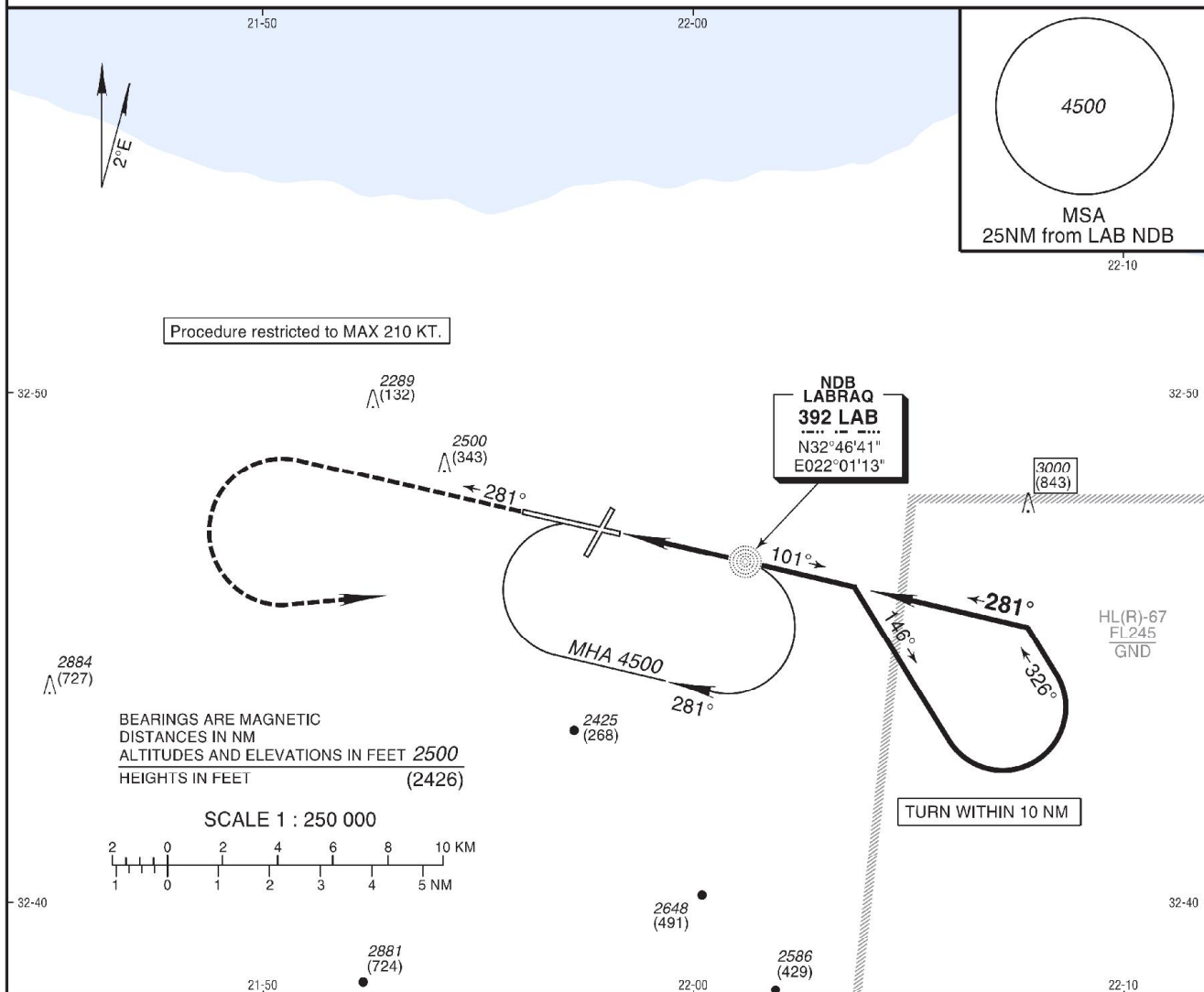
AMENDMENT: Restricted airspace added. Note removed. Editorial.

**INTENTIONALLY
BLANK**

INSTRUMENT APPROACH CHART - ICAO
AD ELEV 2157 FT
HEIGHTS RELATED TO THR RWY 28 ELEV 2157 FT

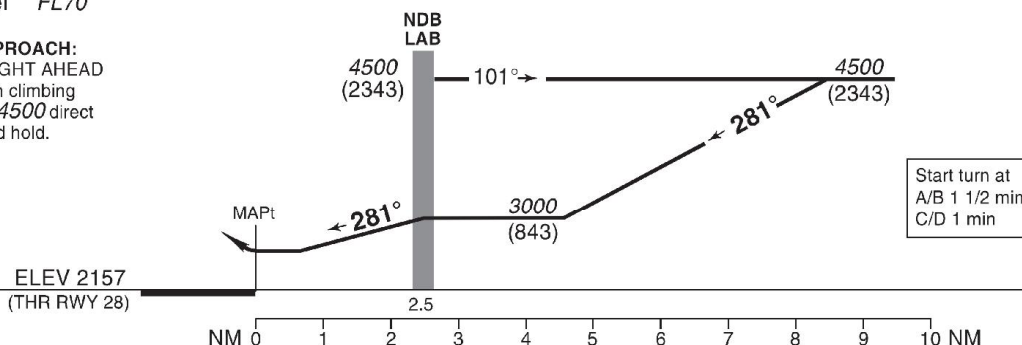
APP 118.100
TWR 118.100
GND 123.900

EL BEIDA, LIBYA
Labraq
NDB RWY 28



Trans Altitude 5000
Trans Level FL70

MISSED APPROACH:
Climb STRAIGHT AHEAD to 4000, then climbing turn LEFT to 4500 direct LAB NDB and hold.



STRAIGHT-IN APPROACH		A	B	C	D
NDB	MDA(H)	2600 (443)			
	VIS	2000		2400	
CIRCLING (HAA)*		A	B	C	D
		3000 (843)			
		1900	2800	3700	4600

ADVISORY INFORMATION ONLY							
		Ground speed kt					
		70	90	100	120	140	160
NDB to MAPt (2.5 NM) min		2:09	1:40	1:30	1:15	1:04	0:56
Notes: 1. ILB LOC/DME 109.5 MHz.							

* Not authorized North of airport.

AMENDMENT: Restricted airspace added. Note removed. Editorial.

**INTENTIONALLY
BLANK**