

HLTD AD 3.1 AERODROME LOCATION INDICATOR AND NAME

HLTD - GHADAMES / Ghadames

HLTD AD 3.2 AERODROME GEOGRAPHICAL AND ADMINISTRATIVE DATA

1	ARP coordinates and site at AD	N300906.00 E0094255.20 (WGS-84)
2	Direction and distance from city	19 km east of Ghadames
3	Elevation/Reference temperature	1122 ft / 33.3° C
4	Geoid undulation at AD ELEV PSN	Nil
5	MAG VAR/Annual change	1.4° E (2012)
6	AD Administration, address, telephone, telefax, AFS	Civil Aviation Authority Airport Director Ghadames Tel: 00218-484-3330652 00218-484-62084 AFTN: HLTDYDYX, HLTDTZTX Tel: 00218-484-305449
7	Types of traffic permitted (IFR/VFR)	IFR / VFR
8	Remarks	Nil

HLTD AD 3.3 OPERATIONAL HOURS

1	AD Administration	SR-SS
2	Customs and immigration	Nil
3	Health and sanitation	Nil
4	AIS Briefing Office	Nil
5	ATS Reporting Office (ARO)	Nil
6	MET Briefing Office	SR-SS
7	ATS	SR-SS
8	Fuelling	SR-SS
9	Handling	SR-SS
10	Security	SR-SS
11	De-icing	Nil
12	Remarks	Night operation on request

HLTD AD 3.4 HANDLING SERVICES AND FACILITIES

1	Cargo handling facilities	Nil
2	Fuel Oil types	Jet A1 Nil
3	Fuelling facilities/capacity	Nil
4	De-icing facilities	Nil
5	Hangar space for visiting aircraft	Nil
6	Repair facilities for visiting aircraft	Nil
7	Remarks	Nil

HLTD AD 3.5 PASSENGER FACILITIES

1	Hotels	In town only
2	Restaurants	In town only
3	Transportation	Taxis
4	Medical facilities	Full facilities and hospital in Ghadames
5	Bank and Post Office	In town only
6	Tourist Office	In town only
7	Remarks	Nil

HLTD AD 3.6 RESCUE AND FIRE FIGHTING SERVICES

1	AD category for fire fighting	Nil
2	Rescue equipment	Nil
3	Capability for removal of disabled aircraft	Nil
4	Remarks	Nil

HLTD AD 3.7 SEASONAL AVAILABILITY - CLEARING

1	Types of clearing equipment	Nil
2	Clearance priorities	Nil
3	Remarks	Nil

HLTD AD 3.8 APRONS, TAXIWAYS AND CHECK LOCATIONS/POSITIONS DATA

1	Apron surface and strength	Concrete (32 cm thickness), LCN 100
2	Taxiway width, surface and strength	30 m, Asphalt/Concrete, LCN 100
3	Altimeter checkpoint location and elevation	Nil
4	VOR checkpoints	Nil
5	INS checkpoints	Nil
6	Remarks	Nil

HLTD AD 3.9 SURFACE MOVEMENT GUIDANCE AND CONTROL SYSTEM AND MARKINGS

1	Use of aircraft stand ID signs, TWY guidelines and visual docking/parking guidance system of aircraft stands	Taxiing guidance system Yellow centreline and dual yellow side stripes
2	RWY and TWY markings and LGT	Available
3	Stop bars	Calvert RED
4	Remarks	Nil

HLTD AD 3.10 AERODROME OBSTACLES

In approach/TKOF areas			In circling area and at AD		Remarks
1			2		
RWY NR. Area affected	Obstacle type Elevation Markings/LGT	Coord.	Obstacle type Elevation Markings/LGT	Coord.	Avoid overflying international borders west of airport
a	b	c	a	b	
Nil	Nil	Nil	Nil	Nil	

HLTD AD 3.11 METEOROLOGICAL INFORMATION PROVIDED

1	Associated MET Office	Nil
2	Hours of service MET Office outside hours	Nil
3	Office responsible for TAF preparation Periods of validity	Nil
4	Trend forecast Interval of issuance	Nil
5	Briefing/consultation provided	Nil
6	Flight documentation language(s) used	Nil
7	Charts and other information available for briefing or consultation	Nil
8	Supplementary equipment available for providing information	Nil
9	ATS units provided with information	Nil
10	Additional information (limitation of service, etc.)	Nil

HLTD AD 3.12 RUNWAY PHYSICAL CHARACTERISTICS

Designations RWY NR	TRUE BRG	Dimensions of RWY (m)	Strength (PCN) and surface of RWY and SWY	THR coord. RWY end coord. THR geoid undulation	THR elevation and highest elevation of TDZ of precision APP RWY
1	2	3	4	5	6
01	Nil	1600 x 30	PCN 30	Nil	Nil
19	Nil			Nil	Nil
06	063°	3600 x 45	PCN 90	N300821.84 E0094114.94	THR 1151 ft
24	243°			N300915.36 E0094314.70	THR 1161 ft
Designations RWY NR	Slope of RWY - SWY	SWY dimensions (m)	CWY dimensions (m)	Strip dimensions (m)	OFZ
1	7	8	9	10	11
01	Nil	Nil	Nil	Nil	Nil
19	Nil	Nil	Nil	Nil	Nil
06	Nil	300 x 60	300 x 60	4200 x 300	Nil
24	Nil	300 x 60	300 x 60		Nil
Designations RWY NR	Remarks				
1	12				
01/19	Nil				
06/24	Nil				

HLTD AD 3.13 DECLARED DISTANCES

RWY Designator	TORA (m)	TODA (m)	ASDA (m)	LDA (m)	Remarks
1	2	3	4	5	6
01	1600	1600	1600	1600	Nil
19	1600	1600	1600	1600	Nil
06	3600	3900	3900	3600	Nil
24	3600	3900	3900	3600	Nil

HLTD AD 3.14 APPROACH AND RUNWAY LIGHTING

RWY Designator	APCH LGT Type LEN INTST	THR LGT colour WBAR	VASIS (MEHT) PAPI	TDZ LGT LEN	RWY CL LGT LEN spacing colour INTST	RWY Edge LGT LEN spacing colour INTST	RWY End LGT colour WBAR	SWY LGT LEN colour	Remarks
1	2	3	4	5	6	7	8	9	10
01	Nil	Nil	Nil	Nil	Nil	Nil	Nil	Nil	Nil
19	Nil	Nil	Nil	Nil	Nil	Nil	Nil	Nil	Nil
06	SALS	Nil	Nil	Nil	Nil	Nil	Nil	Nil	Nil
24	SALS	Nil	Nil	Nil	Nil	Nil	Nil	Nil	Nil

HLTD AD 3.15 OTHER LIGHTING, SECONDARY POWER SUPPLY

1	ABN/IBN location, characteristics and hours of operations	ABN on Control Tower flashing green/white When request night operation only
2	LDI location and LGT Anemometer location and LGT	Nil
3	TWY edge and centreline lighting	Taxiway edge lights: White Centreline lights: Nil
4	Secondary power supply/ Switch-over time	Nil
5	Remarks	Nil

HLTD AD 3.16 HELICOPTER LANDING AREA

Location: Western side of technical Apron
150 x 150 m
Surface: concrete 20 cm thick.

HLTD AD 3.17 ATS AIRSPACE

1	Designation and lateral limits	Nil
2	Vertical limits	Nil
3	Airspace classification	Nil
4	ATS unit call sign language(s)	Ghadames Tower English
5	Transition altitude/Transition level	5000 ft / FL70
6	Remarks	Nil

HLTD AD 3.18 ATS COMMUNICATION FACILITIES

Service designation	Call sign	Frequency	Hours of operation	Remarks
1	2	3	4	5
APP	Ghadames Approach	118.100 MHz	HO	Night operation on request
TWR	Ghadames Tower	119.100 MHz	HO	
GND	Ghadames Ground	121.900 MHz	HO	

HLTD AD 3.19 RADIO NAVIGATION AND LANDING AIDS

Type of aid, MAG VAR CAT of ILS/MLS (For VOR/ILS/MLS, give declination)	ID	Frequency	Hours of operation	Position of transmitting antenna coordinates	Elevation of DME transmitting antenna	Remarks
1	2	3	4	5	6	7
VOR/DME 1°E	GAD	115.800 MHz	H24	N300949 E0094429	1110 ft	Nil
NDB	GAD	287 KHz	H24	N301002 E0094451	Nil	Nil

HLTD AD 3.20 LOCAL TRAFFIC REGULATIONS**20.1 Airport regulations**

General:

Aerodrome restricted to aircraft capable of maintaining two-way radio communications with ATC.

20.2 Taxiing to and from stands

a) Arriving flights will be allocated a stand number by the ground controller and assistance from "FOLLOW ME" vehicle can be requested via the ground controller.

b) Departing IFR flights shall contact TWR to obtain ATC clearance before commencing taxiing.

20.3 Parking area for small aircraft (General Aviation)

General aviation aircraft shall not be guided by marshallers to the parking area for small aircraft.

20.4 Parking area for helicopters

As directed by ATC.

20.5 Apron - taxiing during winter conditions

Not applicable.

20.6 Taxiing limitations

Nil.

20.7 School and training flights - technical test flights - use of runways

Nil.

20.8 Helicopter traffic - limitation

Nil.

20.9 Removal of disabled aircraft from runways

When an aircraft is wrecked on a runway, it is the duty of the owner or user of such aircraft to have it removed as soon as possible. If a wrecked aircraft is not removed from the runway as quickly as possible by the owner or user, the aircraft will be removed by the aerodrome authority at the owner's or user's expense.

HLTD AD 3.21 NOISE ABATEMENT PROCEDURES

Non Noise Certificated subsonic airplane (NNC) operations restricted daily between sunset and sunrise.

HLTD AD 3.22 FLIGHT PROCEDURES

Nil

HLTD AD 3.23 ADDITIONAL INFORMATION

Nil

HLTD AD 3.24 CHARTS RELATED TO THE AERODROME

AERODROME CHART - ICAO	AD 3 HLTD-7
INSTRUMENT APPROACH CHART - ICAO - VOR DME RWY 06	AD 3 HLTD-9
INSTRUMENT APPROACH CHART - ICAO - VOR DME RWY 24	AD 3 HLTD-11
INSTRUMENT APPROACH CHART - ICAO - NDB RWY 06	AD 3 HLTD-13
INSTRUMENT APPROACH CHART - ICAO - NDB RWY 24	AD 3 HLTD-15

**INTENTIONALLY
BLANK**

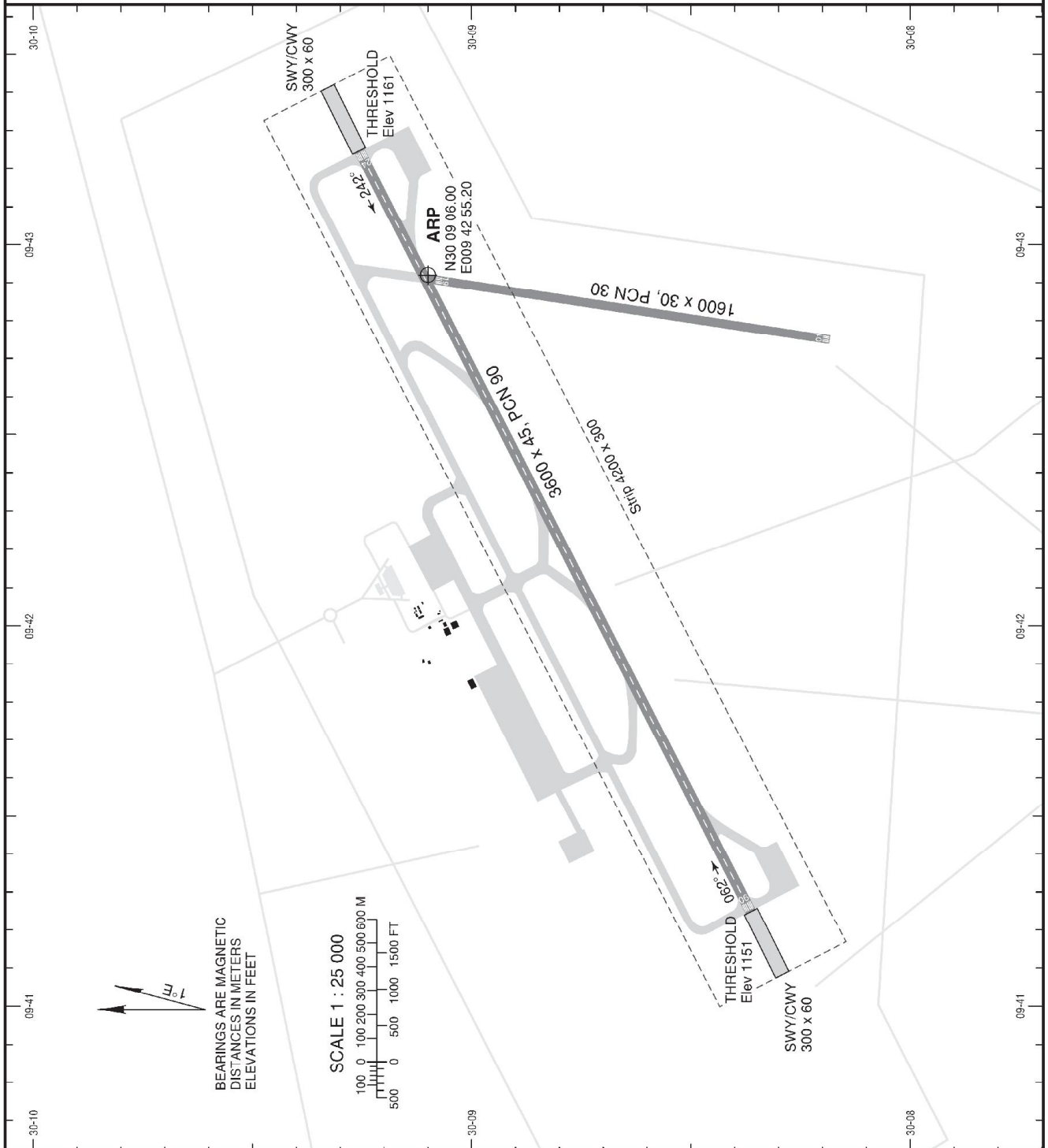
AERODROME
CHART - ICAO

WGS-84

AD ELEV 1122 FT

TWR	119.100
GND	121.900

GHADAMES, LIBYA
GHADAMES



RWY	DIRECTION	THRESHOLD	DECLARED DISTANCES				AERODROME LIGHTING
			TORA	TODA	ASDA	LDA	
01			1600	1600	1600	1600	Rwy 01/19: Nil
19			1600	1600	1600	1600	Rwy 06/24: SALS
06	062° MAG	N 30 08 21.84 E 009 41 14.94	3600	3900	3900	3600	
24	242° MAG	N 30 09 15.36 E 009 43 14.70	3600	3900	3900	3600	

AMENDMENT: New edition.

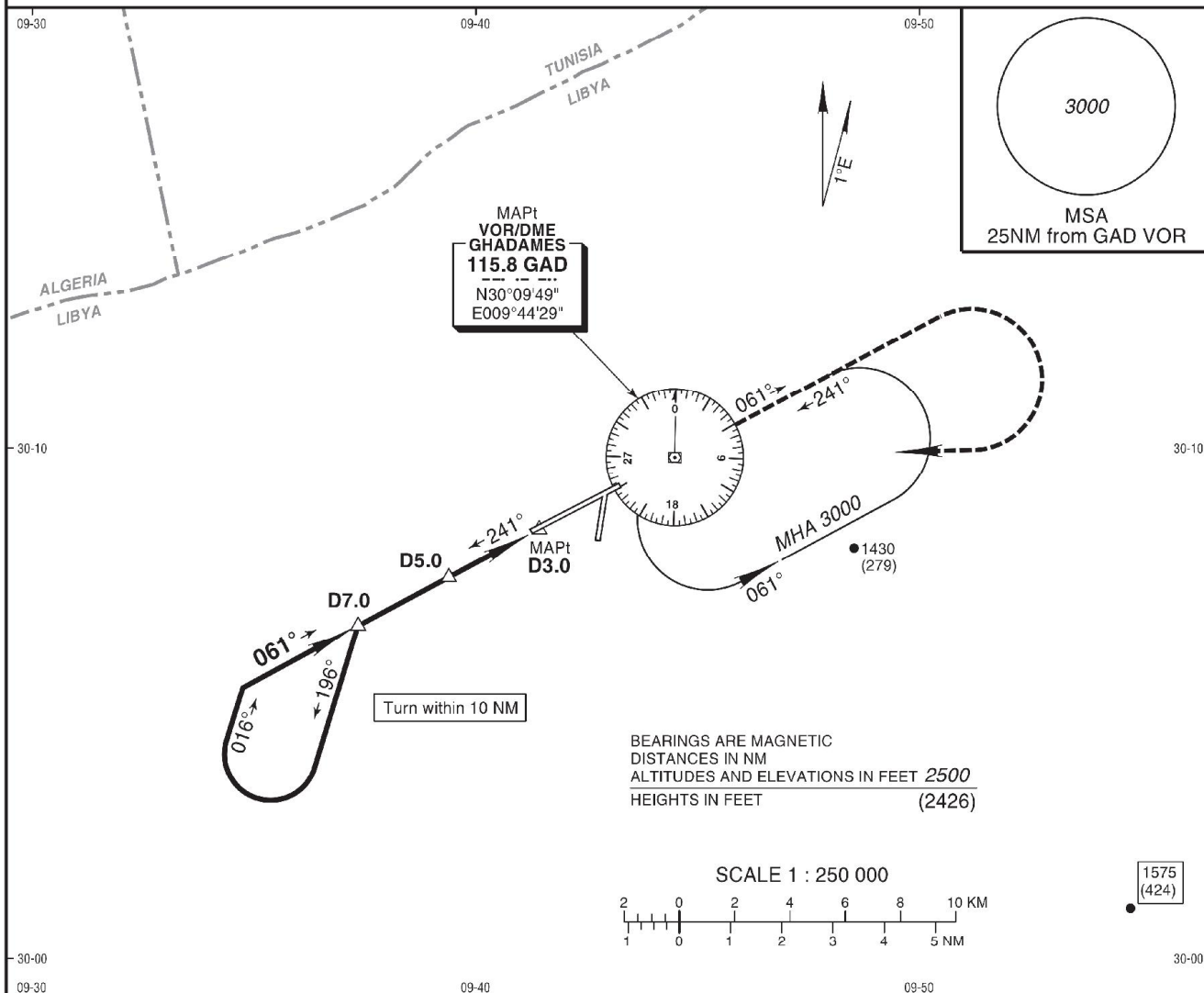
**INTENTIONALLY
BLANK**

INSTRUMENT
APPROACH
CHART - ICAO

AD ELEV 1122 FT
HEIGHTS RELATED TO
THR RWY 06 ELEV 1151 FT

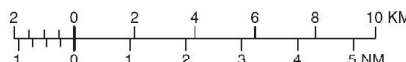
APP 118.100
TWR 119.100
GND 121.900

GHADAMES, LIBYA
Ghadames
VOR DME RWY 06

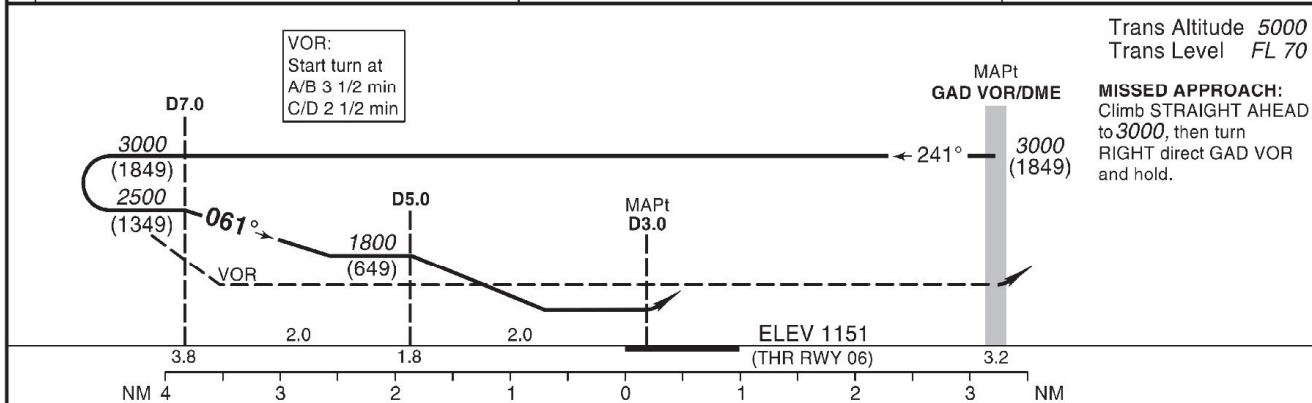


BEARINGS ARE MAGNETIC
DISTANCES IN NM
ALTITUDES AND ELEVATIONS IN FEET 2500
HEIGHTS IN FEET (2426)

SCALE 1 : 250 000



1575
(424)



VOR:
Start turn at
A/B 3 1/2 min
C/D 2 1/2 min

Trans Altitude 5000
Trans Level FL 70

MISSED APPROACH:
Climb STRAIGHT AHEAD
to 3000, then turn
RIGHT direct GAD VOR
and hold.

STRAIGHT-IN APPROACH		A	B	C	D
VOR DME	MDA(H)	1500 (349)			
	VIS	1200		1600	
	w/o lights	1600		2000	
VOR	MDA(H)	1700 (549)			
	VIS	1600		2000	
	w/o lights	2000		2400	
CIRCLING (HAT)		A	B	C	D
	MDA(H)	2000 (849)			2500 (1349)
	VIS	1900	2800	3700	4600

Notes:
1. Procedure restricted to MAX 210 KT.
2. CAUTION: Avoid overflying international borders Northwest of Airport.

AMENDMENT: New edition.

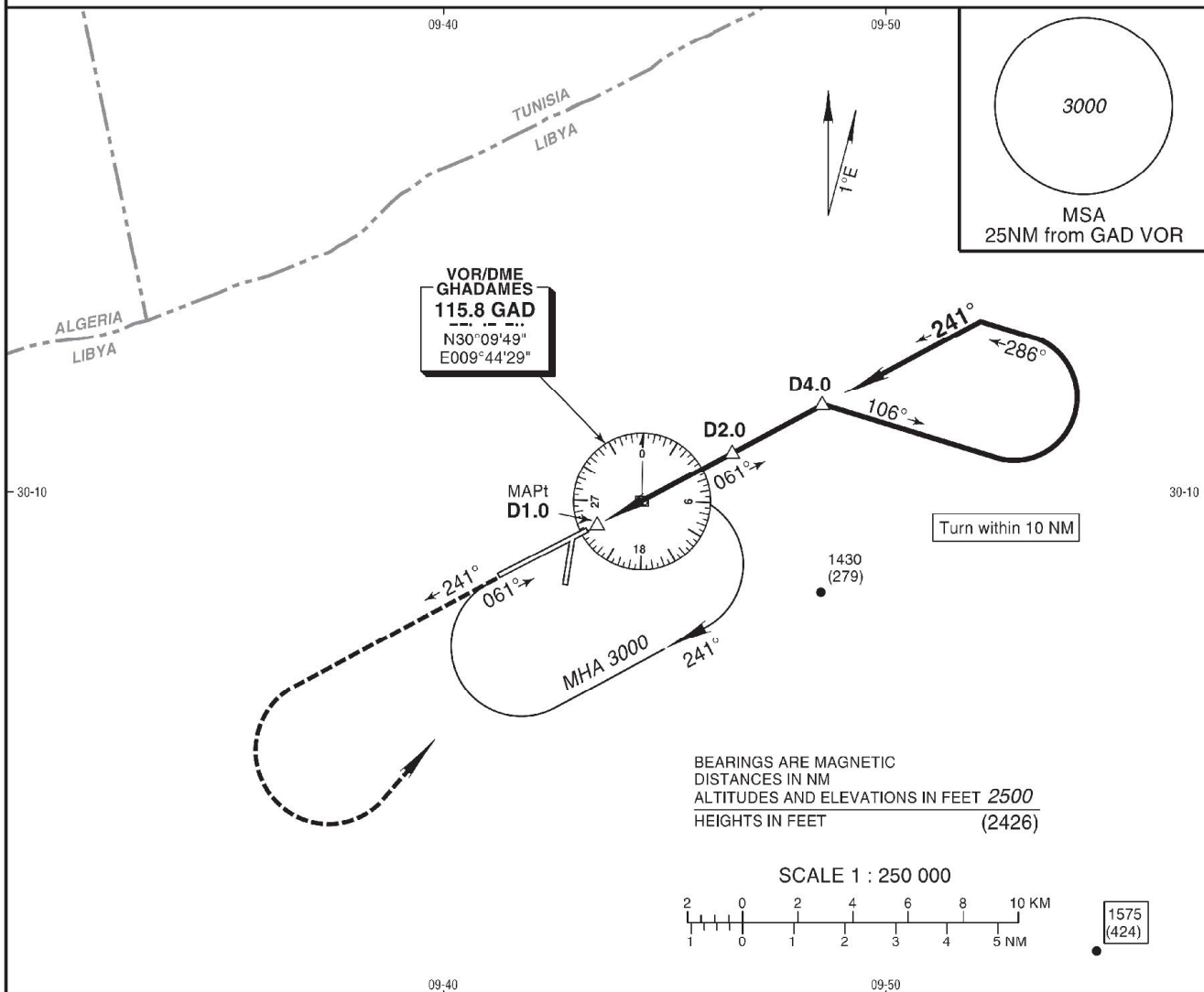
**INTENTIONALLY
BLANK**

INSTRUMENT
APPROACH
CHART - ICAO

AD ELEV 1122 FT
HEIGHTS RELATED TO
THR RWY 24 ELEV 1161 FT

APP 118.100
TWR 119.100
GND 121.900

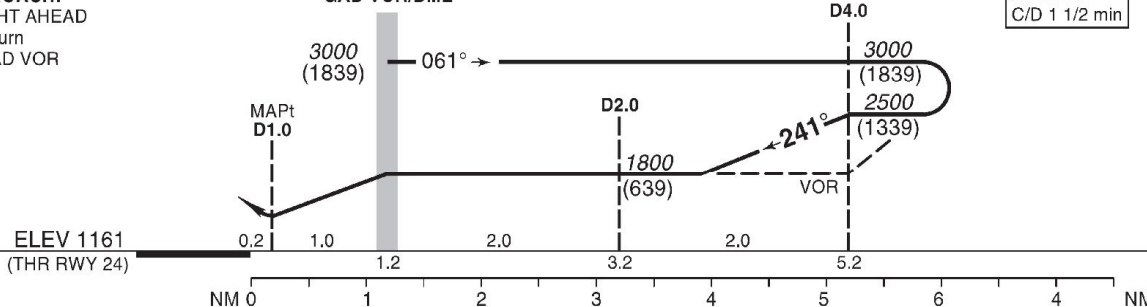
GHADAMES, LIBYA
Ghadames
VOR DME RWY 24



Trans Altitude 5000
Trans Level FL 70

MISSED APPROACH:
Climb STRAIGHT AHEAD
to 3000, then turn
LEFT direct GAD VOR
and hold.

GAD VOR/DME



VOR:
Start turn at
A/B 2 min
C/D 1 1/2 min

STRAIGHT-IN APPROACH		A	B	C	D	ADVISORY INFORMATION ONLY						
VOR DME	MDA(H)	1450 (289)				VOR to MAPt 1.0NM						
	VIS	1200		1600		kt	70	90	100	120	140	160
	w/o lights	1600		2000		min:sec	0:51	0:40	0:36	0:30	0:26	0:23
VOR	MDA(H)	1475 (314)				Notes: 1. Procedure restricted to MAX 210 KT. 2. CAUTION: Avoid overflying international borders Northwest of Airport.						
	VIS	1600		2000								
	w/o lights	2000		2400								
CIRCLING (HAT)		A	B	C	D							
	MDA(H)	2000 (839)			2500 (1339)							
	VIS	1900	2800	3700	4600							

AMENDMENT: New edition.

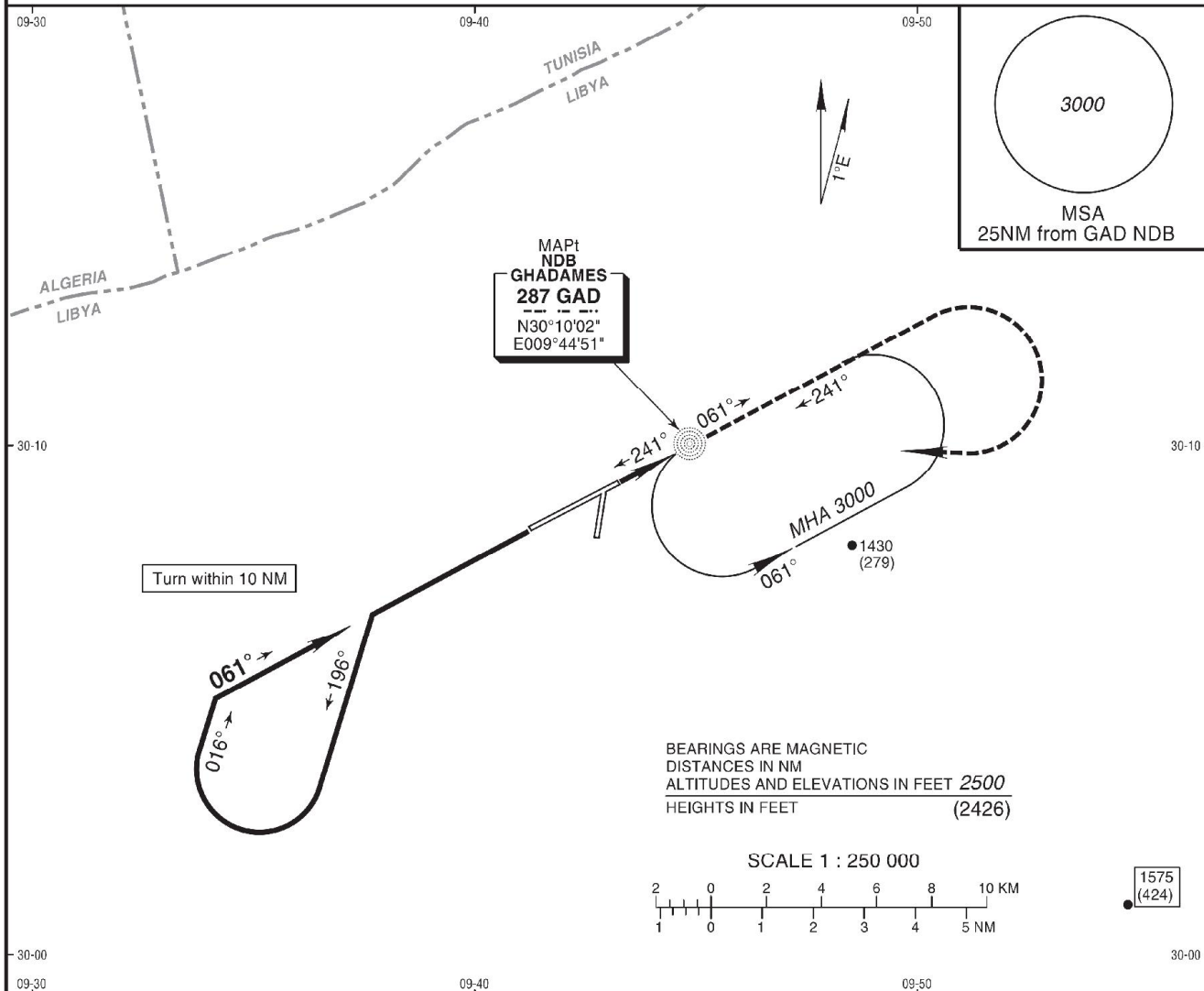
**INTENTIONALLY
BLANK**

INSTRUMENT
APPROACH
CHART - ICAO

AD ELEV 1122 FT
HEIGHTS RELATED TO
THR RWY 06 ELEV 1151 FT

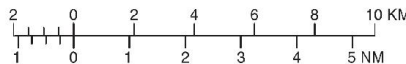
APP 118.100
TWR 119.100
GND 121.900

GHADAMES, LIBYA
Ghadames
NDB RWY 06



BEARINGS ARE MAGNETIC
DISTANCES IN NM
ALTITUDES AND ELEVATIONS IN FEET 2500
HEIGHTS IN FEET (2426)

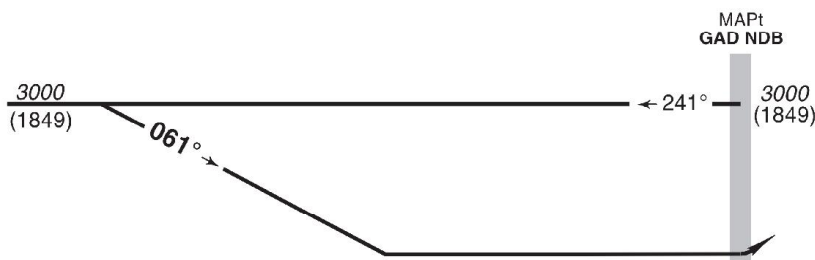
SCALE 1 : 250 000



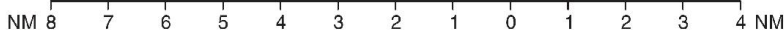
NDB:
Start turn at
A/B 3 1/2 min
C/D 2 1/2 min

Trans Altitude 5000
Trans Level FL 70

MISSED APPROACH:
Climb STRAIGHT AHEAD
to 3000, then turn
RIGHT direct GAD NDB
and hold.



ELEV 1151
(THR RWY 06)



STRAIGHT-IN APPROACH		A	B	C	D
NDB	MDA(H)	1800 (649)			
	VIS	2000		2400	
	w/o lights	2400		2800	
CIRCLING (HAT)		A	B	C	D
	MDA(H)	2000 (849)			2500 (1349)
	VIS	1900	2800	3700	4600

Notes:
1. Procedure restricted to MAX 210 KT.
2. CAUTION: Avoid overflying international borders Northwest of Airport.

AMENDMENT: New edition.

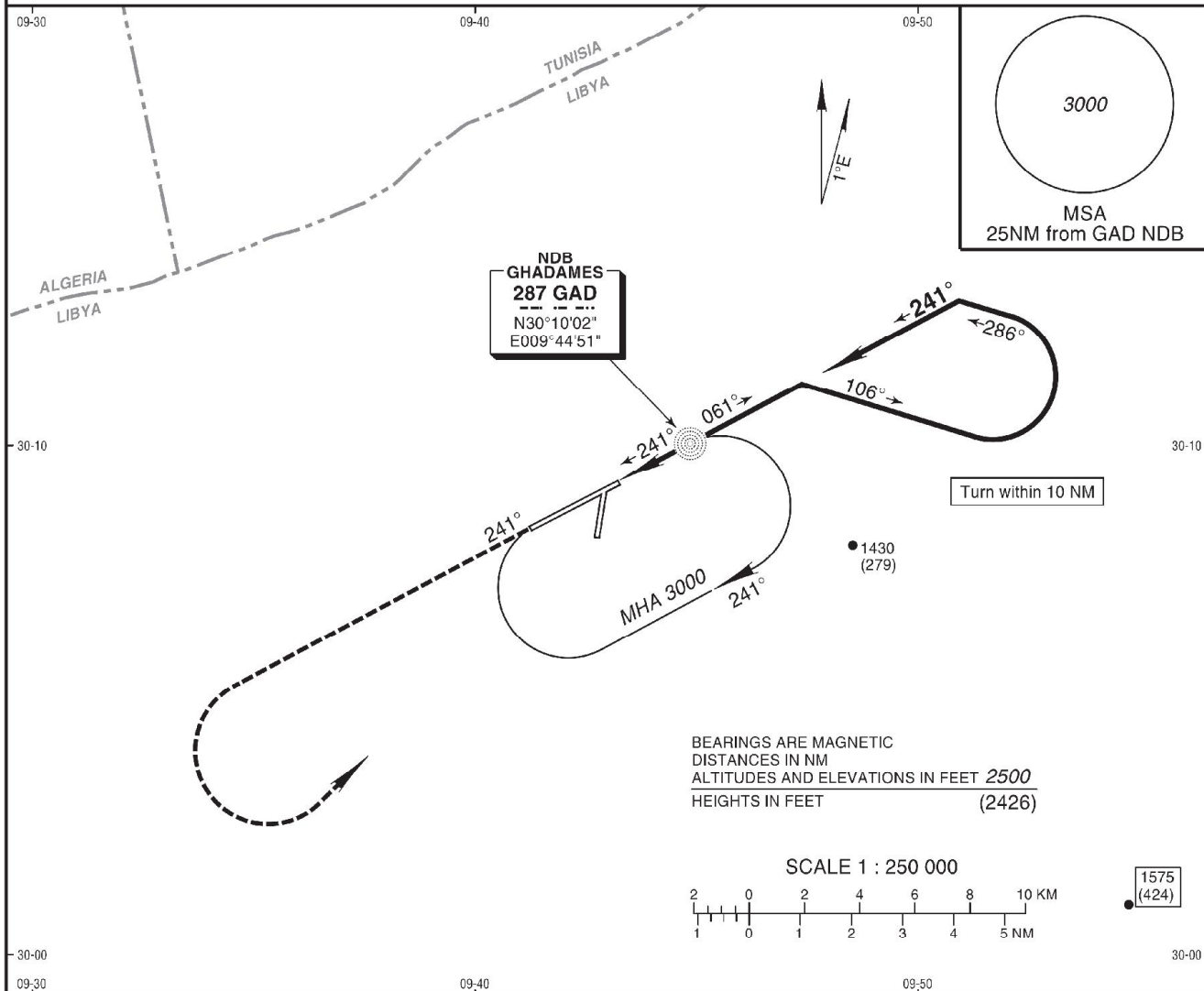
**INTENTIONALLY
BLANK**

INSTRUMENT
APPROACH
CHART - ICAO

AD ELEV 1122 FT
HEIGHTS RELATED TO
THR RWY 24 ELEV 1161 FT

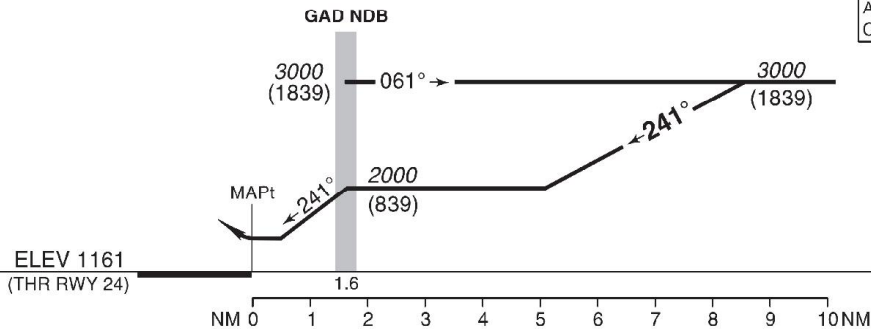
APP 118.100
TWR 119.100
GND 121.900

GHADAMES, LIBYA
Ghadames
NDB RWY 24



Trans Altitude 5000
Trans Level FL 70

MISSED APPROACH:
Climb STRAIGHT AHEAD
to 3000, then turn
LEFT direct GAD NDB
and hold.



STRAIGHT-IN APPROACH		A	B	C	D
NDB	MDA(H)	1500 (339)			
	VIS	2000		2400	
CIRCLING (HAT)	MDA(H)	2000 (839)		2500 (1339)	
	VIS	1900	2800	3700	4600

ADVISORY INFORMATION ONLY						
NDB to MAPt 1.6NM						
kt	70	90	100	120	140	160
min:sec	1:53	1:28	1:19	1:06	0:57	0:50

Notes:
1. Procedure restricted to MAX 210 KT.
2. CAUTION: Avoid overflying international borders Northwest of Airport.

AMENDMENT: New edition.

**INTENTIONALLY
BLANK**