

**HLLB AD 2.1 AERODROME LOCATION INDICATOR AND NAME****HLLB - BENGHAZI / Benina International****HLLB AD 2.2 AERODROME GEOGRAPHICAL AND ADMINISTRATIVE DATA**

1	ARP coordinates and site at AD	N320548.50 E0201610.42 (WGS-84)
2	Direction and distance from city	10 NM east of Benghazi
3	Elevation/Reference temperature	436 ft / 32°C
4	Geoid undulation at AD ELEV PSN	Nil
5	MAG VAR/Annual change	3° E (2012)
6	AD Administration, address, telephone, telefax, AFS	Director of Benina Airport Tel: 00218-61-3350092, 3350093 00218-61-2223063, 26922 Fax: 00218-61-2223063 AFS: HLLBYDYX
7	Types of traffic permitted (IFR/VFR)	IFR / VFR
8	Remarks	Nil

**HLLB AD 2.3 OPERATIONAL HOURS**

1	AD Administration	8 HR daily
2	Customs and immigration	H24
3	Health and sanitation	H24
4	AIS Briefing Office	H24
5	ATS Reporting Office (ARO)	H24
6	MET Briefing Office	H24
7	ATS	H24
8	Fuelling	H24
9	Handling	H24
10	Security	H24
11	De-icing	Nil
12	Remarks	Nil

**HLLB AD 2.4 HANDLING SERVICES AND FACILITIES**

1	Cargo handling facilities	Cranes - Heavy fork lifts - Roller pallet lifts - Conveyor belt, High load
2	Fuel/oil types	Jet A1- AvGas 100 Nil
3	Fuelling facilities/capacity	Tankers
4	De-icing facilities	Nil
5	Hangar space for visiting aircraft	Limited
6	Repair facilities for visiting aircraft	Limited
7	Remarks	Nil

**HLLB AD 2.5 PASSENGER FACILITIES**

1	Hotels	In city
2	Restaurants	Snacks
3	Transportation	Taxis
4	Medical facilities	First Aid
5	Bank and Post Office	Available
6	Tourist Office	Available
7	Remarks	Nil

**HLLB AD 2.6 RESCUE AND FIRE FIGHTING SERVICES**

1	AD category for fire fighting	CAT 8
2	Rescue equipment	Nil
3	Capability for removal of disabled aircraft	Nil
4	Remarks	Nil

**HLLB AD 2.7 SEASONAL AVAILABILITY - CLEARING**

1	Types of clearing equipment	Nil
2	Clearance priorities	Nil
3	Remarks	Nil

**HLLB AD 2.8 APRONS, TAXIWAYS AND CHECK LOCATIONS/POSITIONS DATA**

1	Apron surface and strength	Concrete/Asphalt
2	Taxiway width, surface and strength	23 m, Asphalt, PCN 60
3	Altimeter checkpoint location and elevation	Main terminal apron, elevation 132 m (433 ft)
4	VOR checkpoints	Nil
5	INS checkpoints	Nil
6	Remarks	Nil

**HLLB AD 2.9 SURFACE MOVEMENT GUIDANCE AND CONTROL SYSTEM AND MARKINGS**

1	Use of aircraft stand ID signs, TWY guidelines and visual docking/parking guidance system of aircraft stands	Nil
2	RWY and TWY markings and LGT	Yes
3	Stop bars	Yes
4	Remarks	Nil

**HLLB AD 2.10 AERODROME OBSTACLES**

In approach/TKOF areas			In circling area and at AD		Remarks
1			2		3
RWY NR. Area affected	Obstacle type Elevation MSL Markings/LGT	Coord. (Dist from THR)	Obstacle type Elevation Markings/LGT	Coord.	
a	b	c	a	b	
15L/33R	Nil	Nil	Nil	Nil	Nil
15R/33L	Crane 600.39 ft	N320556 E0201647 1110 m	Nil	Nil	Length of crane booms (lever arms) are 76 m
	Crane 581.03 ft	N320554 E0201643 1003 m			
	Crane 562.66 ft	N320551 E0201646 1012 m			
	Crane 561.68 ft	N320558 E0201641 1012 m			

## HLLB AD 2.11 METEOROLOGICAL INFORMATION PROVIDED

1	Associated MET Office	Abuatny/Benghazi
2	Hours of service MET Office outside hours	H24
3	Office responsible for TAF preparation Periods of validity	Benina
4	Trend forecast Interval of issuance	METAR / TAF
5	Briefing/consultation provided	Personal
6	Flight documentation language(s) used	English
7	Charts and other information available for briefing or consultation	SIG WX
8	Supplementary equipment available for providing information	Tel: 00218-61-2226935, 3350169
9	ATS units provided with information	Benina APP / TWR
10	Additional information (limitation of service, etc.)	Nil

## HLLB AD 2.12 RUNWAY PHYSICAL CHARACTERISTICS

Designations RWY NR	TRUE BRG	Dimensions of RWY (m)	Strength (PCN) and surface of RWY and SWY	THR coord. RWY end coord. THR geoid undulation	THR elevation and highest elevation of TDZ of precision APP RWY
1	2	3	4	5	6
15L	150°	3600 x 45	Asphalt/Concrete	N320641.76 E0201541.34	THR 376 ft
33R	330°			N320500.42 E0201649.62	THR 433 ft
15R	150°	3600 x 45	Asphalt/Concrete PCN 90	N320636.74 E0201531.21	THR 376 ft
33L	330°			N320455.35 E0201639.56	THR 433 ft
Designations RWY NR	Slope of RWY - SWY	SWY dimensions (m)	CWY dimensions (m)	Strip dimensions (m)	OFZ
1	7	8	9	10	11
15L	+0.5 %	300 x 45	300 x 150	4320 x 300	Nil
33R	-0.5 %	300 x 45	300 x 150		
15R	+0.5 %	300 x 45	300 x 150	4320 x 300	Nil
33L	-0.5 %	300 x 45	300 x 150		
Designations RWY NR	Remarks				
1	12				
15L	Rwy closed				
33R					
15R	Nil				
33L					

## HLLB AD 2.13 DECLARED DISTANCES

RWY Designator	TORA (m)	TODA (m)	ASDA (m)	LDA (m)	Remarks
1	2	3	4	5	6
15L	3600	3900	3900	3600	Nil
33R	3600	3900	3900	3600	Nil
15R	3600	3900	3900	3600	Nil
33L	3600	3900	3900	3600	Nil

## HLLB AD 2.14 APPROACH AND RUNWAY LIGHTING

RWY Designator	APCH LGT Type LEN INTST	THR LGT colour WBAR	VASIS (MEHT) PAPI	TDZ LGT LEN	RWY CL LGT LEN spacing colour INTST	RWY Edge LGT LEN spacing colour INTST	RWY End LGT colour WBAR	SWY LGT LEN colour	Remarks
1	2	3	4	5	6	7	8	9	10
15L	ALS LIH white Calvert CAT II	Green Wing bars	VASI 3.00°	White	White Last 600 m White/Red	White Last 600 m yellow LIH	Red	Yes	Nil
33R									
15R	ALS LIL white CAT I	Wing bars	PAPI 3.00°	Nil	Nil	White last 600 m yellow LIL	Yes	Yes	Nil
33L	ALS LIL white short Calvert CAT II								

## HLLB AD 2.15 OTHER LIGHTING, SECONDARY POWER SUPPLY

1	ABN/IBN location, characteristics and hours of operations	ABN: N320648 E0201554 Flashing green/white at night and at IMC.
2	LDI location and LGT Anemometer location and LGT	15 and 33 THR, signal lamp
3	TWY edge and centreline lighting	TWY Edge: partly light off Centreline: light off TWY D, white
4	Secondary power supply/ Switch-over time	Available 6 sec.
5	Remarks	SWY: partly TWY C: rapid exit

## HLLB AD 2.16 HELICOPTER LANDING AREA

To be developed.

## HLLB AD 2.17 ATS AIRSPACE

1	Designation and lateral limits	Benina CTR A circle with radius of 25 NM centered at Benina VOR/DME BNA N320728 E0201513
2	Vertical limits	GND - 5000
3	Airspace classification	C
4	ATS unit call sign language(s)	Benina TWR English
5	Transition altitude/Transition level	5000 / FL70
6	Remarks	Nil

## HLLB AD 2.18 ATS COMMUNICATION FACILITIES

Service designation	Call sign	Frequency	Hours of operation	Remarks
1	2	3	4	5
TWR	Benina Tower	121.300 MHz	H24	Primary
APP/RSR	Benghazi Approach	129.200 MHz	H24	Primary
		126.500 MHz	H24	Secondary
		127.000 MHz	H24	Additional for ARR/DEP
ACC/RSR	Nil	125.500 MHz	H24	Primary
		129.500 MHz	H24	Secondary
GND	Nil	121.900 MHz	H24	Nil

## HLLB AD 2.19 RADIO NAVIGATION AND LANDING AIDS

Type of aid, MAG VAR CAT of ILS/MLS (For VOR/ILS/MLS, give declination)	ID	Frequency	Hours of operation	Position of transmitting antenna coordinates	Elevation of DME transmitting antenna	Remarks
1	2	3	4	5	6	7
VOR/DME 3.0°E	BNA	117.400 MHz	H24	N320728 E0201513	349 ft	Nil
L	BN	362 KHz	H24	N321020 E0201310	Nil	Nil
L	BNR	278 KHz	H24	N321018 E0201312	Nil	Nil
L	BS	257 KHz	H24	N320131.40 E0201857.20	Nil	Nil
ILS RWY 33L CAT II						
LOC 3.0°E	I-BNI	110.300 MHz	H24	N320646.82 E0201524.49	Nil	Nil
GP	I-BNI	335.000 MHz	H24	N320503.02 E0201628.31	Nil	Glideslope 3°

### HLLB AD 2.20 LOCAL TRAFFIC REGULATIONS

- |   |  |
|---|--|
| <p><b>20.1 Airport regulation</b></p> <p>General:</p> <p>Aerodrome restricted to aircraft capable of maintaining two-way radio communications with ATC.</p> <p><b>20.2 Taxiing to and from stands</b></p> <p>a) Arriving flights will be allocated stand number by the ground controller and assistance from "FOLLOW ME" vehicle can be requested via the ground controller.</p> <p>b) Departing IFR flights shall contact the TWR to obtain ATC clearance before commencing taxiing.</p> <p><b>20.3 Parking area for small aircraft (General aviation)</b></p> <p>General aviation aircraft shall not be guided by marshallers to the parking area for small aircraft.</p> | <p><b>20.4 Parking area for helicopters</b></p> <p>As directed by ATC.</p> <p><b>20.5 Apron - taxiing during winter conditions</b></p> <p>Not applicable.</p> <p><b>20.6 Taxiing-limitations</b></p> <p>Nil.</p> <p><b>20.7 School and training flights - technical test flights - use of runways</b></p> <p>Nil.</p> <p><b>20.8 Helicopter traffic - limitation</b></p> <p>Nil.</p> <p><b>20.9 Removal of disabled aircraft from runways</b></p> <p>When an aircraft is wrecked on a runway, it is the duty of the owner or user of such aircraft to have it removed as soon as possible. If a wrecked aircraft is not removed from the runway as quickly as possible by the owner or user, the aircraft will be removed by the aerodrome authority at the owner's or user's expense.</p> |
|---|--|

### HLLB AD 2.21 NOISE ABATEMENT PROCEDURES

Non Noise Certificated subsonic airplane (NNC) operations restricted daily between sunset/sunrise.

### HLLB AD 2.22 FLIGHT PROCEDURES

- |   |   |
|---|---|
| <p><b>22.1 General</b></p> <p>Unless special permission has been obtained from Benghazi Approach or Benina Tower as appropriate, flight within Benina TMA and Benina CTR shall be in accordance with the Instrument Flight Rules.</p> <p><b>22.2 Procedures for IFR flights within Benina TMA</b></p> <p>The inbound transit and outbound routes shown on the charts may be varied at the discretion of ATS if necessary, in case of congestion, inbound aircraft may also be instructed to hold at one of the designated airways, reporting points.</p> <p><b>22.3 Radar procedures within Benina TMA</b></p> <p><i>Radar vectoring and sequencing</i></p> <p>Normally aircraft will be vectored and sequenced from all reporting points to the appropriate final approach track (ILS, VOR/DME, VISUAL), so as to ensure an expeditious flow of traffic. Radar vectors and flight levels/altitudes will be issued, as required, for spacing and separating the aircraft, so that correct landing intervals are maintained, taking into account aircraft characteristics.</p> <p>Radar vectoring charts are not published since the instrument approach procedures and altitudes ensure that adequate terrain clearance exists at all times until the point where the pilot will resume navigation on final approach or in the circuit.</p> | <p><b>22.4 Precision radar approach</b></p> <p>Nil.</p> <p><b>22.5 Communication failure</b></p> <p>In the event of communication failure the pilot shall act in accordance with the communication procedures in ANNEX 2.</p> <p><b>22.6 Procedures for VFR flights within Benina TMA</b></p> <p>Provided traffic conditions so permit ATC clearance for VFR flights will be given under the conditions described below:</p> <p>a) A flight plan requesting ATC clearance, containing items 7 to 18 and indicating the purpose of the flight, shall be submitted.</p> <p>b) ATC clearance shall be obtained immediately before the aircraft enters the area concerned.</p> <p>c) Position reports shall be submitted in accordance with 3.6.3 ANNEX 2.</p> <p>d) Deviation from the ATC clearance may only be made when prior permission has been obtained.</p> <p>e) The flight shall be conducted with vertical visual reference to the ground unless the flight can be conducted in accordance with the Instrument Flight Rules.</p> |
|---|---|

- f) Two-way radio communication shall be maintained on the frequency prescribed. Information about the appropriate frequency can be obtained from Tripoli Information.
- g) The pilot-in-command shall be the holder of an International VHF licence.
- h) VFR traffic flying at or above 5500 ft shall be equipped with SSR transponder with 4069 codes in Mode A/3. Flights performed in connection with parachute jumps shall, in addition, be equipped with Mode C with automatic transmission of pressure altitude information (cf. ANNEX 10, Volume I). Exemption from this requirement may be granted by Benina Control.

#### 22.7 Procedures for VFR flights within Benina CTR

- a) Flight plan shall be filed for the flight concerned.

- b) ATC clearance shall be obtained from the Control Tower.
- c) Deviation from ATC clearance may only be made when prior permission has been obtained.
- d) The flight shall be conducted with vertical visual reference to the ground.
- e) Two-way radio communication shall be established on the frequency prescribed before flight takes place in the control zone.

#### Communication Failure

- a) If inside CTR - join the traffic circuit at altitude 1000 ft and stand-by for light signals from the tower.
- b) If outside CTR - descend to below TMA. Under VMC enter CTR from northeast or southwest and proceed to the traffic circuit at 1000 ft MSL or 500 ft GND, whichever is higher. Stand-by for light signals from the tower.

### HLLB AD 2.23 ADDITIONAL INFORMATION

Nil

### HLLB AD 2.24 CHARTS RELATED TO THE AERODROME

AERODROME CHART - ICAO	AD 2 HLLB-9
AERODROME OBSTACLE CHART - ICAO - TYPE A	AD 2 HLLB-11
STANDARD DEPARTURE CHART INSTRUMENT - ICAO - RWY 15L/R	AD 2 HLLB-13
STANDARD DEPARTURE CHART INSTRUMENT - ICAO - RWY 33L/R	AD 2 HLLB-15
STANDARD ARRIVAL CHART INSTRUMENT - ICAO - RWY 15L/R (ARR A)	AD 2 HLLB-17
STANDARD ARRIVAL CHART INSTRUMENT - ICAO - RWY 15L/R (ARR B)	AD 2 HLLB-19
STANDARD ARRIVAL CHART INSTRUMENT - ICAO - RWY 33L/R (ARR D)	AD 2 HLLB-21
STANDARD ARRIVAL CHART INSTRUMENT - ICAO - RWY 33L/R (ARR E)	AD 2 HLLB-23
INSTRUMENT APPROACH CHART - ICAO - VOR ILS DME RWY 33L	AD 2 HLLB-25
INSTRUMENT APPROACH CHART - ICAO - VOR DME RWY 15L/R	AD 2 HLLB-27
INSTRUMENT APPROACH CHART - ICAO - VOR DME RWY 33L/R	AD 2 HLLB-29
INSTRUMENT APPROACH CHART - ICAO - Locator RWY 15L/R	AD 2 HLLB-31
INSTRUMENT APPROACH CHART - ICAO - Locator RWY 33L/R	AD 2 HLLB-33
VISUAL APPROACH CHART - ICAO	AD 2 HLLB-35

**INTENTIONALLY  
BLANK**





**INTENTIONALLY  
BLANK**

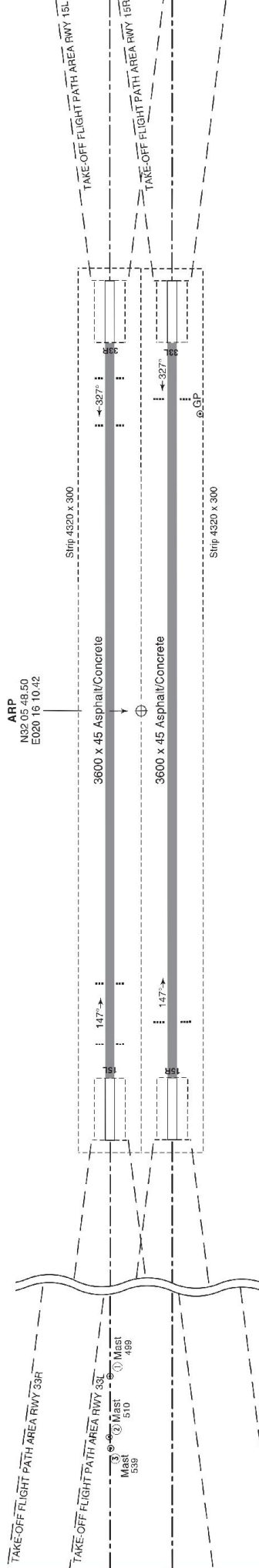
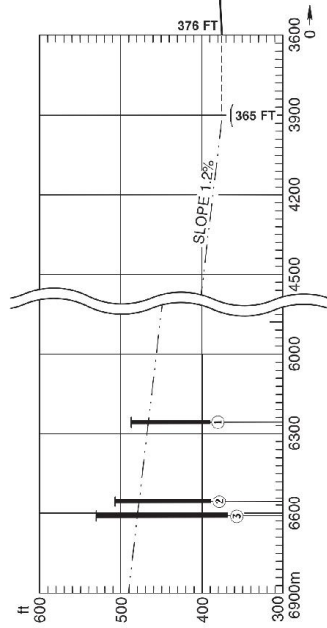
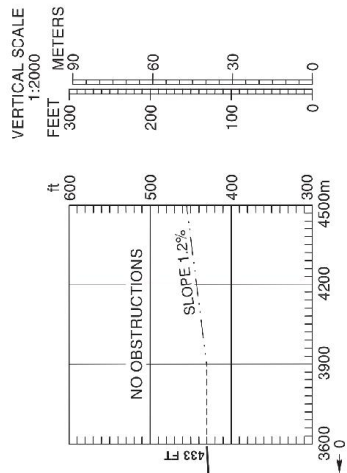
AERODROME OBSTACLE CHART-ICAO  
TYPE A (OPERATING LIMITATIONS)

BENGHAZI, LIBYA  
Benina Intl

DISTANCES IN METERS, ELEVATIONS IN FEET  
MAGNETIC VARIATION 3° E, 2012

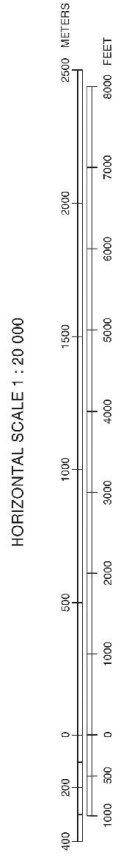
RWY 15 L/R - 33 L/R

DECLARED DISTANCES			
RWY 15 L/R			RWY 33 L/R
3600	TAKE-OFF RUN AVAILABLE		3600
3900	TAKE-OFF DISTANCE AVAILABLE		3900
3900	ACCELERATE STOP DISTANCE AVAILABLE		3900
3600	LANDING DISTANCE AVAILABLE		3600



AMENDMENT RECORD	
No.	Date Entered by

LEGEND	
IDENTIFICATION NUMBER	PROFILE
①	▲
②	○
*	✳
MOBILE	⊖



**INTENTIONALLY  
BLANK**

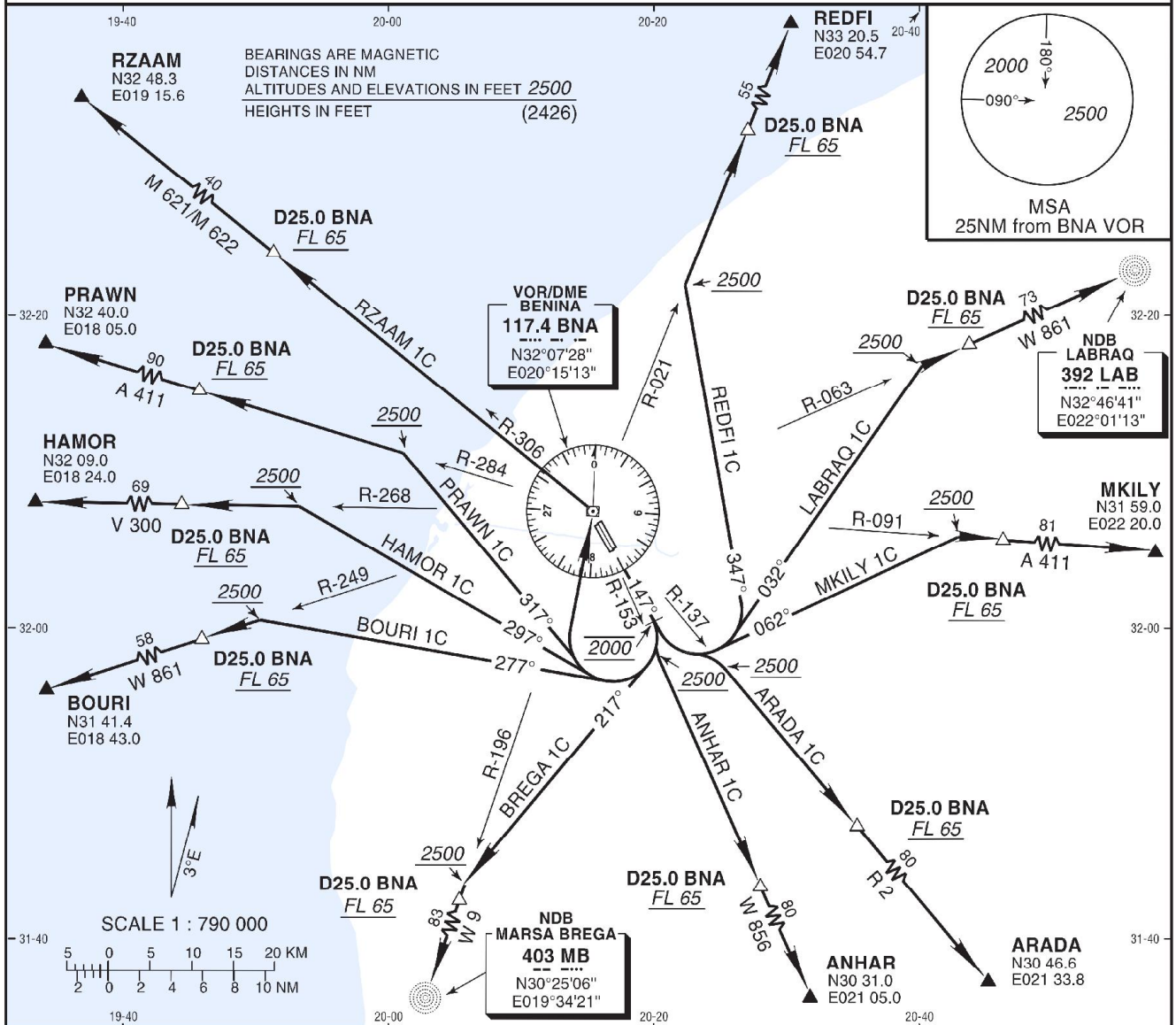
STANDARD DEPARTURE  
CHART INSTRUMENT  
(SID) - ICAO

AD ELEV 436 FT  
Trans Alt 5000  
Trans Level FL 70

BENGHAZI APP	127.000
BENINA TWR	121.300
BENINA GND	121.900

BENGHAZI, LIBYA  
Benina Intl  
RWY 15L/R

**REDFI 1C, LABRAQ 1C, MKILY 1C, ARADA 1C, ANHAR 1C, BREGA 1C, BOURI 1C, HAMOR 1C, PRAWN 1C, RZAAM 1C DEPARTURE**



**ROUTING**

<b>REDFI 1C</b>	Climb on course 147° to 2000, then climbing turn LEFT on track 347° as cleared but not below 2500 to intercept and follow R-021 BNA to airway M1 to REDFI. Cross D25.0 BNA at or above FL 65.
<b>LABRAQ 1C</b>	Climb on course 147° to 2000, then climbing turn LEFT on track 032° as cleared but not below 2500 to intercept and follow R-063 BNA along airway W861 to LAB NDB. Cross D25.0 BNA at or above FL 65.
<b>MKILY 1C</b>	Climb on course 147° to 2000, then climbing turn LEFT on track 062° as cleared but not below 2500 to intercept and follow R-091 BNA along airway A411 to MKILY. Cross D25.0 BNA at or above FL 65.
<b>ARADA 1C</b>	Climb on course 147° to 2000, intercept and follow R-137 BNA, climbing as cleared but not below 2500, proceed along airway R2 to ARADA. Cross D25.0 BNA at or above FL 65.
<b>ANHAR 1C</b>	Climb on course 147° to 2000, intercept and follow R-153 BNA, climbing as cleared but not below 2500, proceed along airway W856 to ANHAR. Cross D25.0 BNA at or above FL 65.
<b>BREGA 1C</b>	Climb on course 147° to 2000, then climbing turn RIGHT on track 217° as cleared but not below 2500 to intercept and follow R-196 BNA along airway W9 to MB NDB. Cross D25.0 BNA at or above FL 65.
<b>BOURI 1C</b>	Climb on course 147° to 2000, then climbing turn RIGHT on track 277° as cleared but not below 2500 to intercept and follow R-249 BNA along airway W861 to BOURI. Cross D25.0 BNA at or above FL 65.
<b>HAMOR 1C</b>	Climb on course 147° to 2000, then climbing turn RIGHT on track 297° as cleared but not below 2500 to intercept and follow R-268 BNA along airway V300 to HAMOR. Cross D25.0 BNA at or above FL 65.
<b>PRAWN 1C</b>	Climb on course 147° to 2000, then climbing turn RIGHT on track 317° as cleared but not below 2500 to intercept and follow R-284 BNA along airway A411 to PRAWN. Cross D25.0 BNA at or above FL 65.
<b>RZAAM 1C</b>	Climb on course 147° to 2000, then climbing turn RIGHT to BNA VOR as cleared but not below 2500 to intercept and follow R-306 BNA along airway M621/M622 to RZAAM. Cross D25.0 BNA at or above FL 65.

AMENDMENT: New chart.

**INTENTIONALLY  
BLANK**

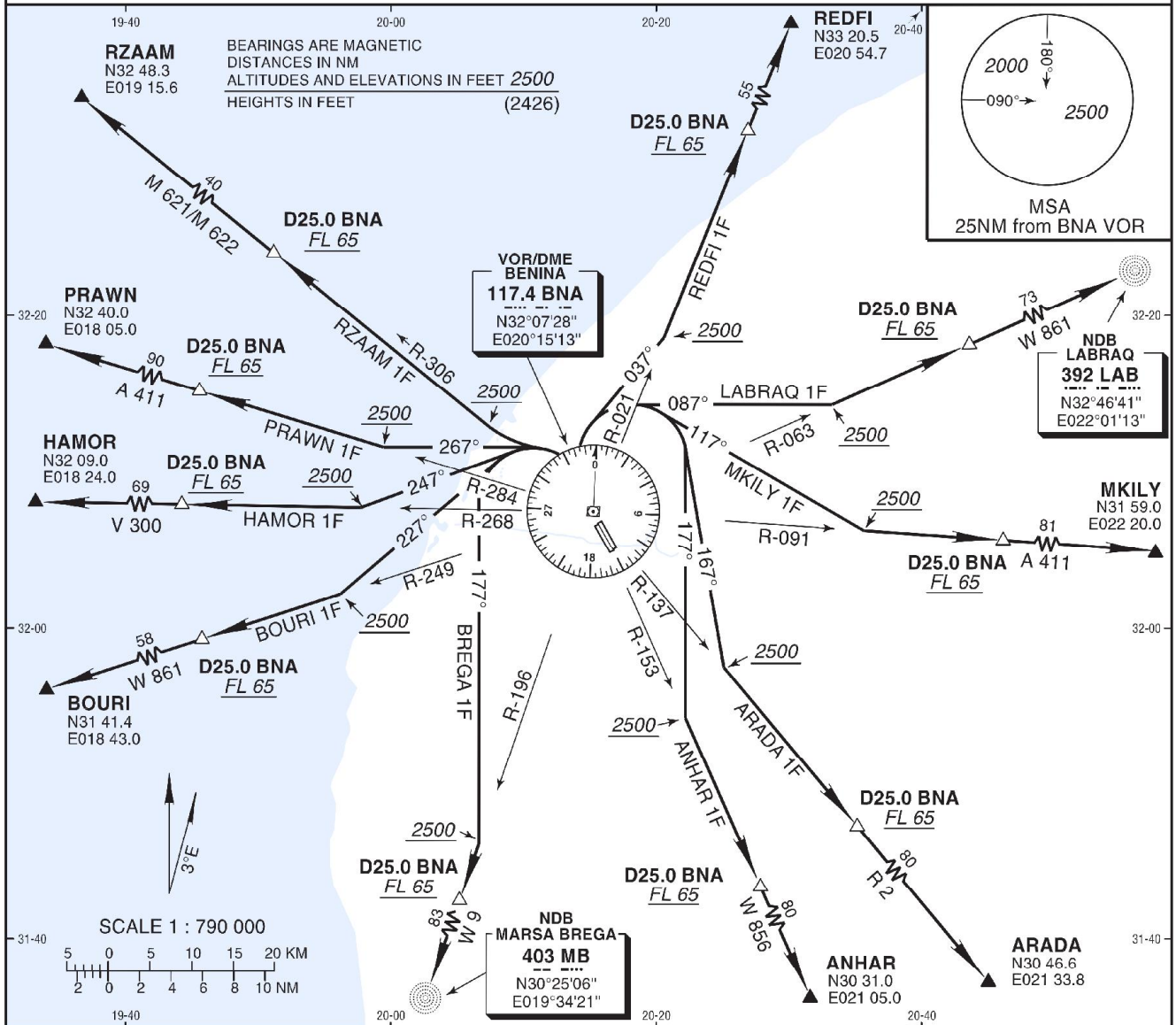
STANDARD DEPARTURE  
CHART INSTRUMENT  
(SID) - ICAO

AD ELEV 436 FT  
Trans Alt 5000  
Trans Level FL 70

BENGHAZI APP	127.000
BENINA TWR	121.300
BENINA GND	121.900

BENGHAZI, LIBYA  
Benina Intl  
RWY 33L/R

**REDFI 1F, LABRAQ 1F, MKILY 1F, ARADA 1F, ANHAR 1F, BREGA 1F, BOURI 1F, HAMOR 1F, PRAWN 1F, RZAAM 1F DEPARTURE**



**ROUTING**

<b>REDFI 1F</b>	Climb STRAIGHT AHEAD to BNA VOR, then climbing turn RIGHT on track 037° as cleared but not below 2500 to intercept and follow R-021 BNA to airway M1 to REDFI. Cross D25.0 BNA at or above FL 65.
<b>LABRAQ 1F</b>	Climb STRAIGHT AHEAD to BNA VOR, then climbing turn RIGHT on track 087° as cleared but not below 2500 to intercept and follow R-063 BNA along airway W861 to LAB NDB. Cross D25.0 BNA at or above FL 65.
<b>MKILY 1F</b>	Climb STRAIGHT AHEAD to BNA VOR, then climbing turn RIGHT on track 117° as cleared but not below 2500 to intercept and follow R-091 BNA along airway A411 to MKILY. Cross D25.0 BNA at or above FL 65.
<b>ARADA 1F</b>	Climb STRAIGHT AHEAD to BNA VOR, then climbing turn RIGHT on track 167° as cleared but not below 2500 to intercept and follow R-137 BNA along airway R2 to ARADA. Cross D25.0 BNA at or above FL 65.
<b>ANHAR 1F</b>	Climb STRAIGHT AHEAD to BNA VOR, then climbing turn RIGHT on track 177° as cleared but not below 2500 to intercept and follow R-153 BNA along airway W856 to ANHAR. Cross D25.0 BNA at or above FL 65.
<b>BREGA 1F</b>	Climb STRAIGHT AHEAD to BNA VOR, then climbing turn LEFT on track 177° as cleared but not below 2500 to intercept and follow R-196 BNA along airway W9 to MB NDB. Cross D25.0 BNA at or above FL 65.
<b>BOURI 1F</b>	Climb STRAIGHT AHEAD to BNA VOR, then climbing turn LEFT on track 227° as cleared but not below 2500 to intercept and follow R-249 BNA along airway W861 to BOURI. Cross D25.0 BNA at or above FL 65.
<b>HAMOR 1F</b>	Climb STRAIGHT AHEAD to BNA VOR, then climbing turn LEFT on track 247° as cleared but not below 2500 to intercept and follow R-268 BNA along airway V300 to HAMOR. Cross D25.0 BNA at or above FL 65.
<b>PRAWN 1F</b>	Climb STRAIGHT AHEAD to BNA VOR, then climbing turn LEFT on track 267° as cleared but not below 2500 to intercept and follow R-284 BNA along airway A411 to PRAWN. Cross D25.0 BNA at or above FL 65.
<b>RZAAM 1F</b>	Climb STRAIGHT AHEAD to BNA VOR, then climbing turn LEFT as cleared but not below 2500 to intercept and follow R-306 BNA along airway M621/M622 to RZAAM. Cross D25.0 BNA at or above FL 65.

AMENDMENT: New chart.

**INTENTIONALLY  
BLANK**



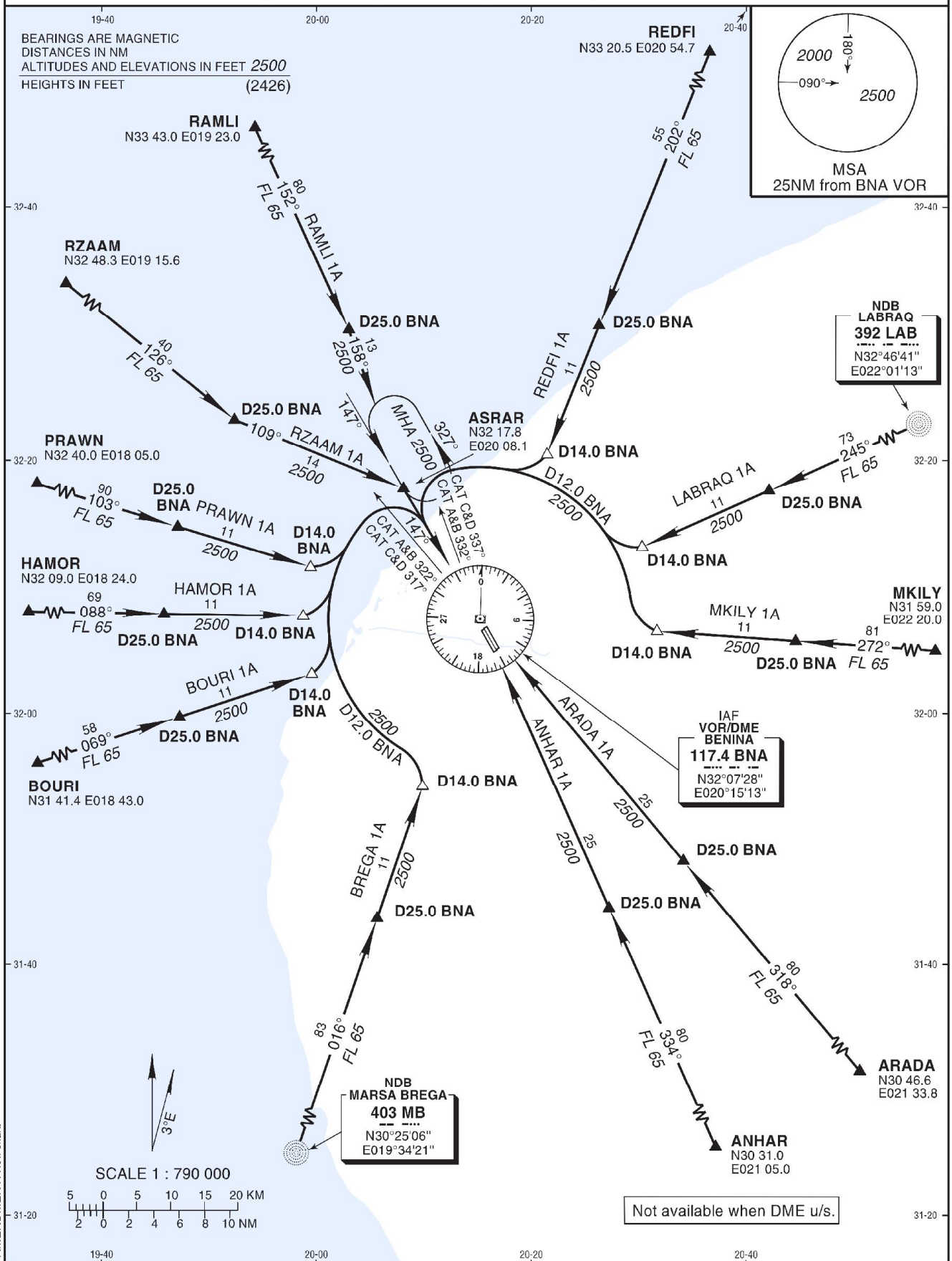
STANDARD ARRIVAL  
CHART INSTRUMENT  
(STAR) - ICAO

AD ELEV 436 FT  
Trans Alt 5000  
Trans Level FL 70

BENGHAZI APP	127.000
BENINA TWR	121.300
BENINA GND	121.900

BENGHAZI, LIBYA  
Benina Intl  
RWY 15L/R

**REDFI 1A, LABRAQ 1A, MKILY 1A, ARADA 1A, ANHAR 1A, BREGA 1A,  
BOURI 1A, HAMOR 1A, PRAWN 1A, RZAAM 1A, RAMLI 1A ARRIVAL**



**INTENTIONALLY  
BLANK**

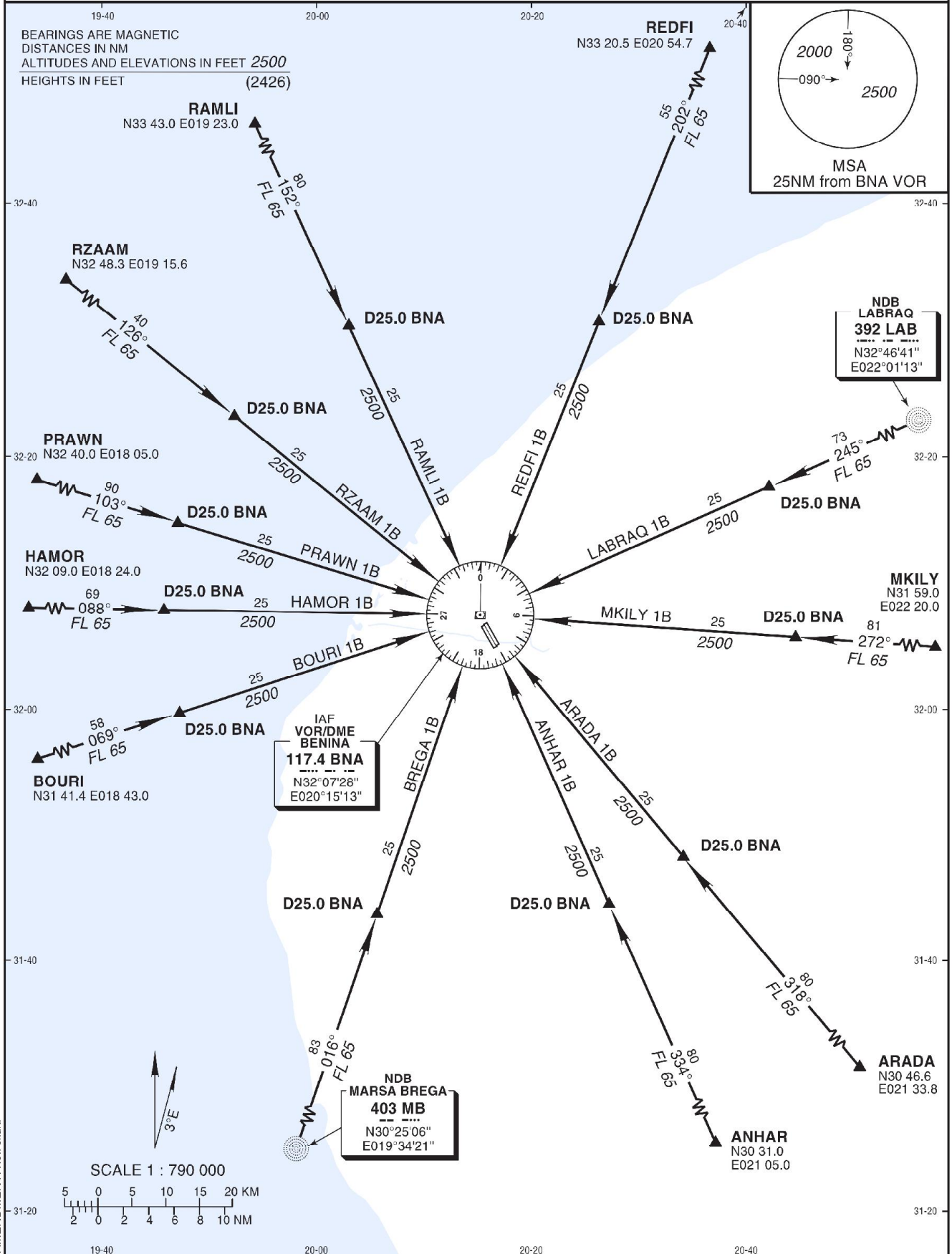
STANDARD ARRIVAL  
CHART INSTRUMENT  
(STAR) - ICAO

AD ELEV 436 FT  
Trans Alt 5000  
Trans Level FL 70

BENGHAZI APP	127.000
BENINA TWR	121.300
BENINA GND	121.900

BENGHAZI, LIBYA  
Benina Intl  
RWY 15L/R

**REDFI 1B, LABRAQ 1B, MKILY 1B, ARADA 1B, ANHAR 1B, BREGA 1B,  
BOURI 1B, HAMOR 1B, PRAWN 1B, RZAAM 1B, RAMLI 1B ARRIVAL**



**INTENTIONALLY  
BLANK**

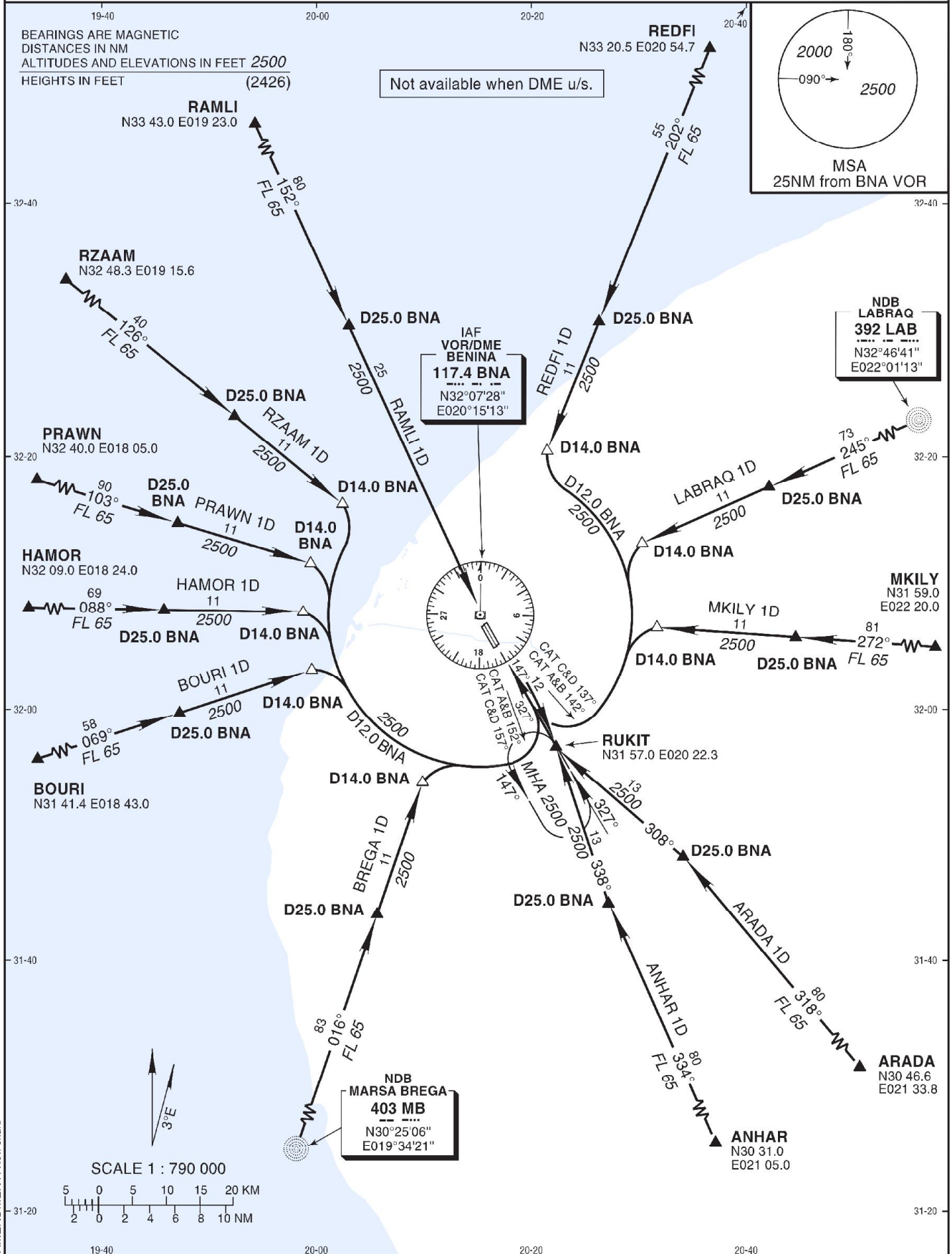
STANDARD ARRIVAL  
CHART INSTRUMENT  
(STAR) - ICAO

AD ELEV 436 FT  
Trans Alt 5000  
Trans Level FL 70

BENGHAZI APP	127.000
BENINA TWR	121.300
BENINA GND	121.900

BENGHAZI, LIBYA  
Benina Intl  
RWY 33L/R

**REDFI 1D, LABRAQ 1D, MKILY 1D, ARADA 1D, ANHAR 1D, BREGA 1D,  
BOURI 1D, HAMOR 1D, PRAWN 1D, RZAAM 1D, RAMLI 1D ARRIVAL**



AMENDMENT: New chart.

**INTENTIONALLY  
BLANK**

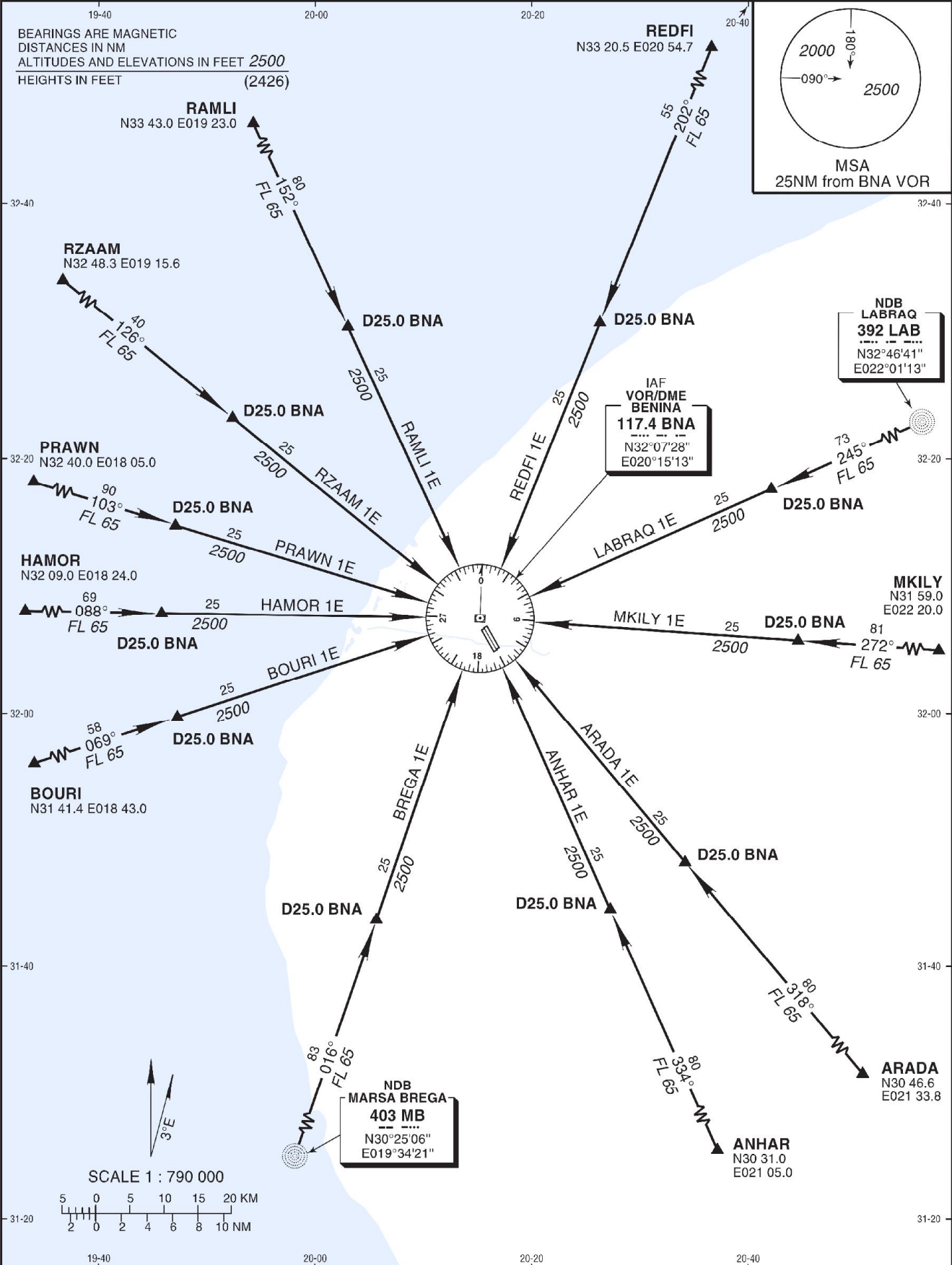
STANDARD ARRIVAL  
CHART INSTRUMENT  
(STAR) - ICAO

AD ELEV 436 FT  
Trans Alt 5000  
Trans Level FL 70

BENGHAZI APP	127.000
BENINA TWR	121.300
BENINA GND	121.900

BENGHAZI, LIBYA  
Benina Intl  
RWY 33L/R

**REDFI 1E, LABRAQ 1E, MKILY 1E, ARADA 1E, ANHAR 1E, BREGA 1E,  
BOURI 1E, HAMOR 1E, PRAWN 1E, RZAAM 1E, RAMLI 1E ARRIVAL**



**INTENTIONALLY  
BLANK**

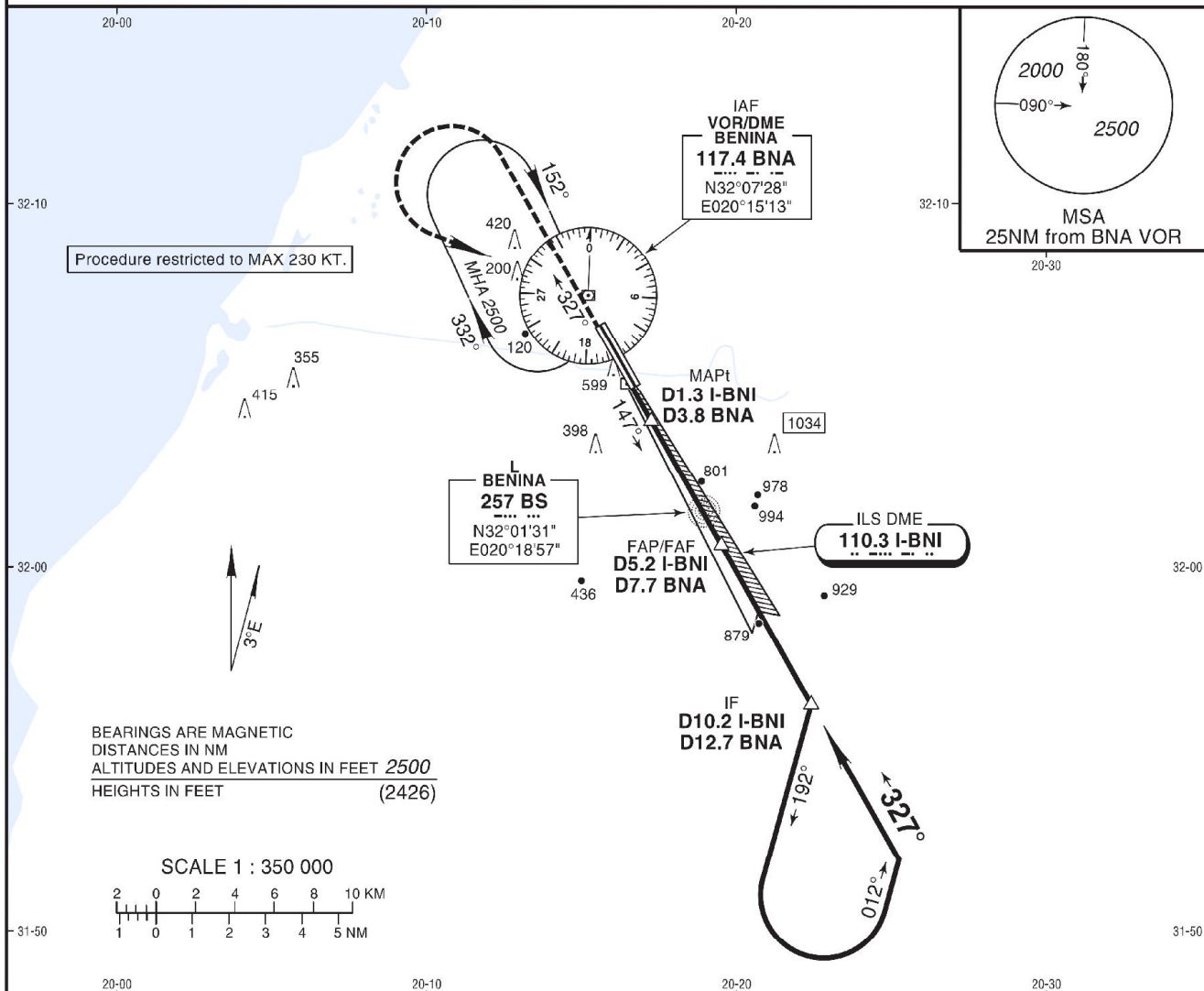


INSTRUMENT  
APPROACH  
CHART - ICAO

AD ELEV 436 FT  
HEIGHTS RELATED TO  
THR RWY 33L ELEV 433 FT

BENHAZI APP	129.200
BENINA TWR	121.300
BENINA GND	121.900

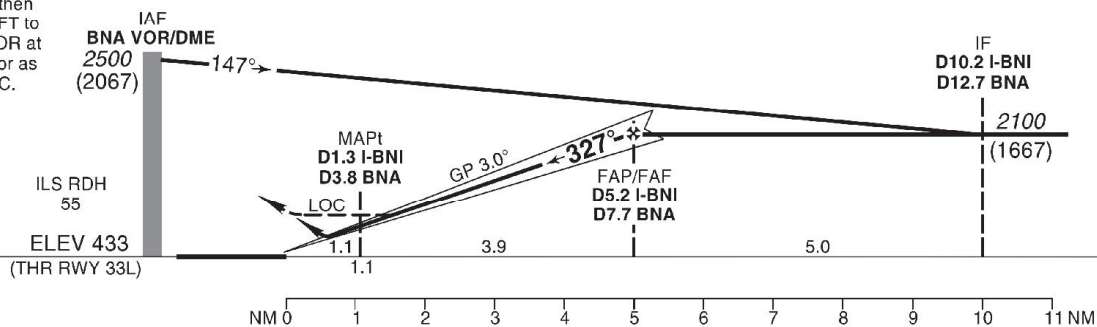
BENHAZI, LIBYA  
Benina Intl  
VOR ILS DME RWY 33L



**MISSED APPROACH:**

Climb on track 327° to reach 2000, then climbing turn LEFT to return to BNA VOR at 2500 and hold or as instructed by ATC.

Trans Altitude 5000  
Trans Level FL 70



STRAIGHT-IN APPROACH		A	B	C	D
ILS DME	DA(H)	770 (337)			
	VIS	800			
	w/o lights	1200			
LOC	MDA(H)	850 (417)			
	VIS	1600	2000		2400
	w/o lights	2000	2400		2400
CIRCLING (HAA)		A	B	C	D
East of airport	MDA(H)	1500 (1064)			
	VIS	1900	2800	3700	4600
West of airport	MDA(H)	1350 (914)			
	VIS	1900	2800	3700	4600

AMENDMENT: New chart.

**INTENTIONALLY  
BLANK**

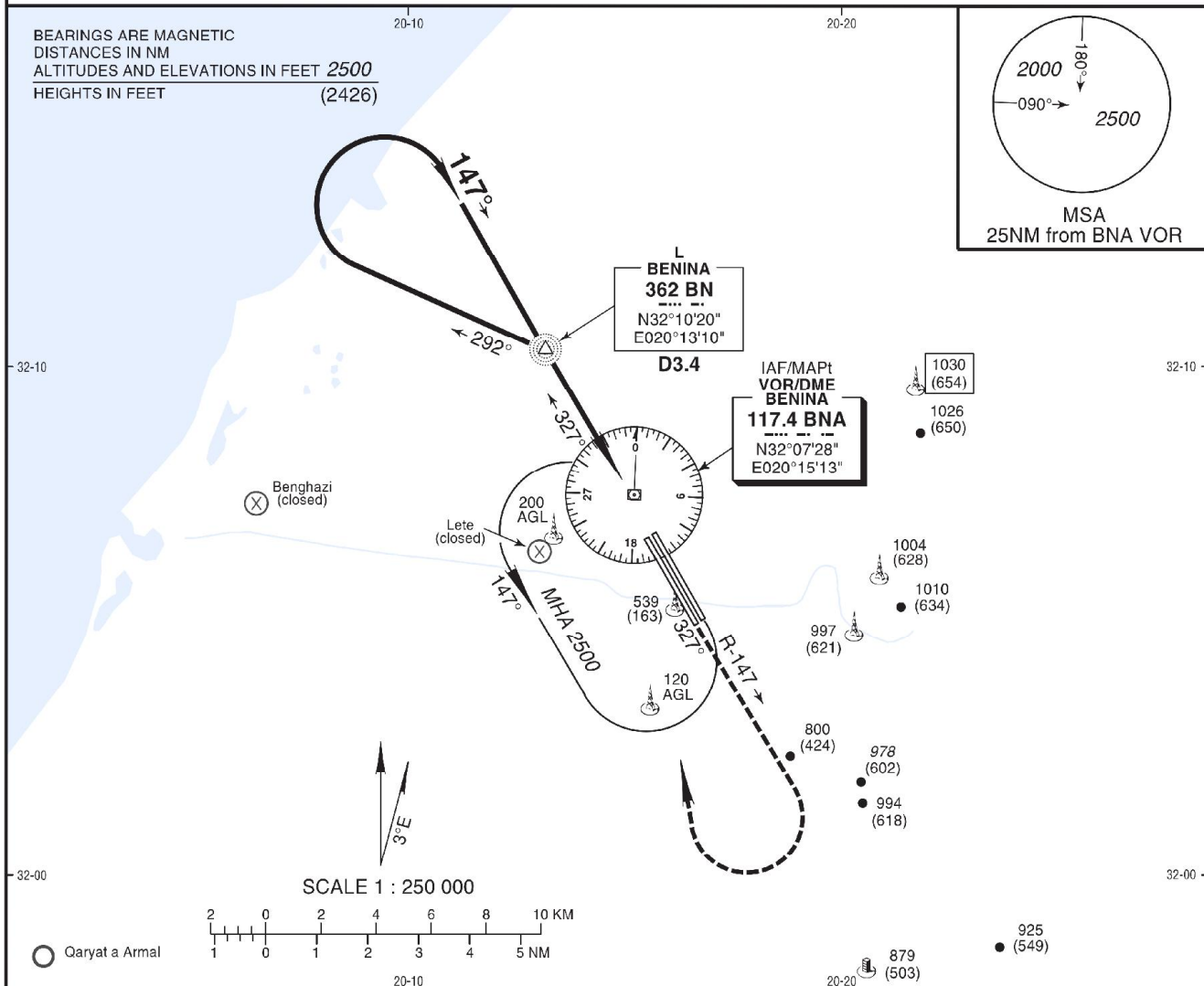
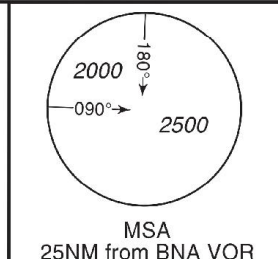
INSTRUMENT  
APPROACH  
CHART - ICAO

AD ELEV 436 FT  
HEIGHTS RELATED TO  
THR RWY 15L/R ELEV 376 FT

BENGHAZI APP	129.200
BENINA TWR	121.300
BENINA GND	121.900

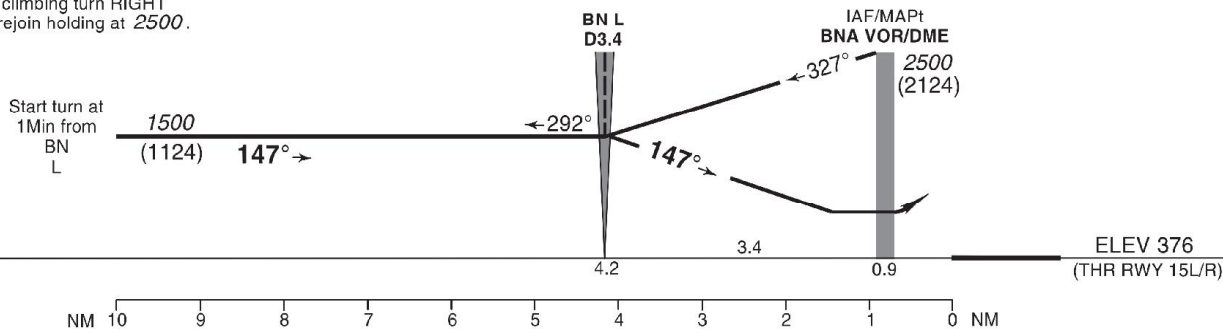
BENGHAZI, LIBYA  
Benina Intl  
VOR DME RWY 15L/R

BEARINGS ARE MAGNETIC  
DISTANCES IN NM  
ALTITUDES AND ELEVATIONS IN FEET 2500  
HEIGHTS IN FEET (2426)



**MISSED APPROACH:**  
Climb on R-147 BNA to 2000,  
then climbing turn RIGHT  
and rejoin holding at 2500.

Trans Altitude 5000  
Trans Level FL 70



STRAIGHT-IN APPROACH		A	B	C	D
VOR DME	MDA(H)	680 (304)			
	VIS w/o lights	800		1600	
CIRCLING (HAA)		A	B	C	D
East of airport	MDA(H)	1500 (1064)			
	VIS	2000	2400	4800	
West of airport	MDA(H)	840 (404)			
	VIS	2000	2400	4800	

AMENDMENT: New edition.

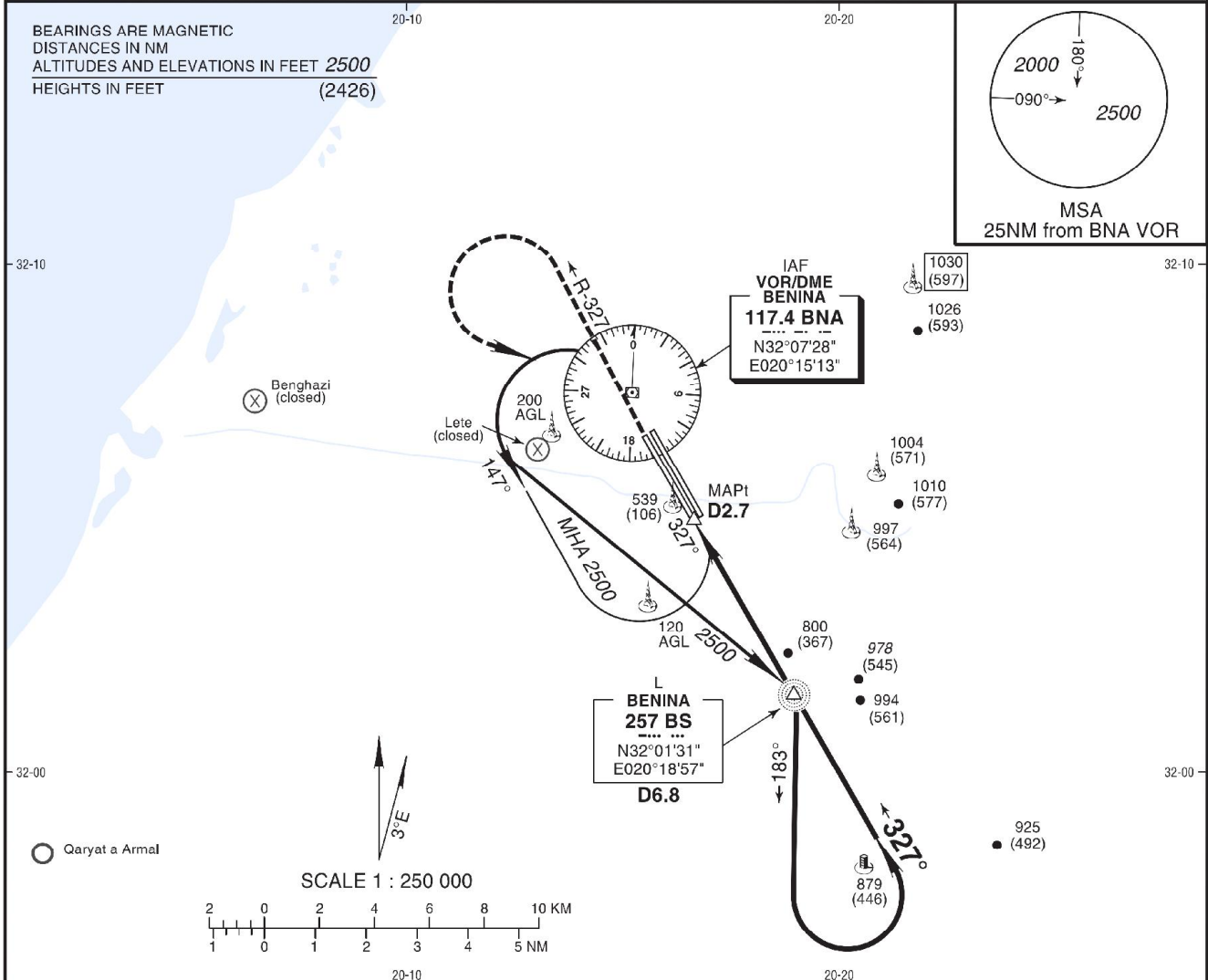
**INTENTIONALLY  
BLANK**

INSTRUMENT  
APPROACH  
CHART - ICAO

AD ELEV 436 FT  
HEIGHTS RELATED TO  
THR RWY 33L/R ELEV 433 FT

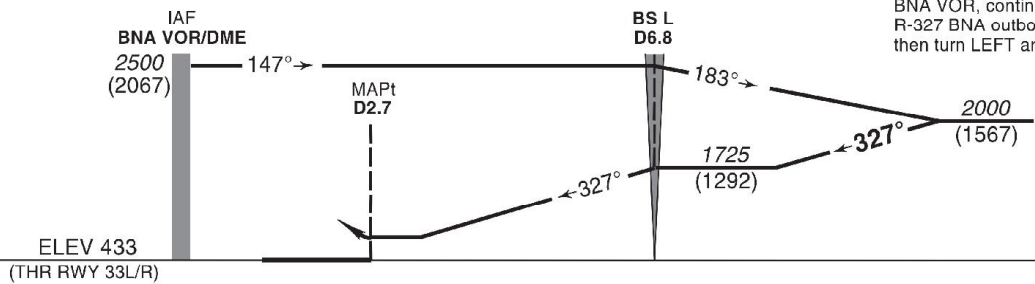
BENGHAZI APP	129.200
BENINA TWR	121.300
BENINA GND	121.900

BENGHAZI, LIBYA  
Benina Intl  
VOR DME RWY 33L/R



Trans Altitude 5000  
Trans Level FL 70

**MISSED APPROACH:**  
Climb STRAIGHT AHEAD to BNA VOR, continue climb on R-327 BNA outbound to 2500, then turn LEFT and rejoin holding.



NM 0 1 2 3 4 5 6 7 8 9 10 NM

STRAIGHT-IN APPROACH		A	B	C	D
VOR DME	MDA(H)	1350 (917)			
	VIS	1200	3600	4000	4800
CIRCLING (HAA)	w/o lights	2000	4400	4800	
		A	B	C	D
East of airport	MDA(H)	1500 (1064)			
	VIS	2000	2400	4800	
West of airport	MDA(H)	1350 (914)			
	VIS	2000	2400	4800	

AMENDMENT: New edition.

**INTENTIONALLY  
BLANK**

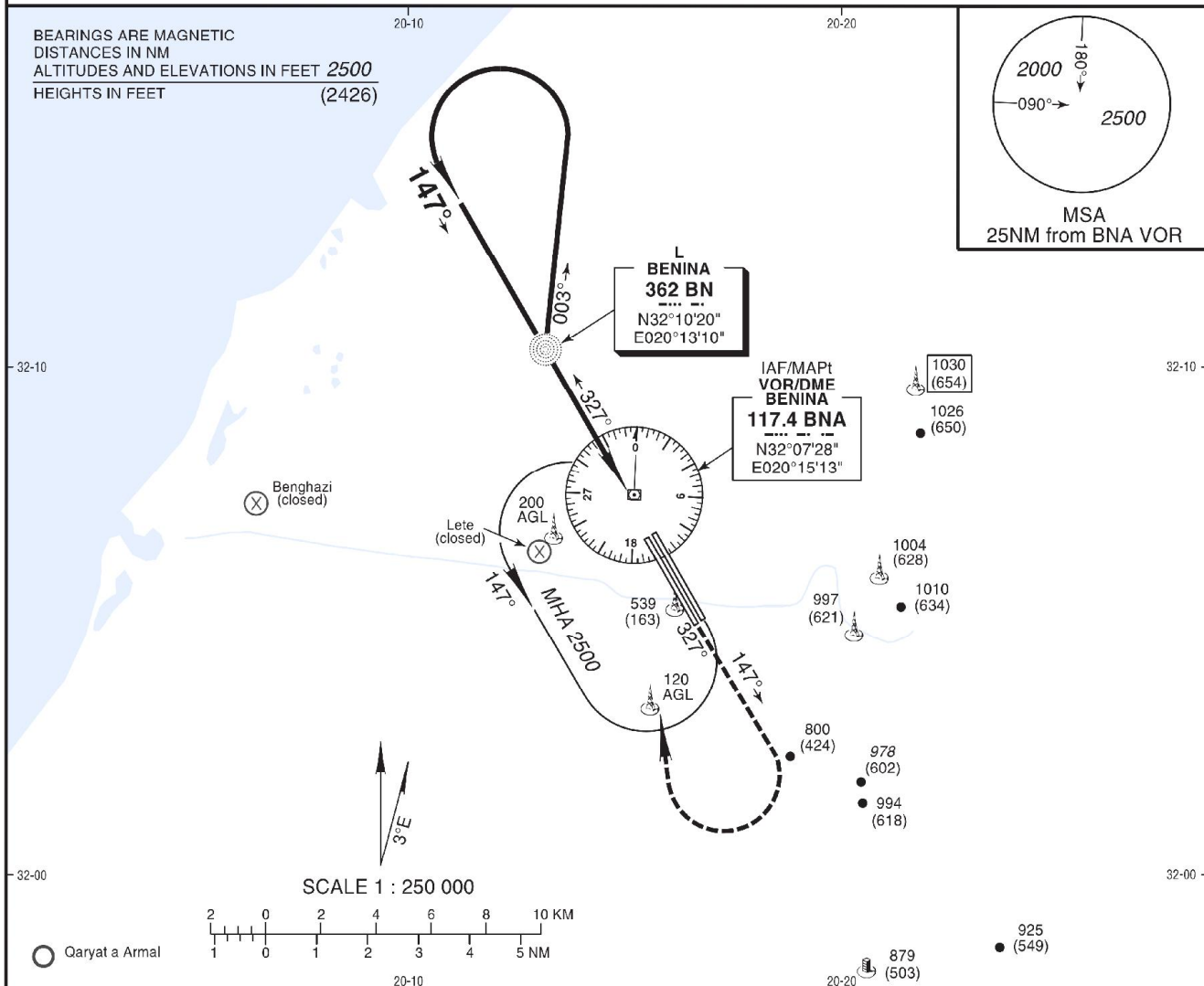
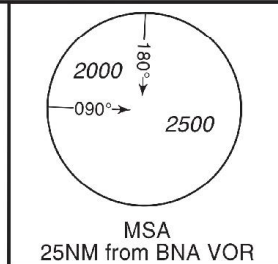
**INSTRUMENT  
APPROACH  
CHART - ICAO**

**AD ELEV 436 FT**  
HEIGHTS RELATED TO  
THR RWY 15L/R ELEV 376 FT

BENGHAZI APP	129.200
BENINA TWR	121.300
BENINA GND	121.900

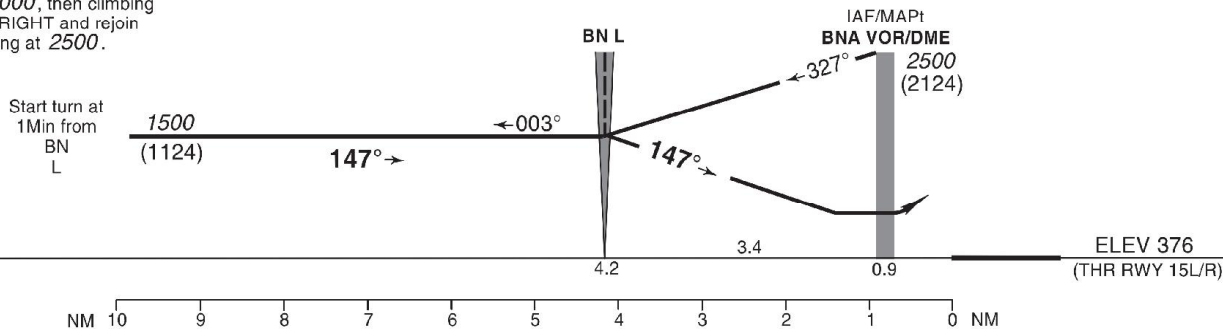
**BENGHAZI, LIBYA**  
Benina Intl  
**Locator RWY 15L/R**

BEARINGS ARE MAGNETIC  
DISTANCES IN NM  
ALTITUDES AND ELEVATIONS IN FEET **2500**  
HEIGHTS IN FEET (2426)



**MISSED APPROACH:**  
Climb on 147° from BN L to 2000, then climbing turn RIGHT and rejoin holding at 2500.

Trans Altitude 5000  
Trans Level FL 70



STRAIGHT-IN APPROACH		A	B	C	D
L	MDA(H)	840 (464)			
	VIS w/o lights	1600	2000	2400	2400
CIRCLING (HAA)		A	B	C	D
East of airport	MDA(H)	1500 (1064)			
	VIS	2000	2400	4800	4800
West of airport	MDA(H)	840 (404)			
	VIS	2000	2400	4800	4800

AMENDMENT: New edition.

**INTENTIONALLY  
BLANK**

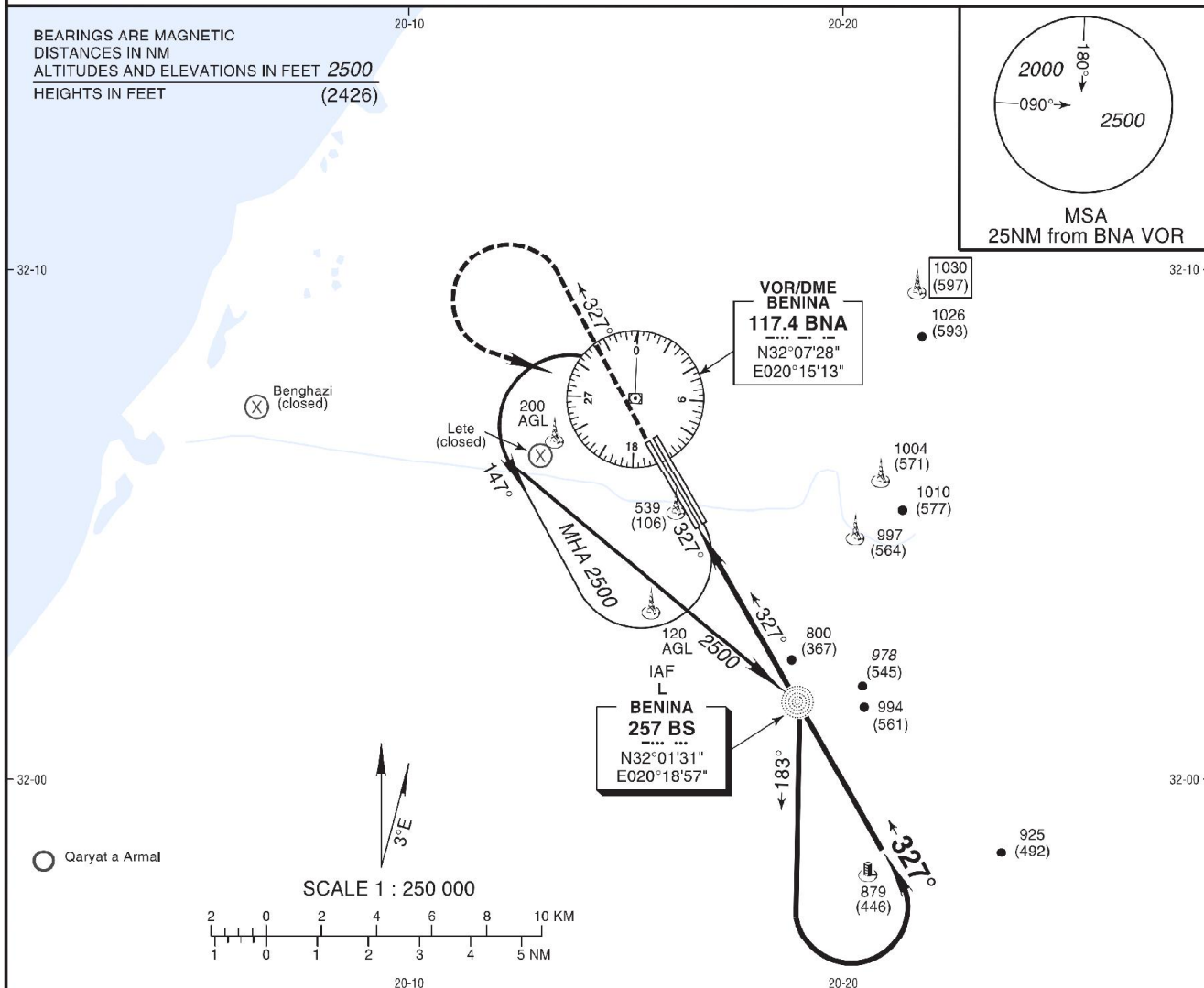


**INSTRUMENT  
APPROACH  
CHART - ICAO**

**AD ELEV 436 FT**  
HEIGHTS RELATED TO  
THR RWY 33L/R ELEV 433 FT

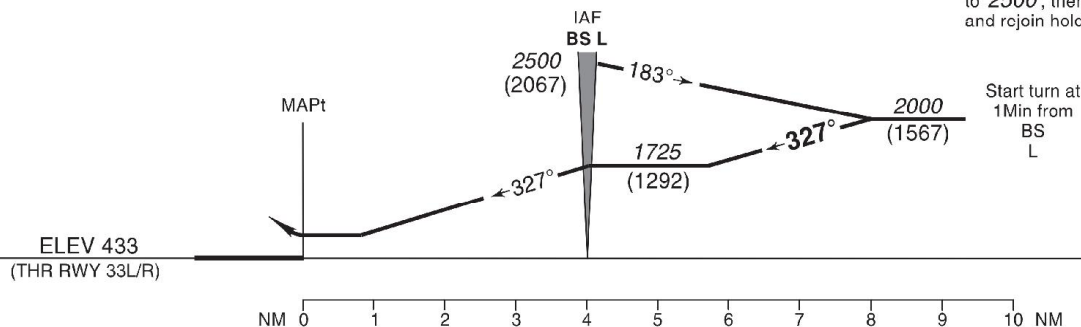
BENGHAZI APP	129.200
BENINA TWR	121.300
BENINA GND	121.900

**BENGHAZI, LIBYA**  
Benina Intl  
**Locator RWY 33L/R**



Trans Altitude **5000**  
Trans Level **FL 70**

**MISSED APPROACH:**  
Climb STRAIGHT AHEAD  
to **2500**, then turn LEFT  
and rejoin holding.



STRAIGHT-IN APPROACH		A	B	C	D
L	MDA(H)	1350 (917)			
	VIS w/o lights	2000	4400	4800	4800
CIRCLING (HAA)		A	B	C	D
East of airport	MDA(H)	1500 (1064)			
	VIS	2000	2400	4800	4800
West of airport	MDA(H)	1350 (914)			
	VIS	2000	2400	4800	4800

AMENDMENT: New edition.

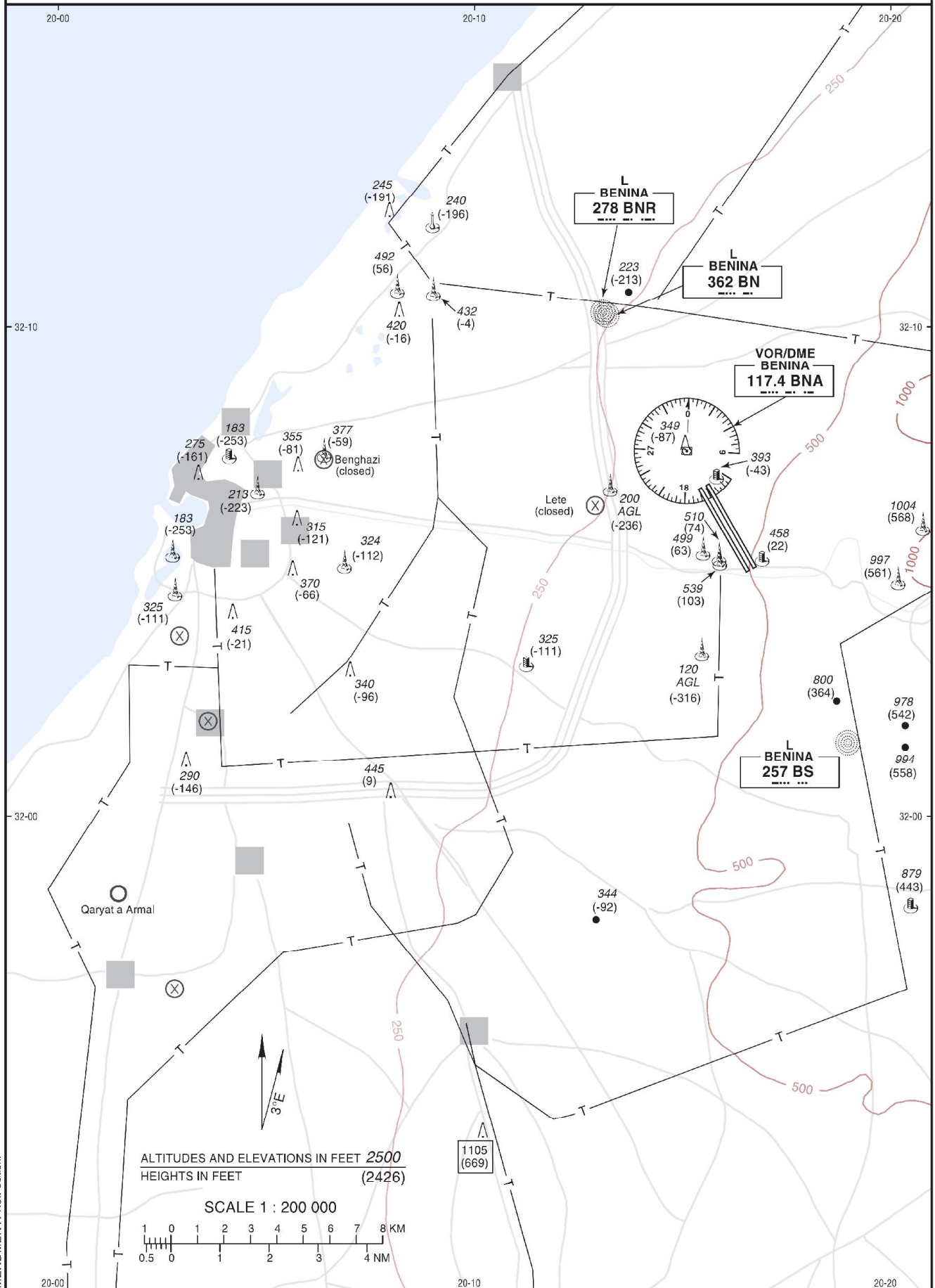
**INTENTIONALLY  
BLANK**

VISUAL APPROACH  
CHART - ICAO

WGS-84 AD ELEV 436 FT

BENGHAZI APP	129.200
BENINA TWR	121.300
BENINA GND	121.900

BENGHAZI, LIBYA  
Benina Intl



AMENDMENT: New edition.

**INTENTIONALLY  
BLANK**