

AD 3. OTHER AERODROMES**AD 3.1 SECONDARY/OTHER INTERNATIONAL AERODROMES****HLGT AD 3.1 AERODROME LOCATION INDICATOR AND NAME**

HLGT - GHAT / Ghat

HLGT AD 3.2 AERODROME GEOGRAPHICAL AND ADMINISTRATIVE DATA

1	ARP coordinates and site at AD	N250800.78 E0100802.52 (WGS-84)
2	Direction and distance from city	25 km north of Ghat
3	Elevation/Reference temperature	2296 ft / 39.8°C
4	Geoid undulation at AD ELEV PSN	Nil
5	MAG VAR/Annual change	1.1°E (2012)
6	AD Administration, address, telephone, telefax, AFS	Airport Director Ghat
7	Types of traffic permitted (IFR/VFR)	IFR / VFR
8	Remarks	Nil

HLGT AD 3.3 OPERATIONAL HOURS

1	AD Administration	SR-SS
2	Customs and immigration	Nil
3	Health and sanitation	Nil
4	AIS Briefing Office	Nil
5	ATS Reporting Office (ARO)	Nil
6	MET Briefing Office	Nil
7	ATS	Nil
8	Fuelling	Nil
9	Handling	Nil
10	Security	Nil
11	De-icing	Nil
12	Remarks	Nil

HLGT AD 3.4 HANDLING SERVICES AND FACILITIES

1	Cargo handling facilities	Nil
2	Fuel/oil types	Jet A1
3	Fuelling facilities/capacity	Nil
4	De-icing facilities	Nil
5	Hangar space for visiting aircraft	Nil
6	Repair facilities for visiting aircraft	Nil
7	Remarks	Nil

HLGT AD 3.5 PASSENGER FACILITIES

1	Hotels	One in town
2	Restaurants	One in town
3	Transportation	Nil
4	Medical facilities	Hospital in town
5	Bank and Post Office	Nil
6	Tourist Office	Nil
7	Remarks	Nil

HLGT AD 3.6 RESCUE AND FIRE FIGHTING SERVICES

1	AD category for fire fighting	CAT 5
2	Rescue equipment	Nil
3	Capability for removal of disabled aircraft	Nil
4	Remarks	Nil

HLGT AD 3.7 SEASONAL AVAILABILITY - CLEARING

1	Types of clearing equipment	Nil
2	Clearance priorities	Nil
3	Remarks	Nil

HLGT AD 3.8 APRONS, TAXIWAYS AND CHECK LOCATIONS/POSITIONS DATA

1	Apron surface and strength	Concrete
2	Taxiway width, surface and strength	30 m, Asphalt and Concrete
3	Altimeter checkpoint location and elevation	Nil
4	VOR checkpoints	Nil
5	INS checkpoints	Nil
6	Remarks	Nil

HLGT AD 3.9 SURFACE MOVEMENT GUIDANCE AND CONTROL SYSTEM AND MARKINGS

1	Use of aircraft stand ID signs, TWY guidelines and visual docking/parking guidance system of aircraft stands	Taxiing guidance: standard marking
2	RWY and TWY markings and LGT	Threshold, touchdown, edge, centreline, fixed distance and runway designation for RWY 17/35. Displaced THR RWY 06/24. Taxi holding position and taxiway centreline for all taxiways.
3	Stop bars	At apron exits
4	Remarks	Nil

HLGT AD 3.10 AERODROME OBSTACLES

In approach/TKOF areas			In circling area and at AD		Remarks
1			2		3
RWY NR. Area affected	Obstacle type Elevation Markings/LGT	Coord. (Dist from THR)	Obstacle type Elevation Markings/LGT	Coord.	
a	b	c	a	b	
06/24	Hills along extended centreline at a distance from 2450m to 4800m from THR 06 2579 ft 2461 ft 2624 ft 2644 ft 2638 ft 2487 ft 2776 ft	2450 m 4800 m 6000 m	Nil	Nil	Nil

HLGT AD 3.11 METEOROLOGICAL INFORMATION PROVIDED

1	Associated MET Office	Nil
2	Hours of service MET Office outside hours	Nil
3	Office responsible for TAF preparation Periods of validity	Nil
4	Trend forecast Interval of issuance	Nil
5	Briefing/consultation provided	Nil
6	Flight documentation language(s) used	Nil
7	Charts and other information available for briefing or consultation	Nil
8	Supplementary equipment available for providing information	Nil
9	ATS units provided with information	Nil
10	Additional information (limitation of service, etc.)	Nil

HLGT AD 3.12 RUNWAY PHYSICAL CHARACTERISTICS

Designations RWY NR	TRUE BRG	Dimensions of RWY (m)	Strength (PCN) and surface of RWY and SWY	THR coord. RWY end coord. THR geoid undulation	THR elevation and highest elevation of TDZ of precision APP RWY
1	2	3	4	5	6
06	061°	2000 x 30	PCN 85 Asphalt	N250845.15 E0100835.08	THR 2295 ft
24	241°			N250908.64 E0100922.02	THR 2295 ft
17	171°	3600 x 45	PCN 85 Asphalt	N250905.70 E0100829.76	THR 2296 ft
35	351°			N250709.96 E0100848.84	THR 2249 ft
Designations RWY NR	Slope of RWY - SWY	SWY dimensions (m)	CWY dimensions (m)	Strip dimensions (m)	OFZ
1	7	8	9	10	11
06	Nil	60 x 30	Nil	2240 x 300	Nil
24	Nil	60 x 30	Nil		
17	Nil	300 x 60	Nil	4140 x 300	Nil
35	Nil	120 x 60	Nil		
Designations RWY NR	Remarks				
1	12				
06	Threshold displaced 500 m.				
24	Departure End RWY 24 - N250837.26 E0100819.44				
17	RWY 17/35 closed. Parallel lighted TWY used instead of RWY 17/35.				
35					

HLGT AD 3.13 DECLARED DISTANCES

RWY Designator	TORA (m)	TODA (m)	ASDA (m)	LDA (m)	Remarks
1	2	3	4	5	6
06	2000	2000	2060	1500	Nil
24	2000	2000	2060	2000	Nil
17	3600	3600	3900	3600	Nil
35	3600	3600	3720	3600	Nil

HLGT AD 3.14 APPROACH AND RUNWAY LIGHTING

RWY Designator	APCH LGT Type LEN INTST	THR LGT colour WBAR	VASIS (MEHT) PAPI	TDZ, LGT LEN	RWY CL LGT LEN spacing colour INTST	RWY Edge LGT LEN spacing colour INTST	RWY End LGT colour WBAR	SWY LGT LEN colour	Remarks
1	2	3	4	5	6	7	8	9	10
06	Nil	Nil	Nil	Nil	Nil	Nil	Nil	Nil	Nil
24									
17	ALS LIH	Yes	3-BAR VASI 2.5°/3.0°	Nil	Nil	white last 1200m yellow	Yes	Yes	Nil
35									

HLGT AD 3.15 OTHER LIGHTING, SECONDARY POWER SUPPLY

1	ABN/IBN location, characteristics and hours of operations	Nil
2	LDI location and LGT Anemometer location and LGT	LDI: LGTD WDI: LGTD
3	TWY edge and centreline lighting	Available.
4	Secondary power supply/ Switch-over time	Conforms fully with requirements of Annex 14 for simple approach lighting system.
5	Remarks	Stop bars at apron exits. Emergency lighting available.

HLGT AD 3.16 HELICOPTER LANDING AREA

1	Coordinates TLOF or THR of FATO Geoid undulation	Nil
2	TLOF and/or FATO elevation (m/ft)	Nil
3	TLOF and FATO area dimensions, surface, strength, marking	Northern side of technical apron, 90 x 30m. Surface: Concrete
4	True BRG of FATO	Nil
5	Declared distance available	Nil
6	APP and FATO lighting	Nil
7	Remarks	Nil

HLGT AD 3.17 ATS AIRSPACE

1	Designation and lateral limits	Nil
2	Vertical limits	Nil
3	Airspace classification	Nil
4	ATS unit call sign language(s)	Nil
5	Transition altitude/Transition level	6000 ft / FL80
6	Remarks	Nil

HLGT AD 3.18 ATS COMMUNICATION FACILITIES

Service designation	Call sign	Frequency	Hours of operation	Remarks
1	2	3	4	5
TWR	Ghat Tower	118.150 MHz	HO	Primary
		132.500 MHz	HO	Secondary
APP	Ghat Approach	118.100 MHz	HO	Nil
GND	Ghat Ground	121.900 MHz	HO	Nil

HLGT AD 3.19 RADIO NAVIGATION AND LANDING AIDS

Type of aid, MAG VAR CAT of ILS/MLS (For VOR/ILS/MLS, give declination)	ID	Frequency	Hours of operation	Position of transmitting antenna coordinates	Elevation of DME transmitting antenna	Remarks
1	2	3	4	5	6	7
VOR/DME 1°E	GHT	114.800 MHz	H24	N250848.78 E0100820.10	2296 ft	Nil
NDB	GHT	435 KHz	H24	N251119.00 E0100816.00	Nil	Nil

HLGT AD 3.20 LOCAL TRAFFIC REGULATIONS

Nil

HLGT AD 3.21 NOISE ABATEMENT PROCEDURES

Nil

HLGT AD 3.22 FLIGHT PROCEDURES

Nil

HLGT AD 3.23 ADDITIONAL INFORMATION

Nil

HLGT AD 3.24 CHARTS RELATED TO THE AERODROME

AERODROME CHART - ICAO	AD 3 HLGT-7
INSTRUMENT APPROACH CHART - ICAO - VOR DME RWY 17	AD 3 HLGT-9
INSTRUMENT APPROACH CHART - ICAO - VOR DME RWY 35	AD 3 HLGT-11
INSTRUMENT APPROACH CHART - ICAO - NDB RWY 17	AD 3 HLGT-13

**INTENTIONALLY
BLANK**

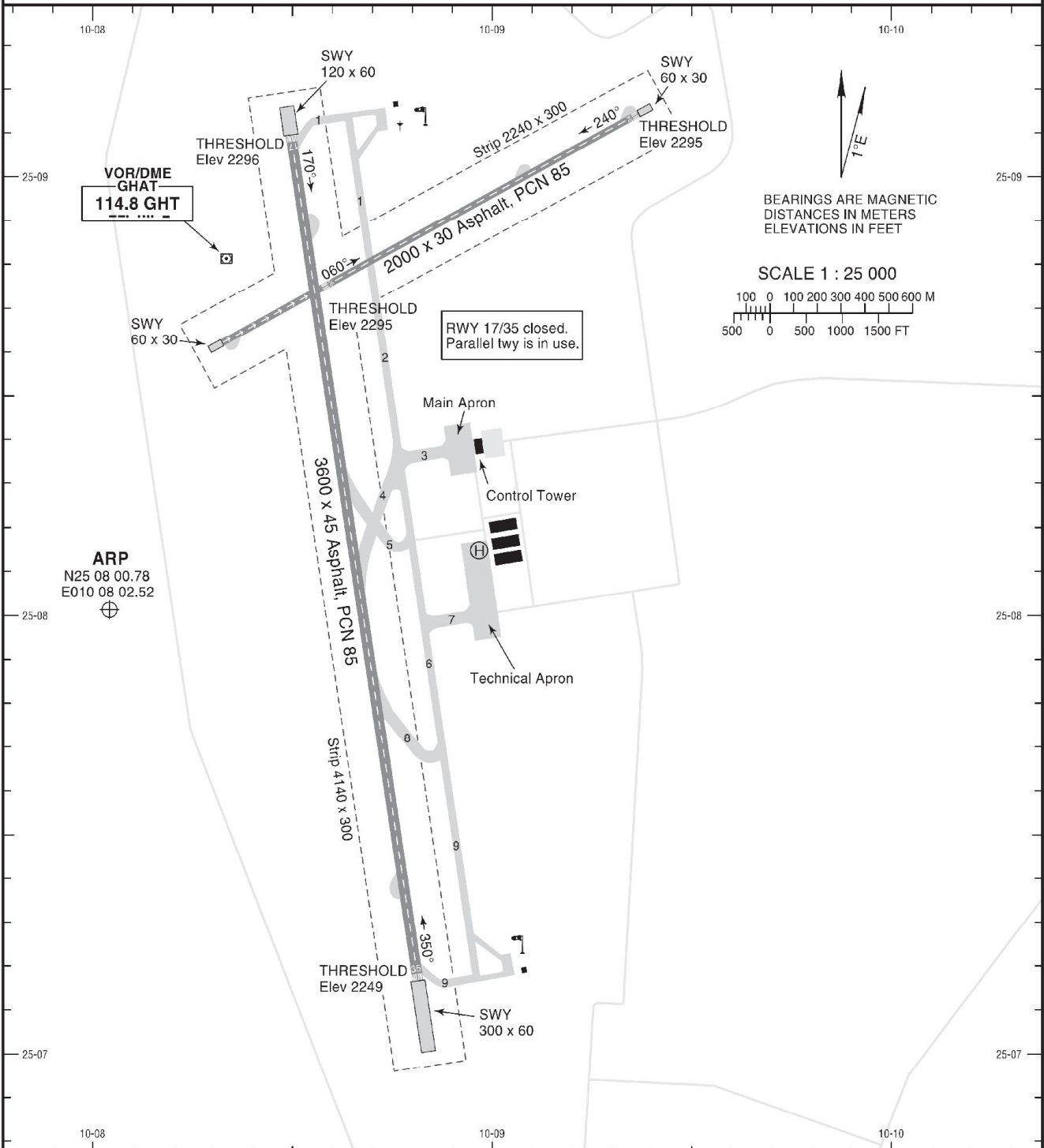
AERODROME
CHART - ICAO

WGS-84

AD ELEV 2296 FT

TWR 118.150
GND 121.900

GHAT, LIBYA
Ghat



RWY	DIRECTION	THRESHOLD	DECLARED DISTANCES				AERODROME LIGHTING
			TORA	TODA	ASDA	LDA	
06	060° MAG	N 25 08 45.15 E 010 08 35.08	2000	2000	2060	1500	Rwy 06/24: Nil Rwy 17/35: ALS LIH VASI (3 bar) REDL RENL RTHL STWL
24	240° MAG	N 25 09 08.64 E 010 09 22.02	2000	2000	2060	2000	
17	170° MAG	N 25 09 05.70 E 010 08 29.76	3600	3600	3900	3600	
35	350° MAG	N 25 07 09.96 E 010 08 48.84	3600	3600	3720	3600	

AMENDMENT: New edition.

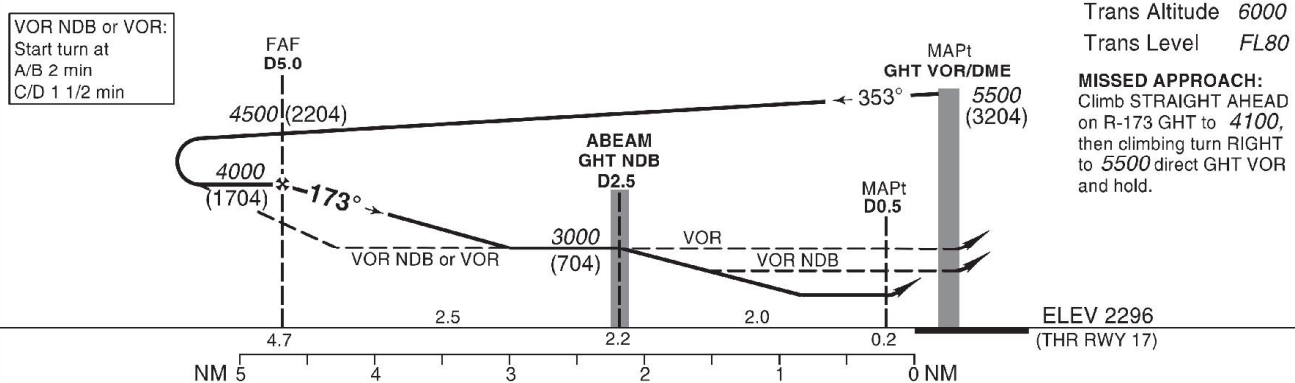
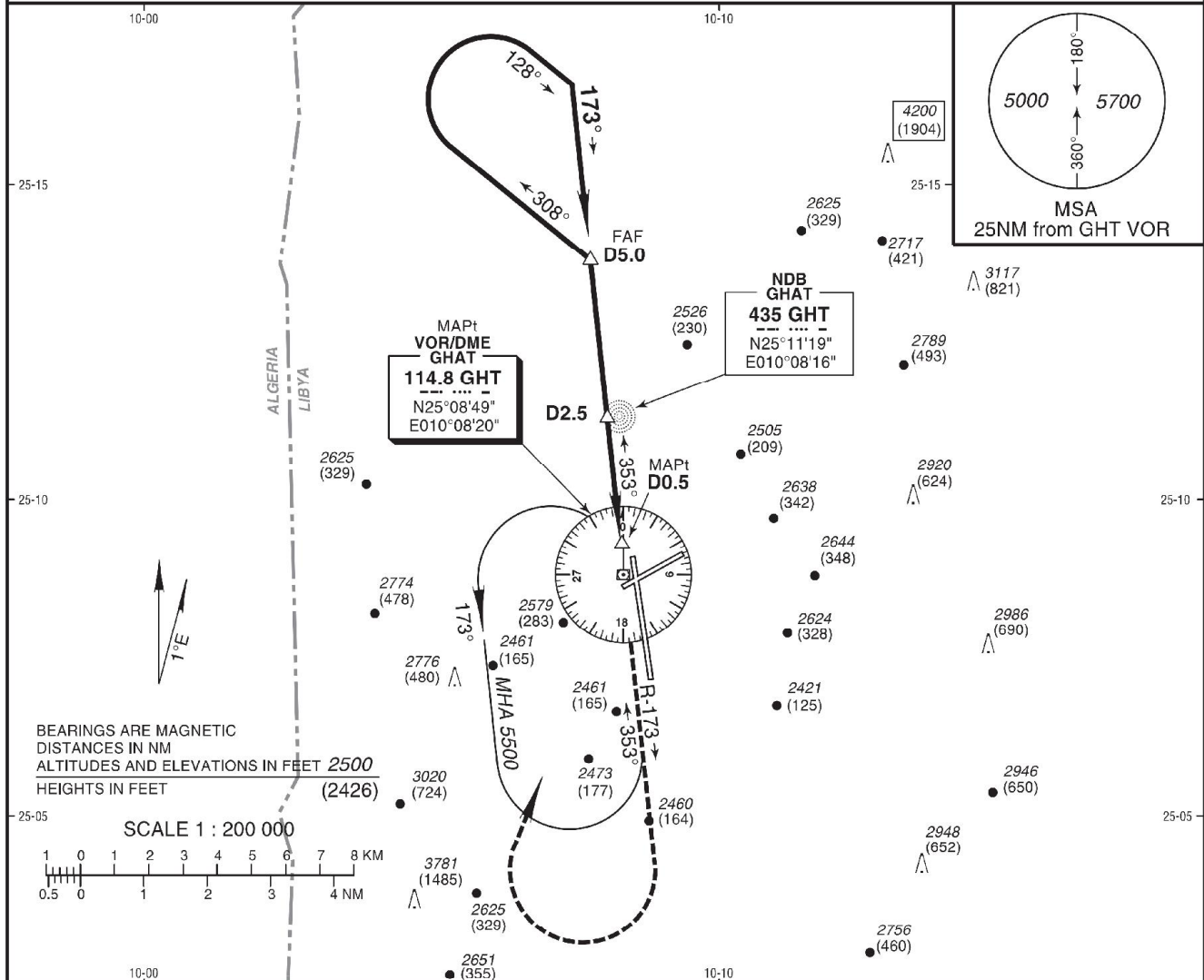
**INTENTIONALLY
BLANK**

INSTRUMENT
APPROACH
CHART - ICAO

AD ELEV 2296 FT
HEIGHTS RELATED TO
THR RWY 17 ELEV 2296 FT

APP 118.100
TWR 118.150
GND 121.900

GHAT, LIBYA
Ghat
VOR DME RWY 17



STRAIGHT-IN APPROACH		A	B	C	D
VOR DME	MDA(H)	2800 (504)			
	VIS	1200		1600	
	w/o lights	1600		2000	
VOR NDB	MDA(H)	2900 (604)			
	VIS	1600		2000	
	w/o lights	2000		2400	
VOR	MDA(H)	3000 (704)			
	VIS	2000		2400	
	w/o lights	2400		2800	
CIRCLING (HAA)*		A	B	C	D
MDA(H)		3400 (1104)			
VIS		1900	2800	3700	4600

* Not authorized East of Airport and at night.
1. Procedure restricted to MAX 210 KT.
2. Avoid overflying international borders West of Airport.

AMENDMENT: New edition.

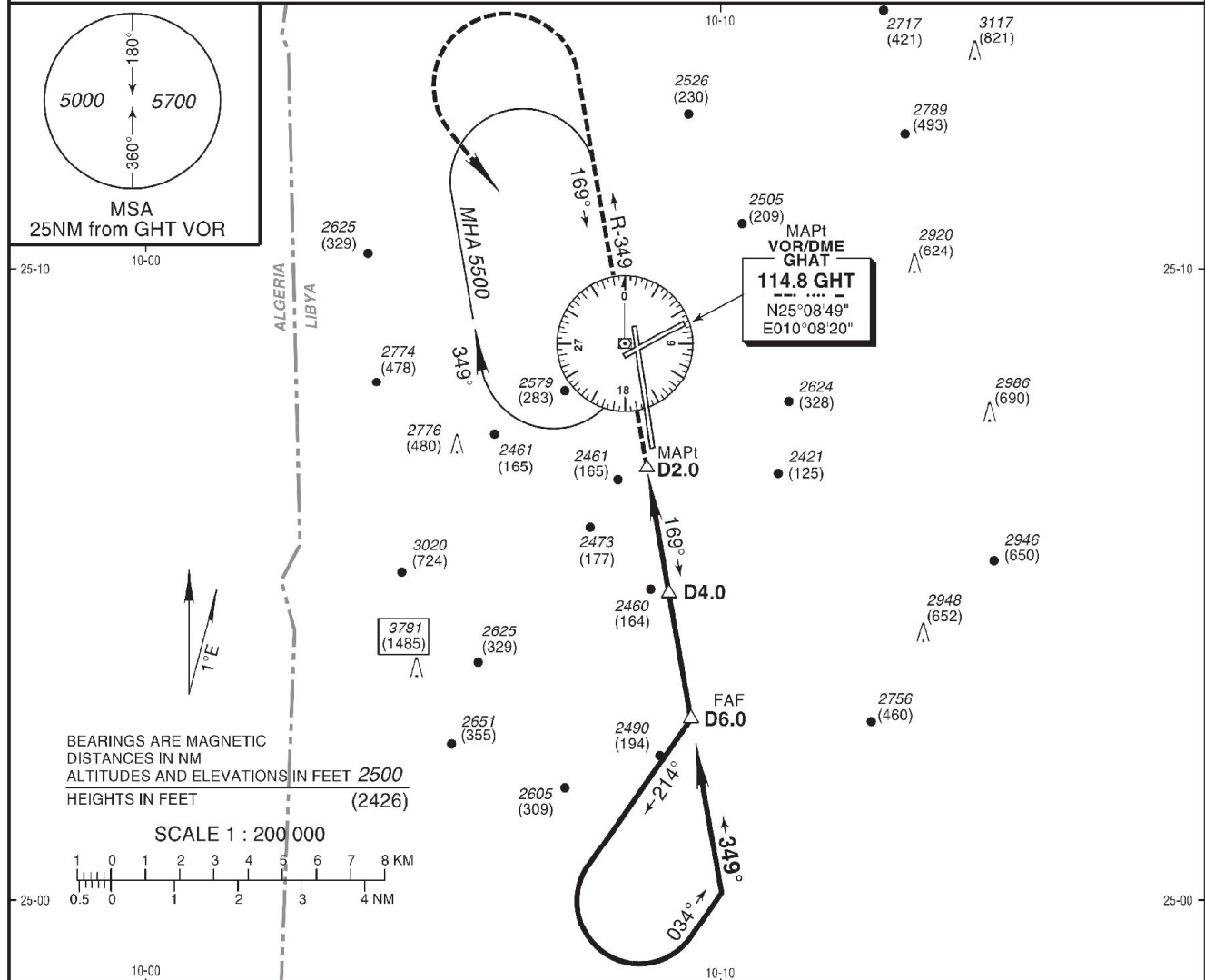
**INTENTIONALLY
BLANK**

INSTRUMENT
APPROACH
CHART - ICAO

AD ELEV 2296 FT
HEIGHTS RELATED TO
THR RWY 35 ELEV 2249 FT

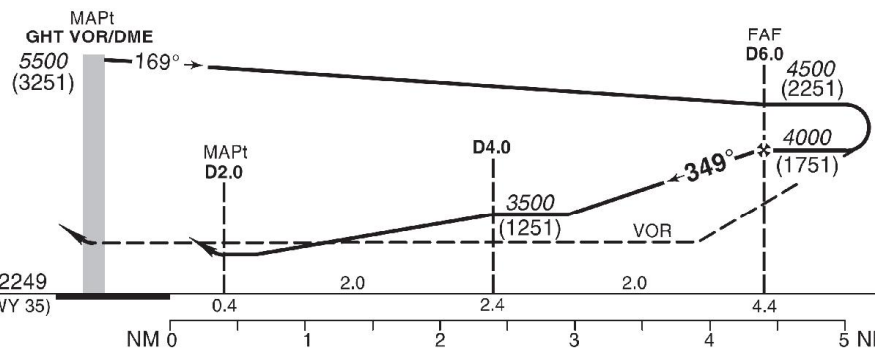
APP 118.100
TWR 118.150
GND 121.900

GHAT, LIBYA
Ghat
VOR DME RWY 35



Trans Altitude 6000
Trans Level FL80

MISSED APPROACH:
Climb STRAIGHT AHEAD
on R-349 GHT to 4100,
then climbing turn LEFT
to 5500 direct GHT VOR
and hold.



VOR:
Start turn at
A/B 2 1/2min
C/D 2 min

STRAIGHT-IN APPROACH		A	B	C	D
VOR DME	MDA(H)	2750 (501)			
	VIS	1200		1600	
	w/o lights	1600		2000	
VOR	MDA(H)	3000 (751)			
	VIS	1600		2000	
	w/o lights	2000		2400	
CIRCLING (HAA)*		A	B	C	D
	MDA(H)	3400 (1104)			
	VIS	1900	2800	3700	4600

1. Procedure restricted to MAX 210 KT.
2. Avoid overflying international borders West of Airport.

* Not authorized East of Airport and at night.

AMENDMENT: New edition.

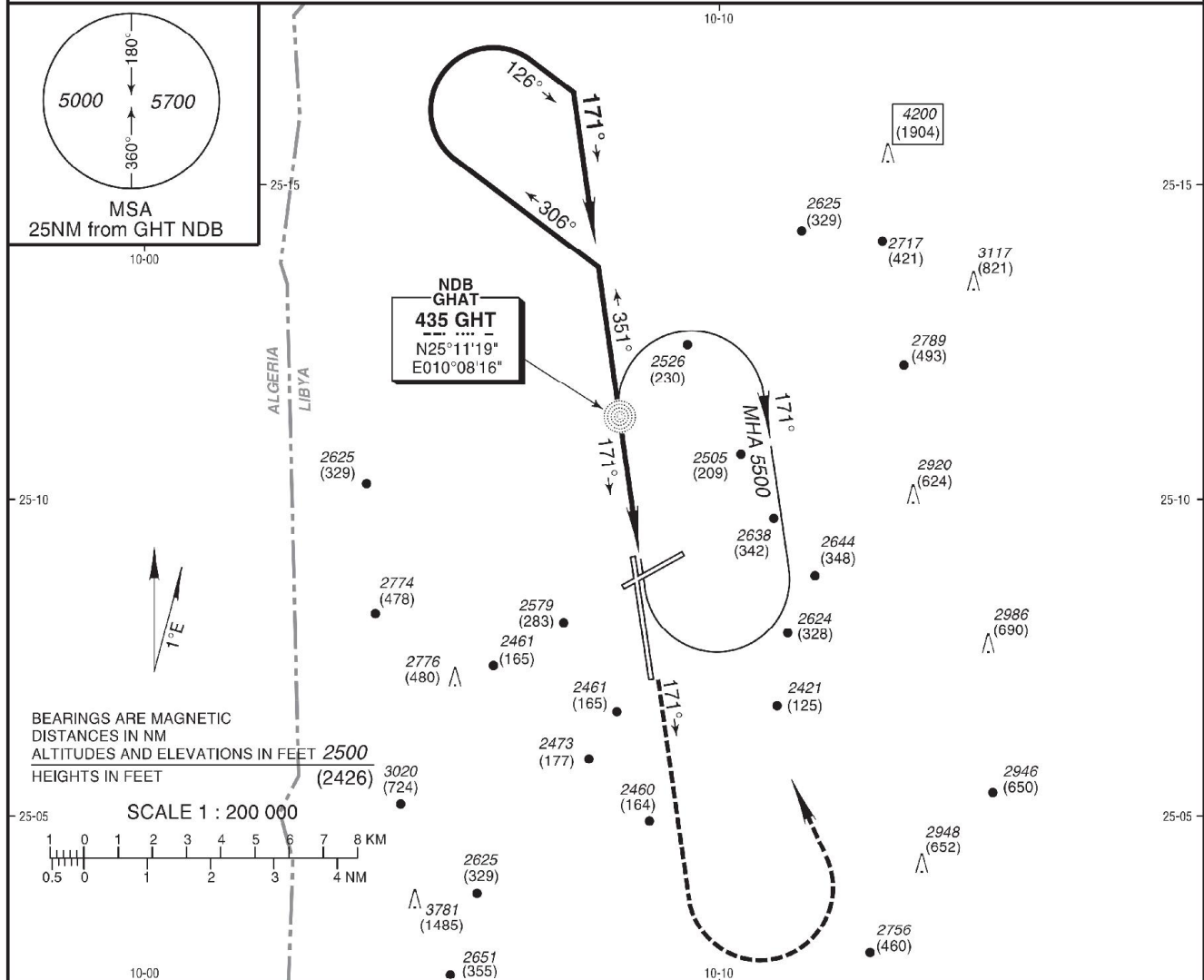
**INTENTIONALLY
BLANK**

INSTRUMENT
APPROACH
CHART - ICAO

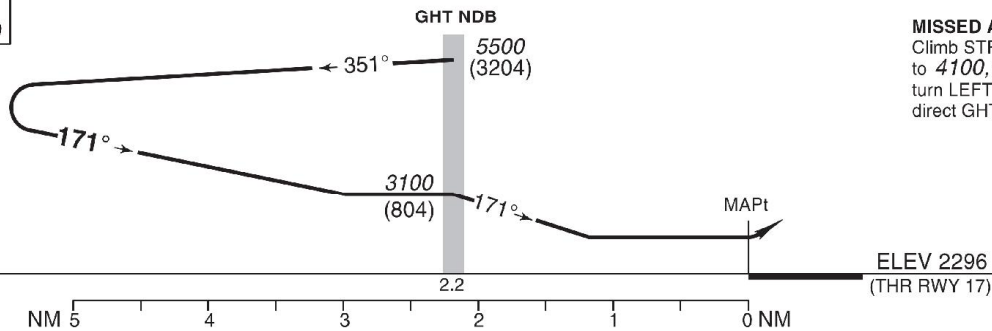
AD ELEV 2296 FT
HEIGHTS RELATED TO
THR RWY 17 ELEV 2296 FT

APP 118.100
TWR 118.150
GND 121.900

GHAT, LIBYA
Ghat
NDB RWY 17



Start turn
at 1 min
4500 to 4000



Trans Altitude 6000
Trans Level FL80

MISSED APPROACH:
Climb STRAIGHT AHEAD
to 4100, then climbing
turn LEFT to 5500
direct GHT NDB and hold.

STRAIGHT-IN APPROACH		A	B	C	D
NDB	MDA(H)	2930 (634)			
CIRCLING (HAA)*		A	B	C	D
	MDA(H)	3400 (1104)			
	VIS	1900	2800	3700	4600

ADVISORY INFORMATION ONLY					
NDB to MAPt 2.16NM					
kt	90	120	150	180	210
min:sec	1:28	1:06	0:53	0:44	0:38

* Not authorized East of Airport and at night.
1. Avoid overflying international borders West of Airport.

AMENDMENT: New edition.

**INTENTIONALLY
BLANK**